

Important Information

Dell Precision Workstation M6600

About Warnings

 **WARNING:** A WARNING indicates a potential for property damage, personal injury, or death.

Pen

The pen or stylus is an input device that uses a specifically designed electrostatic pen for use in the capacitive touchscreen LCD.

 **NOTE:** There is no pen/stylus doghouse (stylus bay) integrated into the computer's chassis.

The Stylus kit consists of:

1. pen/stylus
2. AAA battery
3. additional stylus tip
4. stylus tether



The pen does not rely on the battery power. It depends on the magnetic energy produced by the excitation coil built into the digitizer. The signal from the coil is picked up by the stylus and triggers the stylus to transmit an electric field. The transmitted electric field is sensed by a matrix of conductive lines on the slate. The accurate stylus position is determined using the low amplitude signals received on the vertical and horizontal conductors. Thus, an appropriate signal is transferred to the digitizer's on-board processor.


The stylus is designed to support multiple pen tip types to provide you with a choice in tip/screen interaction when writing. Two basic nibs will include a hard plastic "standard" nib and a softer "felt" nib. The nibs are of different colors to help distinguish the two types. The pen nib can be removed without a tool.



1. pen
2. eraser pen button
3. left-click pen button
4. pen tip
5. removable cap to replace the battery

Table 1. Buttons on the Pen


Button	Function
eraser pen button	pressing this button will erase the text written in the application
left-click button	pressing this button will act like a left click on a mouse or pressing this button activate the field or option.

 **NOTE:** If there is a digitizer failure, the pen tip must be examined. If the tip is damaged, it must be replaced. Replacing the pen tip, resolves the problem with the digitizer.

 **WARNING:** The stylus is designed to work on specific Dell computers. Do not use the pen on any other models or on hard surfaces.

Removing/Inserting the Stylus Battery and Pen Tip

1. To remove/insert the battery, loosen the screw cap.

 **NOTE:** The battery with '+' sign must be inserted into the stylus first.

2. To remove the pen tip, hold the pen tip and remove it from the stylus.



3. Install a new pen tip on the stylus pen head.

Pen Usage

Your computer uses several input devices. The standard external USB keyboard and mouse are present, plus you can opt for the electrostatic pen/stylus or use your finger as an input device.

Using the Pen as a Mouse

You can use the pen the same way you use a mouse or touch pad with a notebook computer. Holding the pen near the display makes a small cursor appear. Moving the pen moves the cursor. The following table describes how to use the pen.

Table 2. Electrostatic Pen Usage

Action	Function
Gently tap the pen tip on the screen	Same as a single-click on a mouse.
Gently tap the pen tip twice in quick succession on the screen.	Same as a double-click on a mouse.
Touch the pen on the screen and hold it in place momentarily until Windows draws a complete circle around the cursor.	Same as a right-click on a mouse.

Using the Pen as a Pen

The handwriting recognition software makes it easy to enter text into your applications with the pen. Some applications, such as Windows Journal, allow you to write with the pen directly into the application window.

Tablet PC Input Panel

When an application does not directly support pen input, you can use the **Tablet PC Input Panel** to enter text into your application. If you tap in an editable area, the Tablet PC Input Panel icon appears. Tapping the icon makes the Input Panel slide out from the edge of the display.

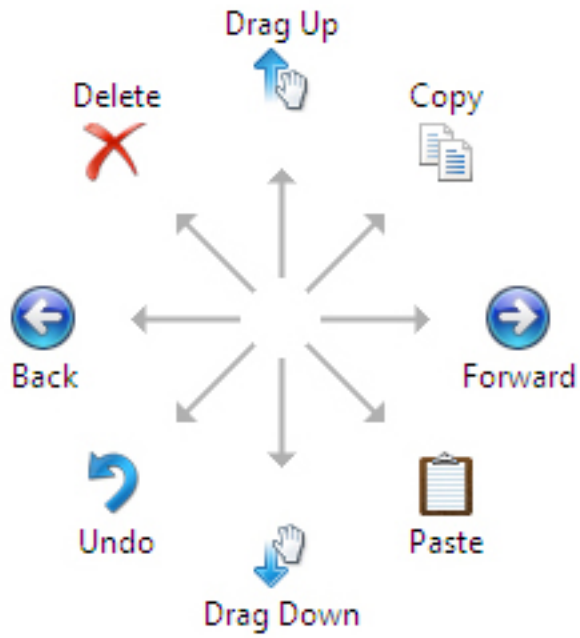


You can move the **Input Panel** tab by dragging it up or down along the edge of the screen. Then, when you tap it, the Input Panel opens at the same horizontal location on the screen that the tab appears.



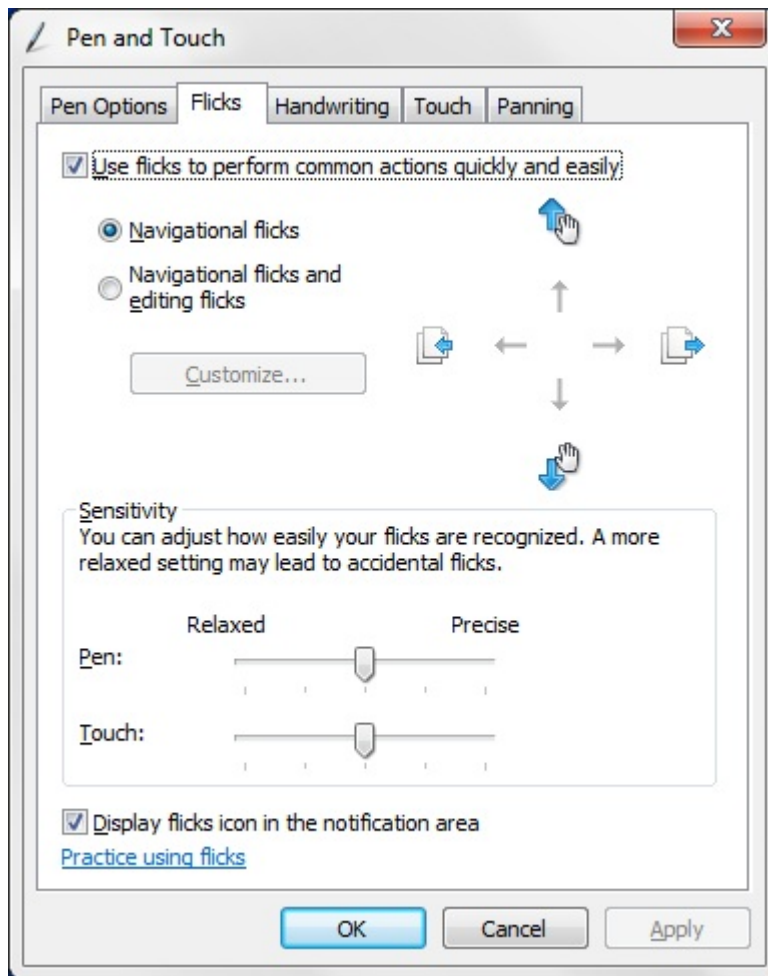
Pen Flicks

Pen flicks enable you to use the pen to perform actions that normally require a keyboard, such as pressing <Page Up> or using the directional arrow keys. Pen flicks are quick, directional gestures. Draw a short line in one of eight directions. When a pen flick is recognized, the Tablet PC performs the action assigned.



You can modify the default pen flick settings:

1. Click **Start** → **Control Panel** → **Pen and Touch** and click the **Flicks** tab.
2. Modify the settings and click **OK**.



Calibrating the Pen

The pen can function at the default calibration or at a calibration set by you or by another user. It is recommended that you use the pen only while it is calibrated to your personal calibration settings. Calibration optimizes pen performance for each user.

1. Click **Start** → **Control Panel**.
2. Double-click **Tablet PC Settings**.
3. On the **Tablet PC Settings** window, click **Calibrate**.
4. On the calibrate pen or touch input screens, select **Pen input**.
5. Follow the instructions on the screen. The calibration markers are displayed on the screen as a plus sign (+). Tap the pen in the exact center of each of the calibration markers.

Troubleshooting Your Pen

The stylus is the first component to be investigated in the event of a suspected problem with the digitizer.

Ensure that you perform the following steps:

1. Verify the pen tip is in good shape (free of chips, excessive wear, etc.).
2. Replace the pen tip with a new one or the one that is in good condition.
3. Verify that the touch capabilities are not affected.
4. Switch to touch mode and see if the problem still exists.
5. If no symptoms persist in touch mode, the pen tip is the most likely suspect.
6. If the problem does persist in touch mode, run diagnostics and take the necessary steps depending on the results.

© 2012 Dell Inc.

Trademarks used in this text: Dell™, the DELL logo, Dell Precision™, Precision ON™, ExpressCharge™, Latitude™, Latitude ON™, OptiPlex™, Vostro™, and Wi-Fi Catcher™ are trademarks of Dell Inc. Intel®, Pentium®, Xeon®, Core™, Atom™, Centrino®, and Celeron® are registered trademarks or trademarks of Intel Corporation in the U.S. and other countries. AMD® is a registered trademark and AMD Opteron™, AMD Phenom™, AMD Sempron™, AMD Athlon™, ATI Radeon™, and ATI FirePro™ are trademarks of Advanced Micro Devices, Inc. Microsoft®, Windows®, MS-DOS®, Windows Vista®, the Windows Vista start button, and Office Outlook® are either trademarks or registered trademarks of Microsoft Corporation in the United States and/or other countries. Blu-ray Disc™ is a trademark owned by the Blu-ray Disc Association (BDA) and licensed for use on discs and players. The Bluetooth® word mark is a registered trademark and owned by the Bluetooth® SIG, Inc. and any use of such mark by Dell Inc. is under license. Wi-Fi® is a registered trademark of Wireless Ethernet Compatibility Alliance, Inc.