

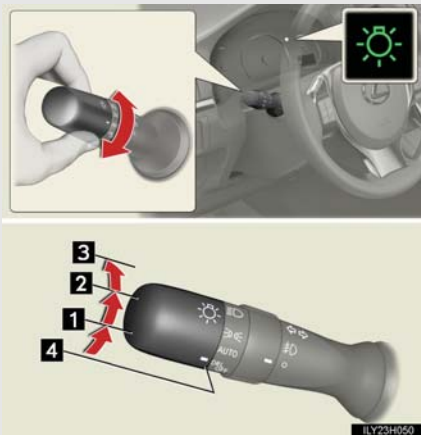
2-3. Operating the lights and windshield wipers

Headlight switch


The headlights can be operated manually or automatically.


Turning the end of the lever turns on the lights as follows:

Type A



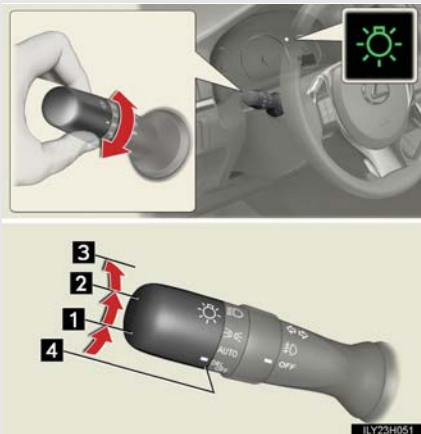
1 **AUTO** The headlights and side marker, parking lights, daytime running lights and so on turn on and off automatically (when the "POWER" switch is in ON mode).

2  The side marker, parking, tail, license plate, daytime running lights and instrument panel lights turn on.

3  The headlights and all the lights listed above (except daytime running lights) turn on.

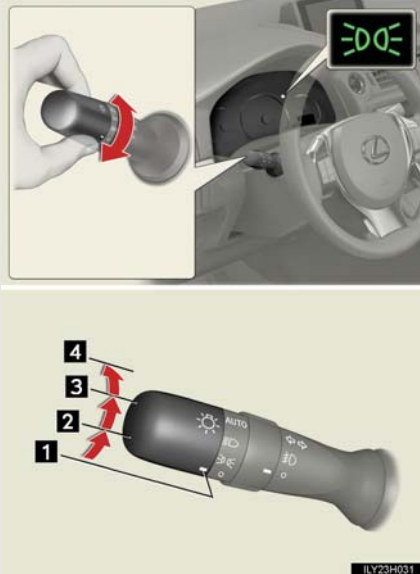
4 **DRL OFF** The daytime running lights turn off




Type B



2-3. Operating the lights and windshield wipers

Type C



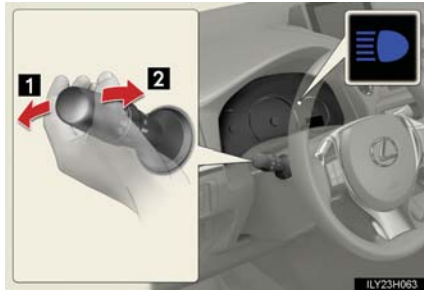
- 1  The daytime running lights turn on.
- 2  The side marker, parking, tail, license plate, daytime running lights and instrument panel lights turn on.
- 3  The headlights and all the lights listed above (except daytime running lights) turn on.
- 4 **AUTO** The headlights and side marker, parking lights, daytime running lights and so on turn on and off automatically (when the "POWER" switch is in ON mode).

2

When driving

2-3. Operating the lights and windshield wipers

Turning on the high beam headlights



- 1 With the headlights on, push the lever away from you to turn on the high beams.

Pull the lever toward you to the center position to turn the high beams off.

- 2 Pull the lever toward you and release it to flash the high beams once.

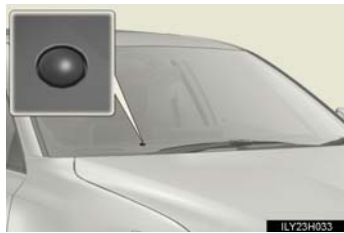
You can flash the high beams with the headlights on or off.

2-3. Operating the lights and windshield wipers

■ Daytime running light system

- To make your vehicle more visible to other drivers, the parking lights turn on automatically (at an increased intensity) whenever the hybrid system is started and the parking brake is released. Daytime running lights are not designed for use at night.
For the U.S.A.: Daytime running lights can be turned off by operating the headlight switch to DRL OFF position.
- Compared to turning on the headlights, the daytime running light system offers greater durability and consumes less electricity, so it can help improve fuel economy.


■ Headlight control sensor



The sensor may not function properly if an object is placed on the sensor, or anything that blocks the sensor is affixed to the windshield.

Doing so interferes with the sensor detecting the level of ambient light and may cause the automatic headlight system to malfunction.

■ Automatic light off system

- When the headlights come on: The headlights and tail lights turn off 30 seconds after a door is opened and closed if the "POWER" switch is turned to ACCESSORY mode or turned off. (The lights turn off immediately if  on the key is pressed after all the doors are locked.)
- When only the tail lights come on: The tail lights turn off automatically if the "POWER" switch is turned to ACCESSORY mode or turned off and the driver's door is opened.

To turn the lights on again, turn the "POWER" switch to ON mode, or turn the light switch off once and then back to  or .

2

When driving

2-3. Operating the lights and windshield wipers

■ Automatic headlight leveling system (if equipped)

The level of the headlights is automatically adjusted according to the number of passengers and the loading condition of the vehicle to ensure that the headlights do not interfere with other road users.

■ Customization

Settings (e.g. light sensor sensitivity) can be changed.
(Customizable features →P. 709)

NOTICE

■ To prevent 12-volt battery discharge

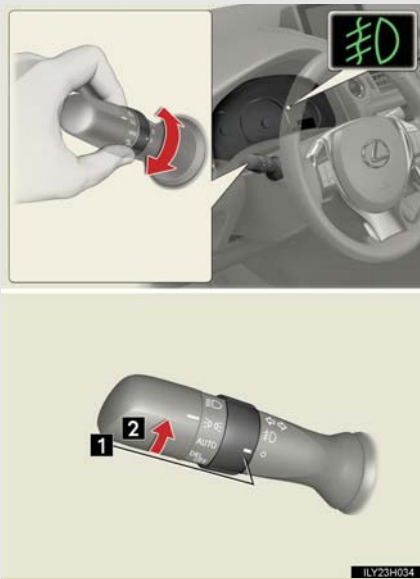
Do not leave the lights on longer than necessary when the hybrid system is off.

2-3. Operating the lights and windshield wipers

Fog light switch*

The fog lights secure excellent visibility in difficult driving conditions, such as in rain and fog.

Type A



- 1 Turns the fog lights off
- 2 Turns the fog lights on

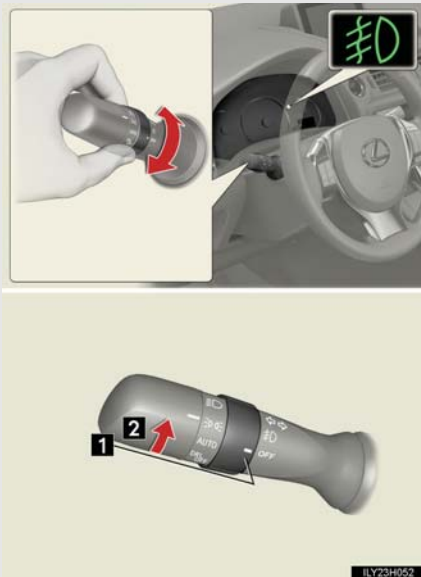
2

When driving

*: If equipped

2-3. Operating the lights and windshield wipers

Type B



- 1 **OFF** Turns the fog lights off
- 2 **ON** Turns the fog lights on

- **Fog lights can be used when**
The headlights are on in low beam.

NOTICE

- **To prevent 12-volt battery discharge**
Do not leave the lights on longer than necessary when the hybrid system is off.

2-3. Operating the lights and windshield wipers

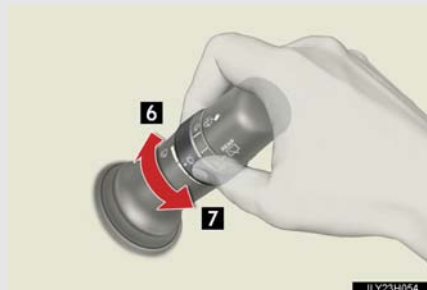
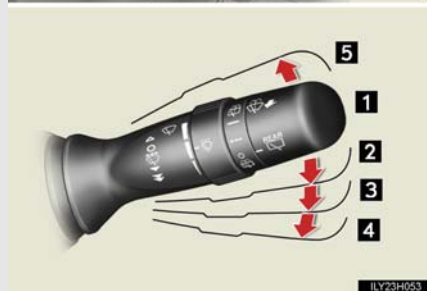
Windshield wipers and washer

Intermittent windshield wipers with interval adjuster (if equipped)

The wiper operation is selected by moving the lever as follows.

When intermittent windshield wiper operation is selected, wiper intervals can be also adjusted.

Type A

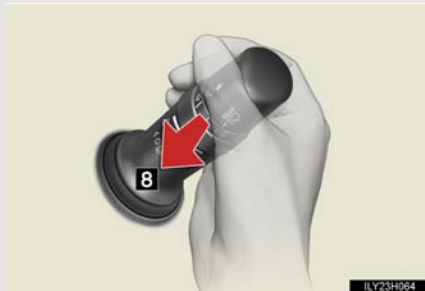


- 1 OFF
- 2 Intermittent windshield wiper operation
- 3 Low speed windshield wiper operation
- 4 High speed windshield wiper operation
- 5 Temporary operation
- 6 Increases the intermittent windshield wiper frequency
- 7 Decreases the intermittent windshield wiper frequency

2

When driving

2-3. Operating the lights and windshield wipers



8 Washer/wiper dual operation

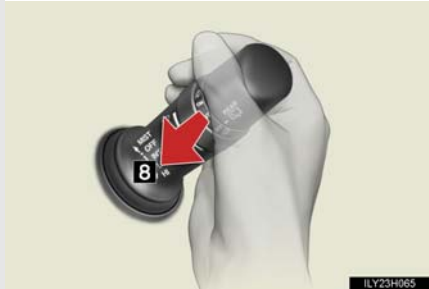
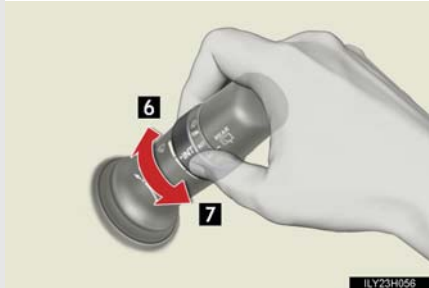
The wipers will automatically operate a couple of times after the washer squirts.

Type B



- 1 **OFF** OFF
- 2 **INT** Intermittent wind-
shield wiper operation
- 3 **LO** Low speed windshield
wiper operation
- 4 **HI** High speed wind-
shield wiper operation
- 5 **MIST** Temporary operation

2-3. Operating the lights and windshield wipers



6 Increases the intermittent windshield wiper frequency

7 Decreases the intermittent windshield wiper frequency

8 Washer/wiper dual operation
The wipers will automatically operate a couple of times after the washer squirts.

2

When driving

2-3. Operating the lights and windshield wipers

Rain-sensing windshield wipers (if equipped)

When "AUTO" is selected, the wipers will operate automatically when the sensor detects falling rain. The system automatically adjusts wiper timing in accordance with rain volume and vehicle speed.

When "AUTO" is selected, the sensor sensitivity can be adjusted as follows by turning the switch ring:

Type A



- 1 OFF
- 2 **AUTO** Rain-sensing wiper operation
- 3 Low speed wiper operation
- 4 High speed wiper operation
- 5 Temporary operation

2-3. Operating the lights and windshield wipers

- 6 Increases the sensitivity
- 7 Decreases the sensitivity

- 8 Washer/wiper dual operation
The wipers will automatically operate a couple of times after the washer squirts.

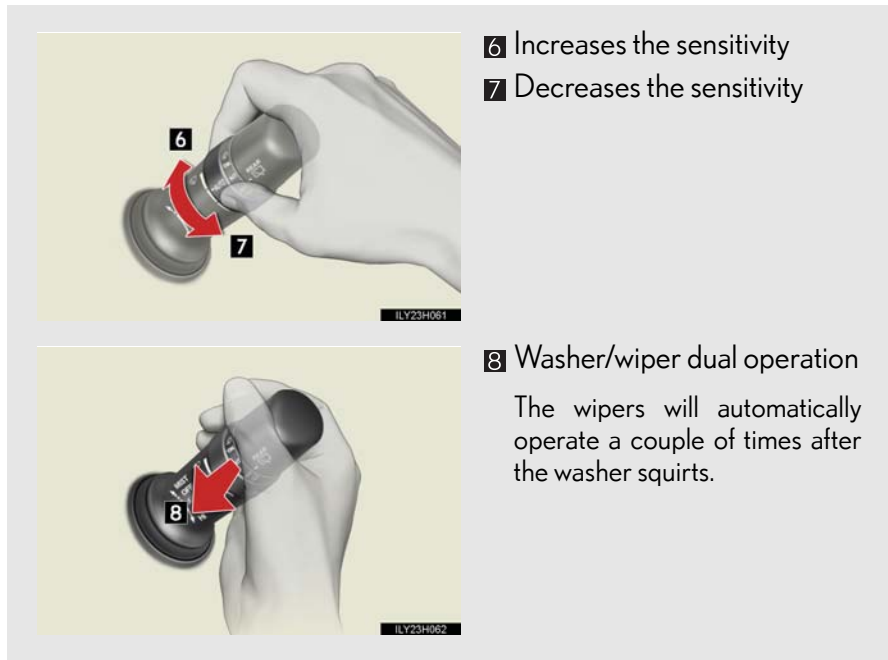
Type B

- 1 **OFF** OFF
- 2 **AUTO** Rain-sensing wiper operation
- 3 **LO** Low speed wiper operation
- 4 **HI** High speed wiper operation
- 5 **MIST** Temporary operation

2

When driving

2-3. Operating the lights and windshield wipers



-
- The windshield wipers and washer can be operated when
The "POWER" switch is in ON mode.

2-3. Operating the lights and windshield wipers

■ Raindrop sensor (vehicles with rain-sensing windshield wipers)



- The raindrop sensor judges the amount of raindrops.

An optical sensor is adopted. It may not operate properly when sunlight from the rising or setting of the sun intermittently strikes the windshield, or if bugs etc. are present on the windshield.

- If the wiper switch is turned to the "AUTO" position while the "POWER" switch is in ON mode, the wipers will operate once to show that AUTO mode is activated.
- If the temperature of the raindrop sensor is 194 °F (90 °C) or higher, or 5 °F (-15 °C) or lower, automatic operation may not occur. In this case, operate the wipers in any mode other than "AUTO".

■ If no windshield washer fluid sprays

Check that the washer nozzles are not blocked if there is washer fluid in the washer fluid tank.

⚠ CAUTION

■ Caution regarding the use of windshield wipers in "AUTO" mode (vehicles with rain-sensing windshield wipers)

The windshield wipers may operate unexpectedly if the sensor is touched or the windshield is subject to vibration in "AUTO" mode. Take care that your fingers etc. do not become caught in the windshield wipers.

2

When driving

2-3. Operating the lights and windshield wipers

NOTICE

■ **When the windshield is dry**

Do not use the wipers, as they may damage the windshield.

■ **When the washer fluid tank is empty**

Do not operate the switch continually as the washer fluid pump may overheat.

■ **When a nozzle becomes blocked**

In this case, contact your Lexus dealer.

Do not try to clear it with a pin or other object. The nozzle will be damaged.

■ **To prevent 12-volt battery discharge**

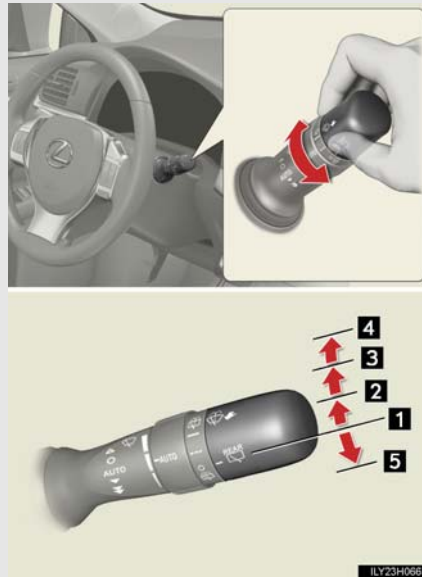
Do not leave the wipers on longer than necessary when the hybrid system is off.

2-3. Operating the lights and windshield wipers

Rear window wiper and washer*

The wiper operation is selected by moving the lever as follows:

Type A



- 1 OFF
- 2 Intermittent window wiper operation
- 3 Normal window wiper operation
- 4 Washer/wiper dual operation
- 5 Washer/wiper dual operation

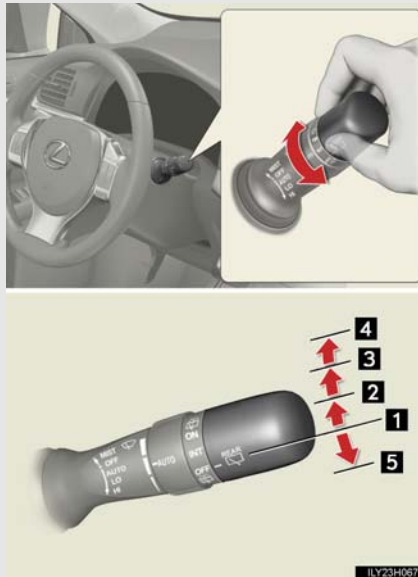
2



When driving

*: If equipped

2-3. Operating the lights and windshield wipers

Type B



- | | | |
|---|---|-------------------------------------|
| 1 | OFF | OFF |
| 2 | INT | Intermittent window wiper operation |
| 3 | ON | Normal window wiper operation |
| 4 |  | Washer/wiper dual operation |
| 5 |  | Washer/wiper dual operation |

- The rear window wiper and washer can be operated when the "POWER" switch is in ON mode.

NOTICE

- **When the rear window is dry**
Do not use the wiper, as it may damage the rear window.
- **When the washer fluid tank is empty**
Do not operate the switch continually as the washer fluid pump may overheat.

2-3. Operating the lights and windshield wipers

Headlight cleaner switch*

Washer fluid can be sprayed on the headlights.



Press the switch to clean the headlights.

2

When driving

■ The headlight cleaners can be operated when

The "POWER" switch is in ON mode and the headlight switch is turned on.

■ Windshield washer linked operation

Only for the first time when the windshield washer is operated with the "POWER" switch in ON mode and the headlights on, the headlight cleaners will operate once. (→P. 217)

⚠ NOTICE

■ When the washer fluid tank is empty

Do not press the switch continually as the washer fluid pump may overheat.

*: If equipped