

Power (Ignition) Switch

Performing the following operations when carrying the electronic key on your person starts the hybrid system or changes "POWER" switch modes.

Starting the hybrid system



1 Check that the parking brake is set.

2 Firmly depress the brake pedal.

Check that the "POWER" switch indicator turns green. If the indicator does not turn green, the hybrid system cannot be started.

When the shift position is N, the hybrid system cannot start. Shift the shift position to P, when starting the hybrid system. (→P.24)

3 Press the "POWER" switch.

Continue depressing the brake pedal until the hybrid system is completely started.

The hybrid system can be started from any "POWER" switch mode.

4 Check that the "READY" indicator is on.

If the "READY" indicator changes from a flashing light to a solid light and the buzzer sounds, the hybrid system is starting normally.

The vehicle will not move when the "READY" indicator is off.

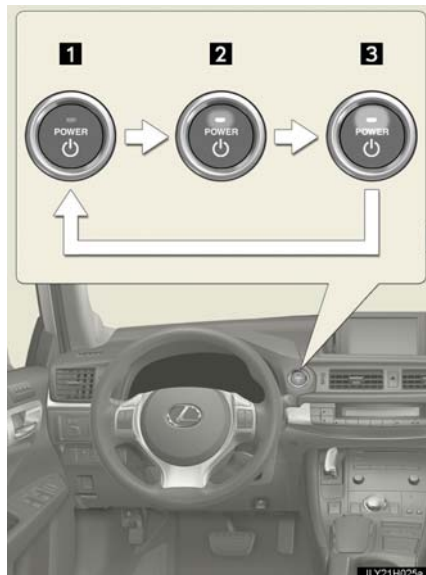
The vehicle can move when the "READY" indicator is on even if the engine is stopped. (The gasoline engine starts or stops automatically in accordance with the state of the vehicle.)

■ Stopping the hybrid system

- 1 Stop the vehicle completely.
- 2 Set the parking brake.
- 3 Shift the shift position to P.
Check that the shift position indicator shows P.
- 4 Press the "POWER" switch.
The hybrid system will stop, and the meter display will be extinguished (the shift position indicator will be extinguished a few seconds after the meter display).
- 5 Slowly release the brake pedal and check that the indicator on the "POWER" switch is off.

■ Changing "POWER" switch modes

Modes can be changed by pressing the "POWER" switch with the brake pedal released. (The mode changes each time the switch is pressed.)



- 1 Off
The emergency flashers can be used.
- 2 ACCESSORY mode
Some electrical components such as the audio system can be used.
The "POWER" switch indicator turns amber.
- 3 ON mode
All electrical components can be used.
The "POWER" switch indicator turns amber.

Hybrid Transmission

Shifting the shift lever



1 Shift lever

Operate the shift lever gently and ensure correct shifting operation.



When shifting to the D or R positions, move the shift lever along the shift gate.



To shift to the N position, slide the shift lever to the left and hold it. The shift position will change to N.



Shifting to B is only possible when shift position D is selected.



The shift lever will always return to this original position after a shifting operation. When shifting from P to N, D or R, from D to R, or from R to D, ensure that the brake pedal is being depressed and the vehicle is stationary.

2 Shift position indicator

The current shift position is illuminated.

When any shift position other than D or B is selected, the arrow toward B and B position indicator disappear from the shift position indicator.

When selecting the shift position, make sure that the shift position has been changed to the desired position by checking the shift position indicator provided on the instrument cluster.

■ Shift position purpose

Shift position	Function
P	Parking the vehicle/starting the hybrid system
R	Reversing
N	Neutral
D	Normal driving [*]
B	Applying engine braking or strong braking when the accelerator pedal has been released on steep downward slopes etc.

^{*}: For good fuel economy and noise reduction, the D position should usually be used.

■ P position switch

■ When shifting the shift position to P



Fully stop the vehicle and set the parking brake, and then press the P position switch.

When the shift position is changed to P, the switch indicator comes on.

Check that the P position is illuminated on the shift position indicator.

■ Shifting the shift position from P to other positions

- While depressing the brake pedal firmly, operate the shift lever. If the shift lever is operated without depressing the brake pedal, the buzzer will sound and the shifting operation will be disabled.
- When selecting the shift position, make sure that the shift position has been changed to the desired position by checking the shift position indicator provided on the instrument cluster.
- The shift position cannot be changed from P to B directly.

■ Selecting a driving mode

The following modes can be selected to suit driving conditions:



1 Normal mode

2 Eco drive mode

Suitable for improving the fuel economy, because the torque corresponding to the accelerator pedal depression amount can be generated more smoothly than it is in normal conditions and the operation of the air conditioning system (heating/cooling) will be minimized.

When the driving mode select switch is turned left, the “ECO MODE” indicator comes on in the instrument cluster.

Press the switch to change the driving mode to normal mode.

3 Sport mode

Use when high levels of response and feeling are desirable, such as when driving in mountainous regions or when overtaking.

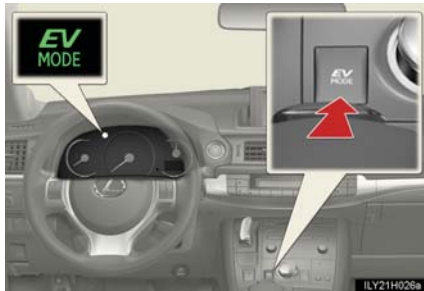
When the driving mode select switch is turned right, the “SPORT MODE” indicator comes on in the instrument cluster.

Press the switch to change the driving mode to normal mode.

■ EV drive mode

In EV drive mode, the electric motor (traction motor), powered by the hybrid battery (traction battery), is used to drive the vehicle.

This mode allows you to drive in residential areas late at night, or in indoor parking lots etc. without concern for noises and exhaust gas emissions.



Turns EV drive mode on/off

When EV drive mode is turned on, the EV drive mode indicator will come on. Pressing the switch when in EV drive mode will return the vehicle to normal driving (using the gasoline engine and electric motor [traction motor]).

■ Situations in which EV drive mode cannot be turned on

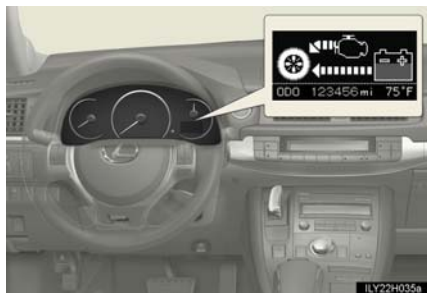
It may not be possible to turn EV drive mode on in the following situations. If it cannot be turned on, a buzzer will sound and a message will be shown on the multi-information display.

- The temperature of the hybrid system is high.
The vehicle has been left in the sun, driven on a hill, driven at high speeds, etc.
- The temperature of the hybrid system is low.
The vehicle has been left in temperatures lower than about 68°F (20°C) for a long period of time etc.
- The gasoline engine is warming up.
- The hybrid battery (traction battery) is low.
An "Energy Monitor" display of level 3 or lower may indicate a low battery level.
- Vehicle speed is high.
- The accelerator pedal is depressed firmly or the vehicle is on a hill etc.
- The windshield defogger is in use.

Multi-information Display

The multi-information display presents the driver with a variety of driving-related data including the warning messages.

■ Display contents



- Energy monitor
- Trip information
 - Current fuel consumption/Average fuel consumption after refueling
 - Average fuel consumption
 - Cruising range
 - Elapsed time
 - Average vehicle speed
- Instrument cluster setting
- Intuitive parking assist display (if equipped)
- Dynamic radar cruise control display (if equipped)
- Warning messages

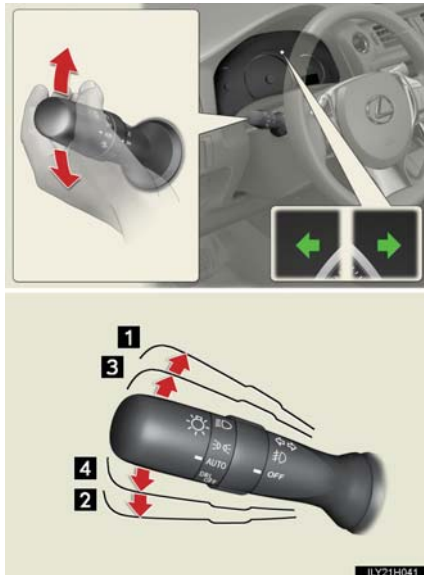
■ Switching the display



Items displayed can be switched by pressing the "DISP" switch.

- When using the intuitive parking assist or dynamic radar cruise control, the appropriate display is shown on the screen.
- If a problem is detected in any of the vehicle's systems, a warning message is shown on the multi-information display.

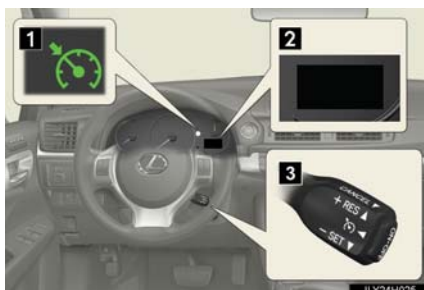
Turn Signal Lever



- 1 Right turn
- 2 Left turn
- 3 Lane change to the right (push and hold the lever partway)
The right hand signals will flash until you release the lever.
- 4 Lane change to the left (push and hold the lever partway)
The left hand signals will flash until you release the lever.

Cruise Control (if equipped)

Use the cruise control to maintain a set speed without depressing the accelerator pedal.



- 1 Indicators
- 2 Display
- 3 Cruise control switch

Setting the vehicle speed



- 1 Press the "ON-OFF" button to activate the cruise control.

Cruise control indicator will come on.
Press the button again to deactivate the cruise control.

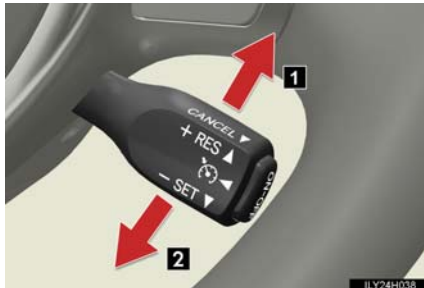


- 2 Accelerate or decelerate the vehicle to the desired speed, and push the lever down to set the speed.

"SET" will be displayed.
The vehicle speed at the moment the lever is released becomes the set speed.



■ Adjusting the set speed



- 1 Increases the speed
 - 2 Decreases the speed
- Fine adjustment: Momentarily move the lever in the desired direction.
- Large adjustment: Hold the lever in the desired direction.

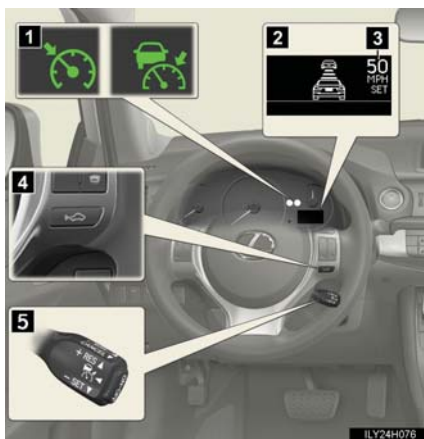
■ Canceling and resuming the constant speed control



- 1 Pulling the lever toward you cancels the constant speed control.
The speed setting is also canceled when the brakes are applied.
- 2 Pushing the lever up resumes the constant speed control.
Resuming is available when the vehicle speed is more than approximately 25 mph (40 km/h).

Dynamic Radar Cruise Control (if equipped)

Dynamic radar cruise control supplements conventional cruise control with a vehicle-to-vehicle distance control. In vehicle-to-vehicle distance control mode, the vehicle automatically accelerates or decelerates in order to maintain a set following distance from vehicles ahead.



- 1 Indicators
- 2 Display
- 3 Set speed
- 4 Vehicle-to-vehicle distance button
- 5 Cruise control switch

■ Setting the vehicle speed (vehicle-to-vehicle distance control mode)



- 1 Press the "ON-OFF" button to activate the cruise control.

Radar cruise control indicator will come on.

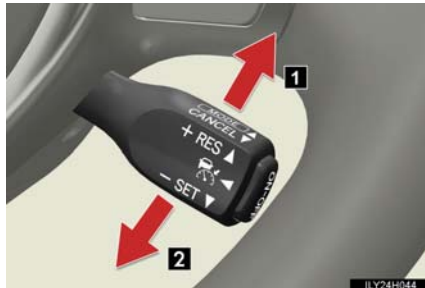
Press the button again to deactivate the cruise control.

- 2 Accelerate or decelerate the vehicle to the desired speed, and push the lever down to set the speed.

"SET" will be displayed.

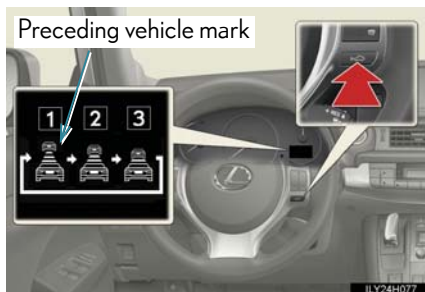
The vehicle speed at the moment the lever is released becomes the set speed.

■ Adjusting the set speed



- 1 Increases the speed
 - 2 Decreases the speed
- Fine adjustment: Momentarily move the lever in the desired direction.
Large adjustment: Hold the lever in the desired direction.

■ Changing the vehicle-to-vehicle distance



Pressing the button changes the vehicle-to-vehicle distance as follows:

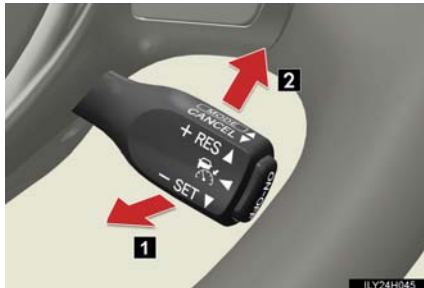
- 1 Long
- 2 Medium
- 3 Short

The vehicle-to-vehicle distance is set automatically to long mode when the "POWER" switch is turned to ON mode.

If a vehicle is running ahead of you, the preceding vehicle mark will be also displayed.

The vehicle-to-vehicle distance control mode maintains the preset cruising speed as long as no vehicle is detected ahead.

■ Canceling and resuming the constant speed control

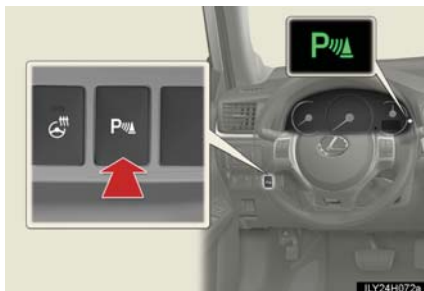


- 1** Pulling the lever toward you cancels the constant speed control.
The speed setting is also canceled when the brakes are applied.
- 2** Pushing the lever up resumes the constant speed control.
Resuming is available when the vehicle speed is more than approximately 25 mph (40 km/h).

■ Intuitive Parking Assist (if equipped)

The distance from your vehicle to nearby obstacles when parallel parking or maneuvering into a garage is measured by the sensors and communicated via the multi-information display, navigation system screen (if equipped) and a buzzer. Always check the surrounding area when using this system.

■ Turning the system on and off



Turns the intuitive parking assist on/off

When on, the buzzer sounds and the indicator light comes on to inform the driver that the system is operational.