

1-4. Adjustable components (seats, mirrors, steering wheel)

Front seats

Manual seat



- 1 Seat position adjustment lever
- 2 Seatback angle adjustment lever
- 3 Vertical height adjustment lever (for driver's side)

1

Before driving

1-4. Adjustable components (seats, mirrors, steering wheel)

Power seat (if equipped)



- 1 Seat position adjustment switch
- 2 Seat cushion (front) angle adjustment switch
- 3 Vertical height adjustment switch
- 4 Seatback angle adjustment switch
- 5 Lumbar support adjustment switch

1-4. Adjustable components (seats, mirrors, steering wheel)

CAUTION

n Seat adjustment

- I** To reduce the risk of sliding under the lap belt during a collision, do not recline the seat more than necessary.
If the seat is too reclined, the lap belt may slide past the hips and apply restraint forces directly to the abdomen, or your neck may contact the shoulder belt, increasing the risk of death or serious injury in the event of an accident.
Adjustments should not be made while driving as the seat may unexpectedly move and cause the driver to lose control of the vehicle.
- I** After adjusting the seat, make sure that the seat is locked in position. (manual seat)

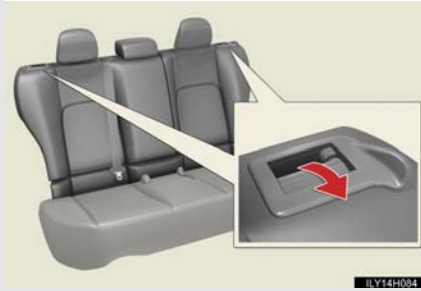
1

Before driving

1-4. Adjustable components (seats, mirrors, steering wheel)

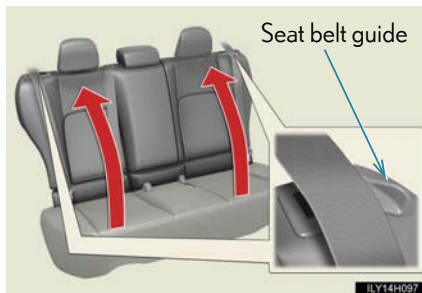
Rear seats

The seatbacks of the rear seats can be folded down.



Pull up the seatback lock release lever until the lock is released.

Returning the seatbacks



To avoid trapping the seat belt between the seat and the inside of the vehicle, pass the seat belt inside the seat belt guide and then return the seatback securely to the locked position.

1-4. Adjustable components (seats, mirrors, steering wheel)

CAUTION

n When folding the rear seatbacks down

Observe the following precautions. Failure to do so may result in death or serious injury.

- I** Do not fold the seatbacks down while driving.
- I** Stop the vehicle on level ground, set the parking brake and shift the shift position to P.
- I** Do not allow anyone to sit on a folded seatback or in the luggage compartment while driving.
- I** Do not allow children to enter the luggage compartment.

n When returning the rear seatback to the upright position

Do not put your hand on the seat belt guide.

Doing so may cause you to trap your hand between the guide and the pillar, causing an injury.

n After returning the rear seatback to the upright position

Observe the following precautions. Failure to do so may result in death or serious injury.



- I** Make sure that the seatback is securely locked in position by lightly pushing it back and forth.

If the seatback is not securely locked, the red marking will be visible behind the seatback lock release lever. Make sure that the red marking is not visible.

- I** Check that the seat belts are not twisted or caught in the seatback.

1

Before driving

1-4. Adjustable components (seats, mirrors, steering wheel)

Driving position memory*

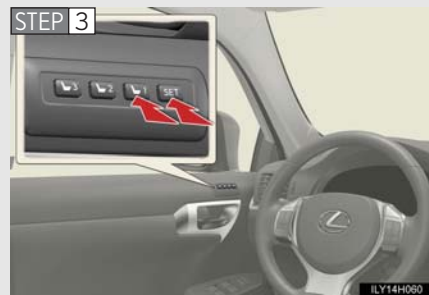
Your preferred driving position (the position of the driver's seat and outside rear view mirrors) can be memorized and recalled with the touch of a button. It is also possible to set this function to activate automatically when the doors are unlocked.

Three different driving positions can be entered into memory.

n Entering a position to memory

STEP 1 Turn the "POWER" switch to ON mode.

STEP 2 Adjust the driver's seat and outside rear view mirrors to the desired positions.

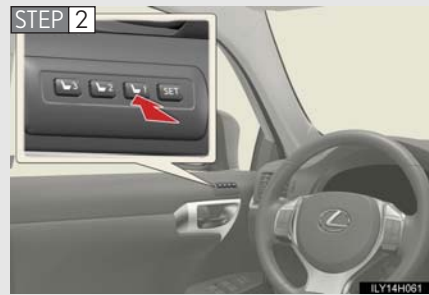


While pressing the "SET" button, or within 3 seconds after the "SET" button is pressed, press button 1, 2 or 3 until the signal beeps.

If the selected button has already been preset, the previously recorded position will be overwritten.

n Recalling the memorized position

STEP 1 Turn the "POWER" switch to ON mode.



Press button 1, 2 or 3 to recall the desired position.

*: If equipped

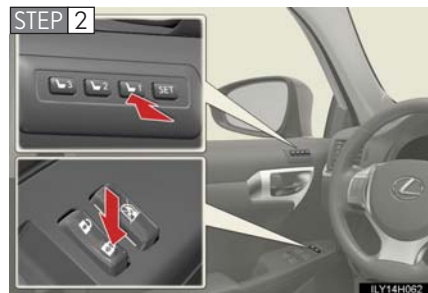
1-4. Adjustable components (seats, mirrors, steering wheel)

Linking driving position memory with door unlock operation (driver's seat only)

Record your driving position to button 1, 2 or 3 before performing the following:

Carry only the key (including the card key) to which you want to link the driving position. If 2 or more keys are in the vehicle, the driving position cannot be linked properly.

STEP 1 Close the driver's door and turn the "POWER" switch to OFF mode.



Press the desired button (1, 2 or 3) to recall the position. Then, while keep pressing the button, press the driver's door lock switches (either lock or unlock) until the signal beeps.

The driving position is recalled when the driver's door is unlocked using the entry function or wireless remote control and the driver's door is opened.

1

Before driving

1-4. Adjustable components (seats, mirrors, steering wheel)

n Operating the driving position memory after turning the “POWER” switch off

Memorized positions can be activated up to 180 seconds after the driver’s door is opened and another 60 seconds after it is closed again, even after turning the “POWER” switch off.

n Canceling the linked door unlock operation

STEP 1 Turn the “POWER” switch to ON mode and close the driver’s door.

STEP 2 While pressing the “SET” button, press the driver’s door lock switches (either lock or unlock) until the signal beeps.

n Stopping seat position operation part-way through

Perform any of the following operations:

- 1 Press the “SET” button.
- 1 Press button 1, 2 or 3.
- 1 Adjust the seat using the switches (only cancels seat position recall).

n Correct seat position

When the seat is in the most forward or most backward position, and the seat is being moved in those directions, the system may not correctly recognize the current position and the memorized position will not be correctly recalled.

! CAUTION

n Seat adjustment caution

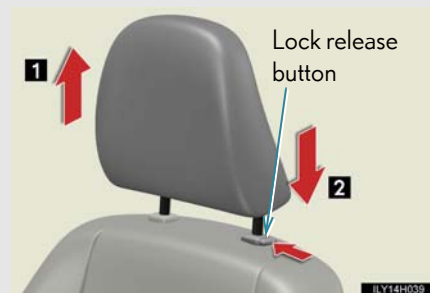
Take care during seat adjustment so that the seat does not strike the rear passenger or squeeze your body against the steering wheel.

1-4. Adjustable components (seats, mirrors, steering wheel)

Head restraints

Head restraints are provided for all seats.

Front seats



Vertical adjustment

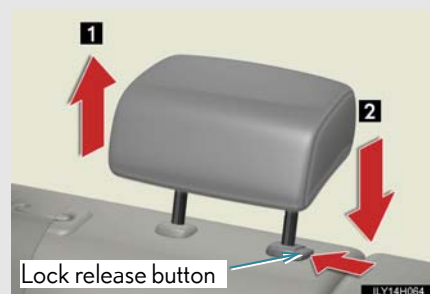
1 Up

Pull the head restraints up.

2 Down

Push the head restraint down while pushing the lock release button.

Rear center seat



Vertical adjustment

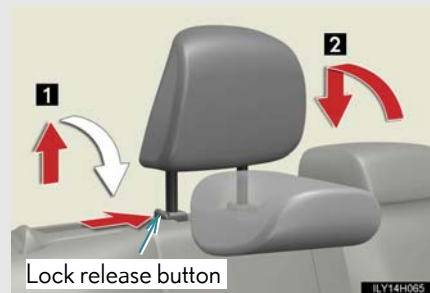
1 Up

Pull the head restraints up.

2 Down

Push the head restraint down while pushing the lock release button.

Rear outboard seats



1 To fold

Pull up the head restraint while pressing the lock release button.

2 To use

Lift up and push down the head restraint to the lowest lock position.

1

Before driving

1-4. Adjustable components (seats, mirrors, steering wheel)

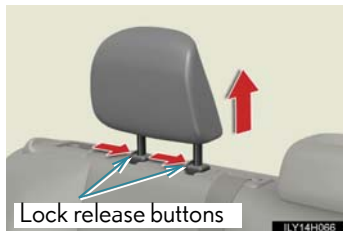
n Removing the head restraints

Front and rear center seats



Pull the head restraint up while pressing the lock release button.

Rear outboard seats



Pull the head restraint up while pressing the lock release buttons.

n Installing the head restraints

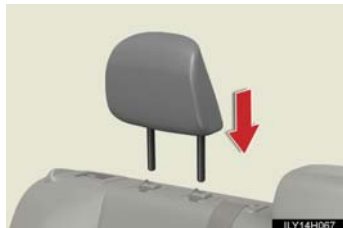
Front and rear center seats



Align the head restraint with the installation holes and push it down to the lock position.

Press and hold the lock release button when lowering the head restraint.

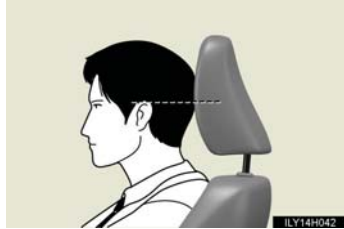
Rear outboard seats



Align the head restraint with the installation holes and push it down to the lowest lock position.

1-4. Adjustable components (seats, mirrors, steering wheel)

n Adjusting the height of the head restraints (front seats)



Make sure that the head restraints are adjusted so that the center of the head restraint is closest to the top of your ears.

1

Before driving

n Adjusting the rear center seat head restraint

Always raise the head restraint one level from the stowed position when using.

CAUTION

n Head restraint precautions

Observe the following precautions regarding the head restraints. Failure to do so may result in death or serious injury.

- 1 Use the head restraints designed for each respective seat.
- 1 Adjust the head restraints to the correct position at all times.
- 1 After adjusting the head restraints, push down on them and make sure they are locked in position.
- 1 Do not drive with the head restraints removed.

1-4. Adjustable components (seats, mirrors, steering wheel)

Seat belts

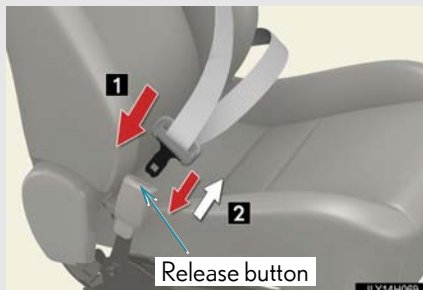
Make sure that all occupants are wearing their seat belts before driving the vehicle.

n Correct use of the seat belts



- 1 Extend the shoulder belt so that it comes fully over the shoulder, but does not come into contact with the neck or slide off the shoulder.
- 1 Position the lap belt as low as possible over the hips.
- 1 Adjust the position of the seatback. Sit up straight and well back in the seat.
- 1 Do not twist the seat belt.

n Fastening and releasing the seat belt



- 1** To fasten the seat belt, push the plate into the buckle until a click sound is heard.
- 2** To release the seat belt, press the release button.

1-4. Adjustable components (seats, mirrors, steering wheel)

n Adjusting the seat belt shoulder anchor height (front seats)



1 Push the seat belt shoulder anchor down while pressing the release button.

2 Push the seat belt shoulder anchor up.

Move the height adjuster up and down as needed until you hear a click.

1

Before driving

Seat belt pretensioners (front seats)



The pretensioner helps the seat belt to quickly restrain the occupant by retracting the seat belt when the vehicle is subjected to certain types of severe frontal collision.

The pretensioner may not activate in the event of a minor frontal impact, a side impact, a rear impact or a vehicle rollover.

1-4. Adjustable components (seats, mirrors, steering wheel)

Pre-collision seat belts (front seats of vehicles with pre-collision system)

If the pre-collision sensor detects that a collision is unavoidable, the pre-collision system will retract the seat belt, thus enhancing the effectiveness of the seat belt pretensioner in a crash.

The same will happen if the driver makes an emergency braking or loses control of the vehicle. (→P. 256)

After using the rear center seat belt



Store the buckle into the storage location in the seat cushion.

n Emergency locking retractor (ELR)

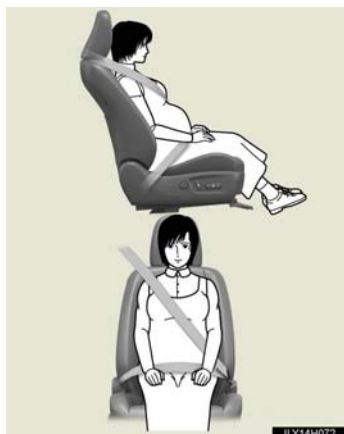
The retractor will lock the belt during a sudden stop or on impact. It may also lock if you lean forward too quickly. A slow, easy motion will allow the belt to extend so that you can move around fully.

n Automatic locking retractor (ALR)

When a passenger's shoulder belt is completely extended and then retracted even slightly, the belt is locked in that position and cannot be extended. This feature is used to hold the child restraint system (CRS) firmly. To free the belt again, fully retract the belt and then pull the belt out once more. (→P. 144)

1-4. Adjustable components (seats, mirrors, steering wheel)

n Pregnant women



Obtain medical advice and wear the seat belt in the proper way. (→P. 86)

Women who are pregnant should position the lap belt as low as possible over the hips in the same manner as other occupants. Extend the shoulder belt completely over the shoulder and position the belt across the chest. Avoid belt contact over the rounding of the abdominal area.

If the seat belt is not worn properly, not only the pregnant woman, but also the fetus could suffer death or serious injury as a result of sudden braking or a collision.

1

Before driving

n People suffering illness

Obtain medical advice and wear the seat belt in the proper way. (→P. 86)

n Child seat belt usage

The seat belts of your vehicle were principally designed for persons of adult size.

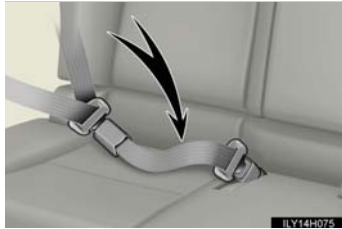
- 1 Use a child restraint system appropriate for the child, until the child becomes large enough to properly wear the vehicle's seat belt. (→P. 139)
- 1 When the child becomes large enough to properly wear the vehicle's seat belt, follow the instructions on P. 86 regarding seat belt usage.

n Replacing the belt after the pretensioner has been activated

If the vehicle is involved in multiple collisions, the pretensioner will activate for the first collision, but will not activate for the second or subsequent collisions.

1-4. Adjustable components (seats, mirrors, steering wheel)

n Seat belt extender



If your seat belts cannot be fastened securely because they are not long enough, a personalized seat belt extender is available from your Lexus dealer free of charge.

! CAUTION

Observe the following precautions to reduce the risk of injury in the event of sudden braking, sudden swerving or an accident.

Failing to do so may cause death or serious injury.

n Wearing a seat belt

- I** Ensure that all passengers wear a seat belt.
- I** Always wear a seat belt properly.
- I** Each seat belt should be used by one person only. Do not use a seat belt for more than one person at once, including children.
- I** Lexus recommends that children be seated in the rear seat and always use a seat belt and/or an appropriate child restraint system.
- I** To achieve a proper seating position, do not recline the seat more than necessary. The seat belt is most effective when the occupants are sitting up straight and well back in the seats.
- I** Do not wear the shoulder belt under your arm.
- I** Always wear your seat belt low and snug across your hips.

1-4. Adjustable components (seats, mirrors, steering wheel)

CAUTION

n Seat belt pretensioners

- I** Do not place anything, such as a cushion, on the front passenger's seat. Doing so will disperse the passenger's weight, which prevents the sensor from detecting the passenger's weight properly. As a result, the seat belt pretensioner for the front passenger's seat may not activate in the event of a collision.
- I** If the pretensioner has activated, the SRS warning light will come on. In that case, the seat belt cannot be used again and must be replaced at your Lexus dealer.

n Adjustable shoulder anchor

Always make sure the shoulder belt is positioned across the center of your shoulder. The belt should be kept away from your neck, but not falling off your shoulder. Failure to do so could reduce the amount of protection in an accident and cause death or serious injuries in the event of a sudden stop, sudden swerve or accident. (→P. 87)

n Child restraint lock function belt precaution

Do not allow children to play with the child restraint lock function belt. If the belt becomes twisted around a child's neck, it will not be possible to pull the belt out leading to choking or other serious injuries that could result in death. If this occurs and the buckle cannot be unfastened, scissors should be used to cut the belt.

1

Before driving

1-4. Adjustable components (seats, mirrors, steering wheel)

CAUTION

n Seat belt damage and wear

- I** Do not damage the seat belts by allowing the belt, plate, or buckle to be jammed in the door.
- I** Inspect the seat belt system periodically. Check for cuts, fraying, and loose parts. Do not use a damaged seat belt until it is replaced. Damaged seat belts cannot protect an occupant from death or serious injury.
- I** Ensure that the belt and plate are locked and the belt is not twisted. If the seat belt does not function correctly, immediately contact your Lexus dealer.
- I** Replace the seat assembly, including the belts, if your vehicle has been involved in a serious accident, even if there's no obvious damage.
- I** Do not attempt to install, remove, modify, disassemble or dispose of the seat belts. Have any necessary repairs carried out by your Lexus dealer. Inappropriate handling of the pretensioner may prevent it from operating properly, resulting in death or serious injury.

n Using a seat belt extender

- I** Do not wear the seat belt extender if you can fasten the seat belt without the extender.
- I** Do not use the seat belt extender when installing a child restraint system because the belt will not securely hold the child restraint system, increasing the risk of death or serious injury in the event of an accident.
- I** The personalized extender may not be safe on another vehicle, when used by another person, or at a different seating position other than the one originally intended.

1-4. Adjustable components (seats, mirrors, steering wheel)

NOTICE

n When using a seat belt extender

When releasing the seat belt, press on the buckle release button on the extender, not on the seat belt.

This helps prevent damage to the vehicle interior and the extender itself.

1

Before driving

1-4. Adjustable components (seats, mirrors, steering wheel)

Steering wheel

The steering wheel can be adjusted to a comfortable position.



Hold the steering wheel and push the lever down.



Adjust to the ideal position by moving the steering wheel horizontally and vertically.

After adjustment, pull the lever up to secure the steering wheel.

CAUTION

n While driving

Do not adjust the steering wheel while driving. Doing so may cause the driver to mishandle the vehicle and cause an accident, resulting in death or serious injury.

n After adjusting the steering wheel

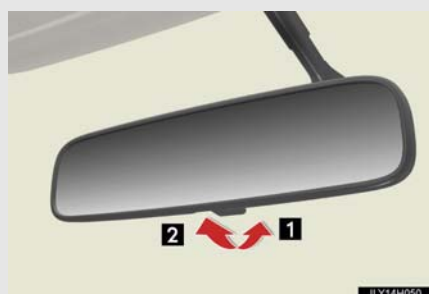
Make sure that the steering wheel is securely locked. Otherwise, the steering wheel may move suddenly, possibly causing an accident, and resulting in death or serious injury.

1-4. Adjustable components (seats, mirrors, steering wheel)

Inside rear view mirror

Glare from the headlights of vehicles behind can be reduced by using the following functions:

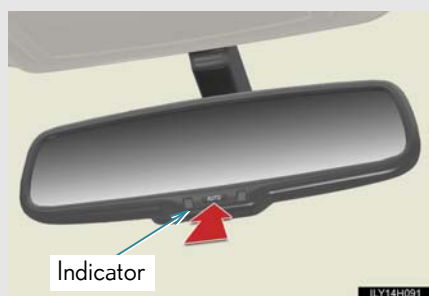
Manual anti-glare inside rear view mirror



- 1 Normal position
- 2 Anti-glare position

Auto anti-glare inside rear view mirror

In "AUTO" mode, sensors are used to detect the headlights of vehicles behind and the reflected light is automatically reduced.



Turns automatic mode on/ off

The indicator comes on when automatic mode is turned on.

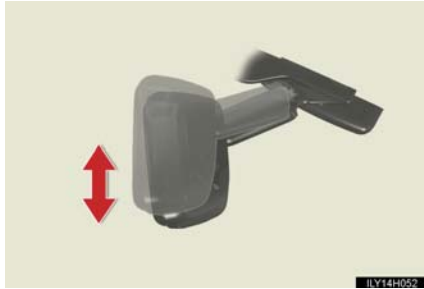
The mirror will revert to automatic mode each time the "POWER" switch is turned to ON mode.

1

Before driving

1-4. Adjustable components (seats, mirrors, steering wheel)

Adjusting the height of rear view mirror



Adjust the height of the rear view mirror by moving it up and down.

n To prevent sensor error (vehicles with auto anti-glare inside rear view mirror)



To ensure that the sensors operate properly, do not touch or cover them.

CAUTION

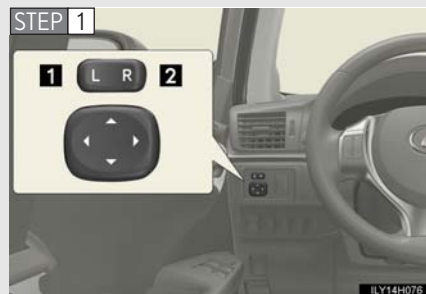
n While driving

Do not adjust the position of the mirror while driving.
Doing so may lead to mishandling of the vehicle and cause an accident, resulting in death or serious injury.

1-4. Adjustable components (seats, mirrors, steering wheel)

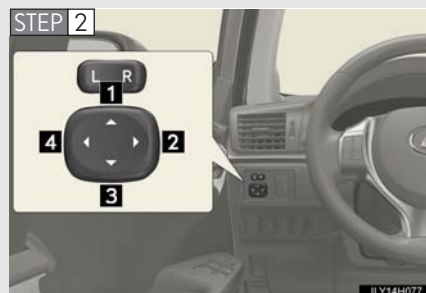
Outside rear view mirrors

Mirror angle can be adjusted using the switch.



To select a mirror to adjust, press the switch.

- 1 Left
- 2 Right

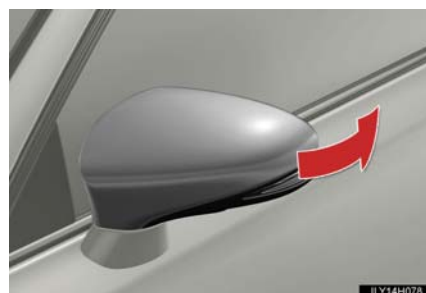


To adjust the mirror, press the switch.

- 1 Up
- 2 Right
- 3 Down
- 4 Left

1
Before driving

Folding the mirrors



Push the mirror back in the direction of the vehicle's rear.

1-4. Adjustable components (seats, mirrors, steering wheel)

n **Mirror angle can be adjusted when**

The "POWER" switch is in ACCESSORY or ON mode.

n **Linked mirror function when reversing (vehicles with driving position memory)**

The outside rear view mirrors will automatically angle downwards when the vehicle is reversing in order to give a better view of the ground. However, this function will not operate when the mirror select switch is in the neutral position (between "L" and "R").

n **When the mirrors are fogged up**

Turn on the mirror defoggers to defog the mirrors. (→P. 289)

n **Automatic adjustment of the mirror angle (vehicles with driving position memory)**

A desired mirror face angle can be entered to memory and recalled automatically by the driving position memory. (→P. 80)

n **Auto anti-glare function (if equipped)**

When the anti-glare inside rear view mirror is set to automatic mode, the outside rear view mirrors will activate in conjunction with the anti-glare inside rear view mirror to reduce reflected light. (→P. 95)

1-4. Adjustable components (seats, mirrors, steering wheel)

CAUTION

n When driving the vehicle

Observe the following precautions while driving.
Failing to do so may result in loss of control of the vehicle and cause an accident, resulting in death or serious injury.

- l** Do not adjust the mirrors while driving.
- l** Do not drive with the mirrors folded.
- l** Both the driver and passenger side mirrors must be extended and properly adjusted before driving.

n When a mirror is moving

To avoid personal injury and mirror malfunction, be careful not to get your hand caught by the moving mirror.

n When the mirror defoggers are operating

Do not touch the rear view mirror surfaces, as they can become very hot and burn you.

1

Before driving