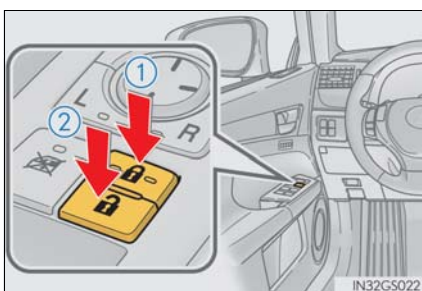


## Door Locks

The vehicle can be locked and unlocked using the entry function, wireless remote control or door lock switches.

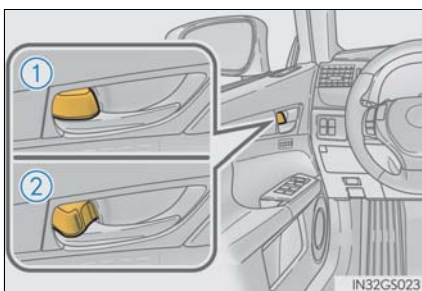
For details the entry function or wireless remote control (→ P.9, 10)

### Door lock switch



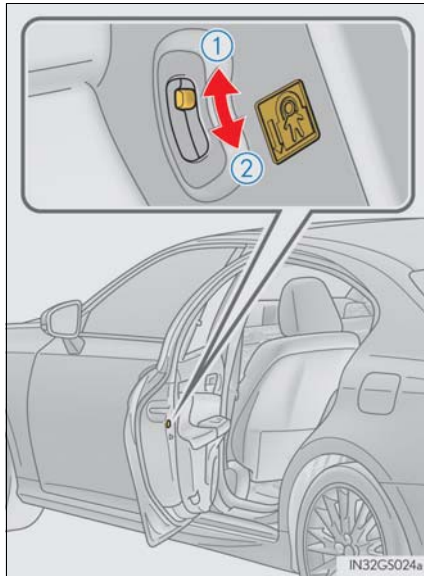
- ① Locks all the doors
- ② Unlocks all the doors

### Inside lock button



- ① Locks the door
  - ② Unlocks the door
- The front doors can be opened by pulling the inside handle even if the lock buttons are in the lock position.

## ■ Rear door child-protector lock



The door cannot be opened from inside the vehicle when the lock is set.

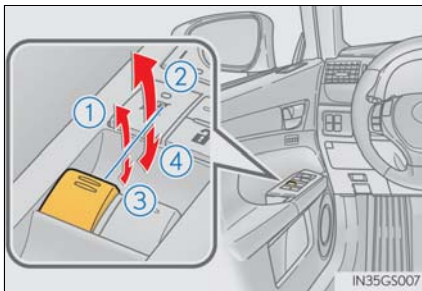
① Unlock

② Lock

These locks can be set to prevent children from opening the rear doors. Push down on each rear door switch to lock both rear doors.

## Power Windows

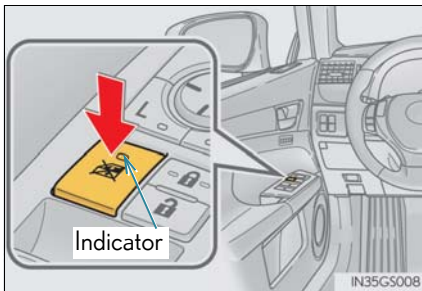
### Power window switches



- ① Closing
- ② One-touch closing\*
- ③ Opening
- ④ One-touch opening\*

\*: Pushing the switch in the opposite direction will stop window travel partway.

### Window lock switch



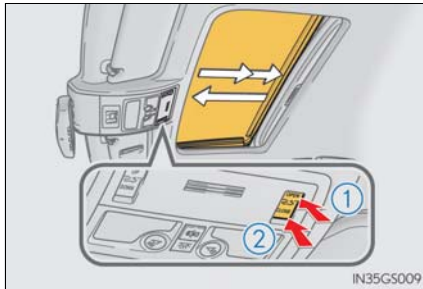
Press the switch down to lock the passenger window.

The indicator will come on.

Use this switch to prevent children from accidentally opening or closing a passenger window.

## Moon Roof

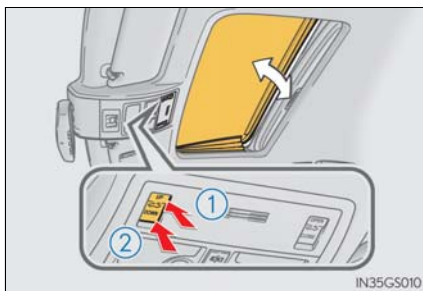
### ■ Opening and closing



- ① Opens the moon roof\*  
The moon roof stops slightly before the fully open position to reduce wind noise.  
Press the switch again to fully open the moon roof.

- ② Closes the moon roof\*  
\*: Lightly press either of the moon roof switches to stop the moon roof partway.

### ■ Tilting up and down



- ① Tilts the moon roof up\*
- ② Tilts the moon roof down\*

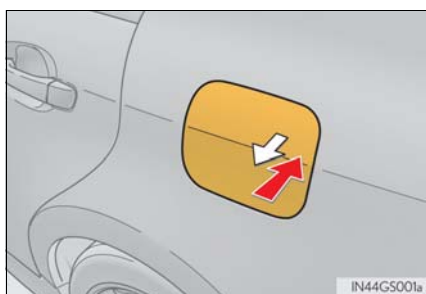
\*: Lightly press either of the moon roof switches to stop the moon roof partway.

## Fuel Tank Cap

### ■ Before refueling the vehicle

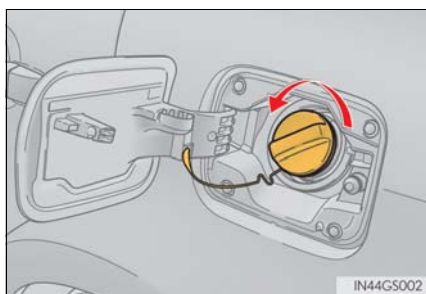
- Close all the doors and windows, and turn the engine switch off.
- Confirm the type of fuel.

### ■ Opening the fuel tank cap

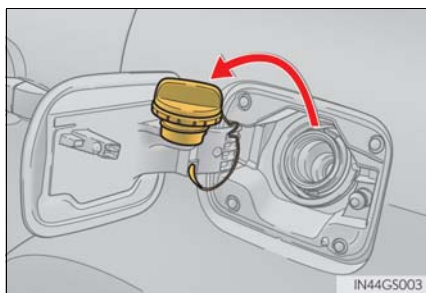


- 1** With the doors unlocked, press the center of the rear edge of the fuel filler door.

Push until you hear a click and take your hand away to slightly open the fuel filler door. Then open the door fully by hand.



- 2** Turn the fuel tank cap slowly to open.

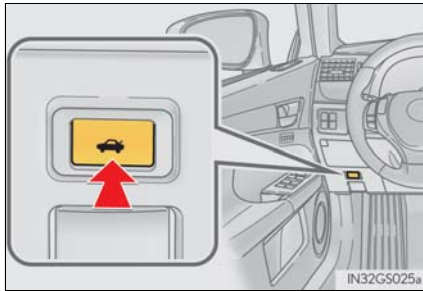


- 3** Hang the fuel tank cap on the back of the fuel filler door.

## Trunk

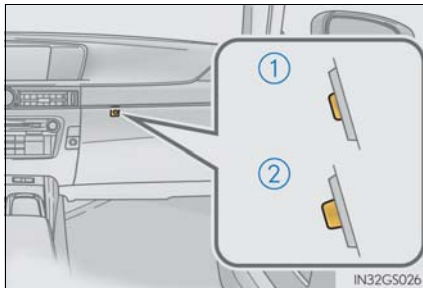
### ■ Opening the trunk

#### ● From inside the vehicle



Press the opener switch.

If the vehicle is equipped with a power trunk opener and closer, the trunk lid automatically opens fully.



Turn the main switch in the glove box off to disable the trunk opener.

① On

② Off

The trunk lid cannot be opened even with the wireless remote control or the entry function.

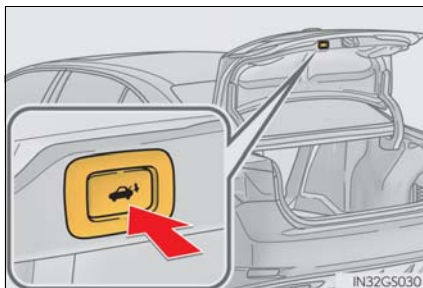
#### ● From outside the vehicle

- Entry function  
→P.10
- Wireless remote control  
→P.9

### ■ Trunk easy closer (vehicles with power trunk opener and closer)

In the event that the trunk lid is left slightly open, the trunk easy closer will automatically close it to the fully closed position.

### ■ Trunk closer switch (vehicles with power trunk opener and closer)



Pressing the switch closes the trunk lid automatically. (A buzzer sounds.)

Pressing the switch while the trunk lid is closing opens the trunk lid again.