

## SECTION 4

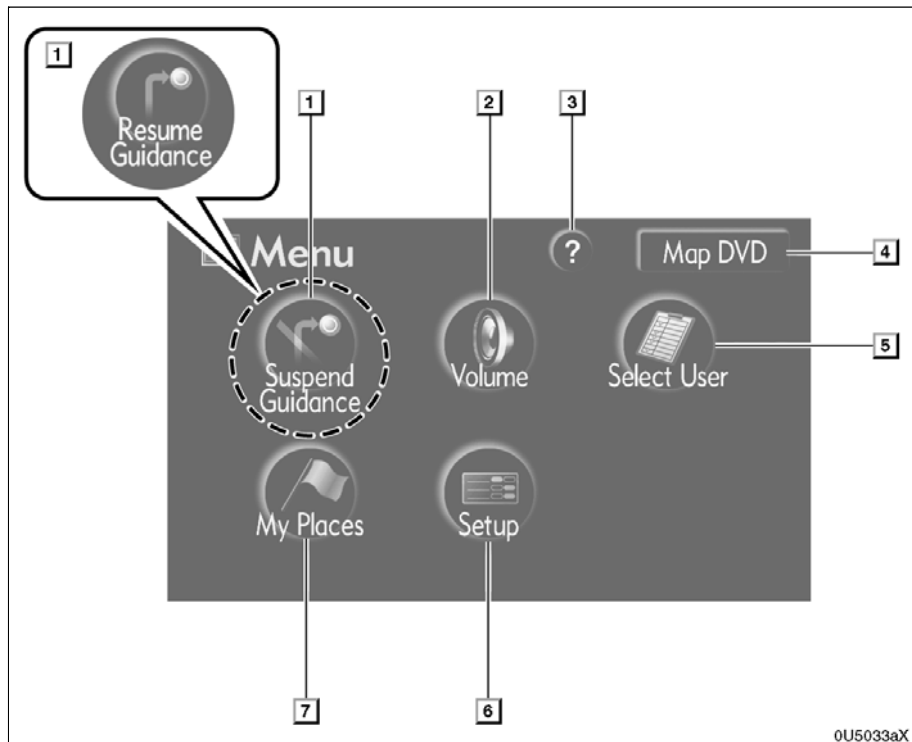
### ADVANCED FUNCTIONS

#### Descriptions of functions for more effective use

• Quick reference ("Menu" screen)	86
• Quick reference ("Setup" screen)	87
• Suspending and resuming guidance	88
• Volume	89
• User selection	90
• My places	93
Registering memory points .....	94
Editing memory points .....	95
Deleting memory points .....	99
Registering home .....	100
Deleting home .....	101
Registering area to avoid .....	101
Editing area to avoid .....	102
Deleting area to avoid .....	105
Deleting previous points .....	105
• Setup	106

## Quick reference (“Menu” screen)

The “Menu” screen allows effective use of the navigation system. To display the “Menu” screen, push the “MENU” button.



**1 “Suspend Guidance” and “Resume Guidance”**

Suspends or resumes guidance. . . . 88

**2 “Volume”**

Sets the volume for voice guidance.  
 . . . . . 89

**3 “?”**

Function help for the “Menu” screen can be viewed on this screen. . . . . 28

**4 “Map DVD”**

Displays information regarding the disc version or covered area. . . . . 205

**5 “Select User”**

Up to 3 different settings for different users can be memorized. . . . . 90

**6 “Setup”**

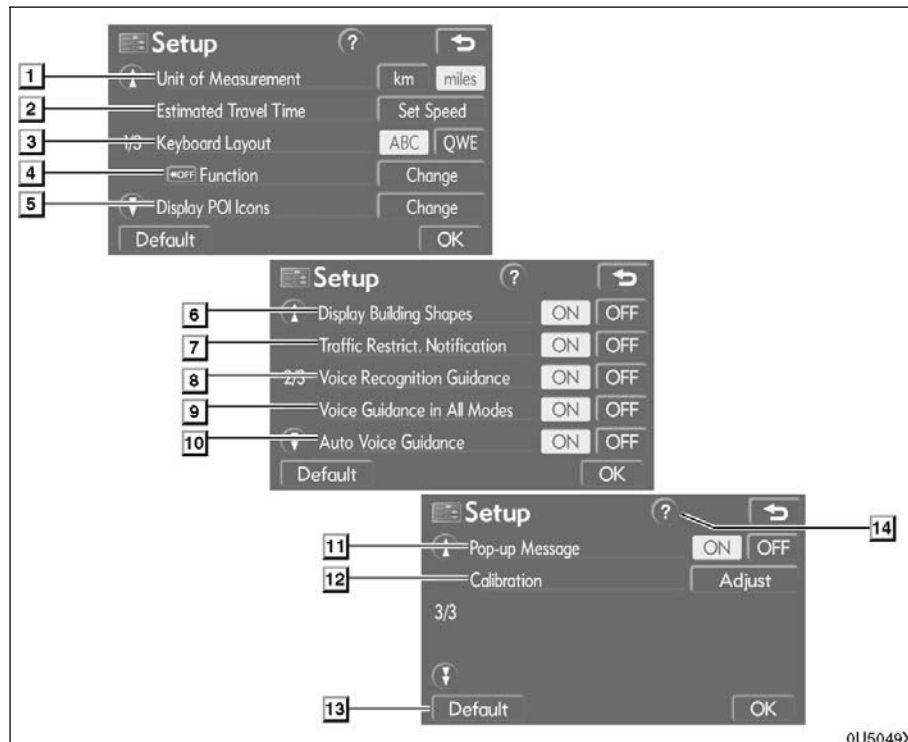
Enables various settings for the navigation system. . . . . 87, 106

**7 “My Places”**

Enables changes to “Memory points”, “Home” and “Areas to avoid”. Enables deletion of the previous point. . . . . 93

## Quick reference (“Setup” screen)

The items shown on the “Setup” screen can be set. To display the “Setup” screen, push the “MENU” button and touch “Setup”.

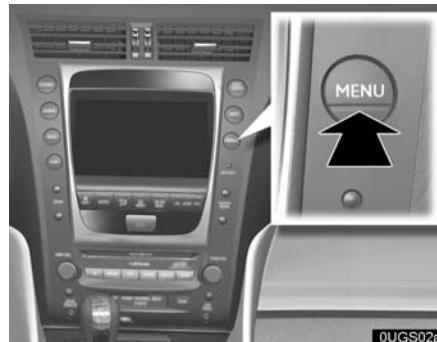


- |   |  |
|---|--|
| <p><b>1 “Unit of Measurement”</b><br/>The distance units “km” or “miles” can be selected. .... 106</p> <p><b>2 “Estimated Travel Time”</b><br/>The system to display the travel time and the arrival time to the destination on the route guidance screen can be set. .... 107</p> <p><b>3 “Keyboard Layout”</b><br/>Key layout can be changed. .... 108</p> <p><b>4 “OFF Function”</b><br/>The choice whether to display each touch-screen button and current street name on the map screen can be set. .... 109</p> | <p><b>5 “Display POI Icons”</b><br/>A selection of 6 icons displayed on the “Display POI Icons” top screen is possible. .... 109</p> <p><b>6 “Display Building Shapes”</b><br/>Selection of either ON or OFF to display the building shape on the map screen is possible. .... 110</p> <p><b>7 “Traffic Restrict. Notification”</b><br/>Notification of seasonal restrictions can be selected. .... 111</p> <p><b>8 “Voice Recognition Guidance”</b><br/>Voice recognition guidance can be set. .... 111</p> |
|---|--|

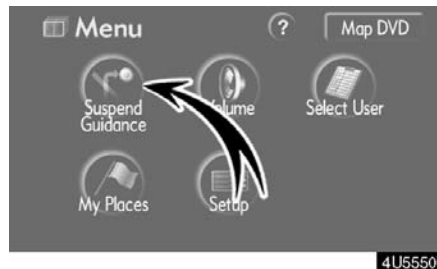
- 9 “Voice Guidance in All Modes”**  
Voice guidance can be set in all modes. . . . . 112
- 10 “Auto Voice Guidance”**  
Automatic voice guidance can be set. . . . . 112
- 11 “Pop-up Message”**  
Selection of either ON or OFF to display the pop-up message is possible. . . 113
- 12 “Calibration”**  
Adjustment of the current vehicle position mark can be done manually. . . . . 114
- 13 “Default”**  
This touch-screen button initializes all of the settings. . . . . 106
- 14 “?”**  
Function help for the “Setup” screen can be viewed. . . . . 28

## Suspending and resuming guidance

- To suspend guidance



1. Push the “MENU” button.



2. Touch “Suspend Guidance”.

### INFORMATION

***Without route guidance, “Suspend Guidance” cannot be used.***



The screen will return to the current position map without route guidance.

- To resume guidance

1. Push the “MENU” button.



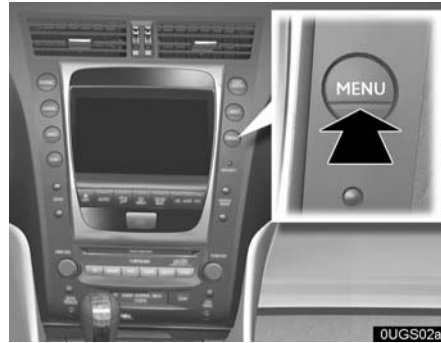
2. Touch “Resume Guidance”.



The screen will change to the current position map with route guidance.

## Volume

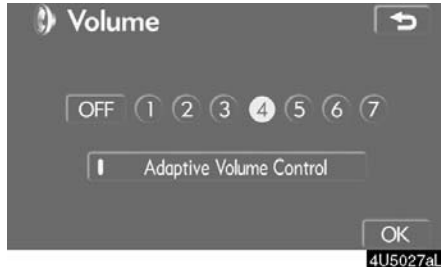
The voice guidance volume can be adjusted or switched off.



1. Push the “MENU” button.



2. Touch “Volume”.



To adjust the volume, select the desired level by touching the appropriate number. If voice guidance is not needed, touch “OFF” to disable the feature.

When selected the number or “OFF” will be highlighted.

**3. Touch “OK” to confirm your selection.**

### INFORMATION

***During route guidance, the voice guidance continues even if the navigation screen is changed to other screens.***

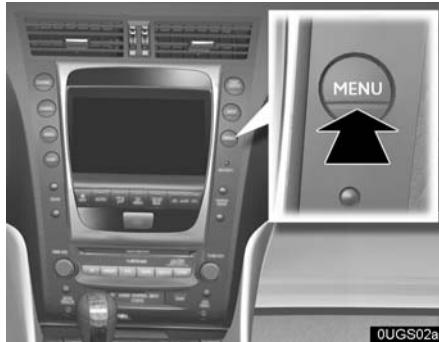
**“Adaptive Volume Control”:** By turning “Adaptive Volume Control” on, the volume is turned up automatically when the vehicle speed exceeds 50 mph (80 km/h).

To turn the “Adaptive Volume Control” system on, touch the button. The indicator will be highlighted.

## User selection

The system can memorize the following settings for up to three users.

- Map direction
- Map scale
- Map configuration
- Guidance mode
- Setup
- Volume
- Language
- Route trace
- Travel time/arrival time
- Right screen of dual map
- Road preference
- Maintenance notification

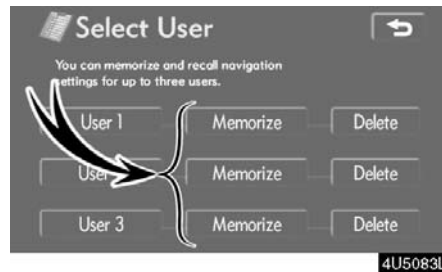


1. Push the “MENU” button.



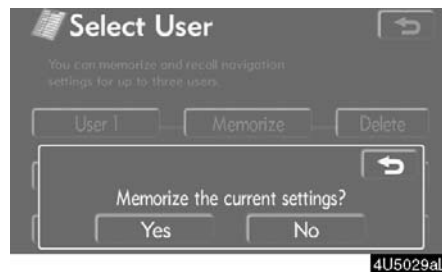
2. Touch “Select User”.


### ● To register



1. Touch “Memorize”.


The confirmation screen will be displayed.



2. To register, touch “Yes”. To return to the previous screen, touch “No” or .

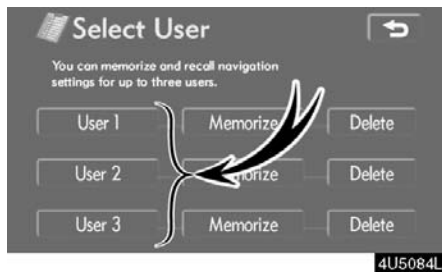
When a button that is already registered is touched, the following screen appears.



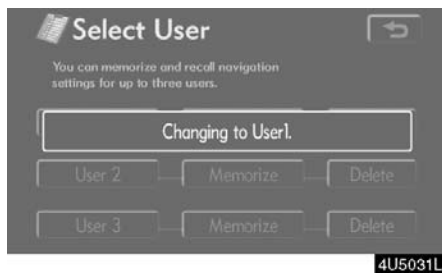
To replace, touch “Yes”. To cancel the replacement, touch “No” or .

## ADVANCED FUNCTIONS

- To change user

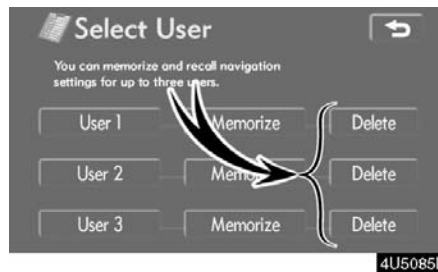


Touch "User number".



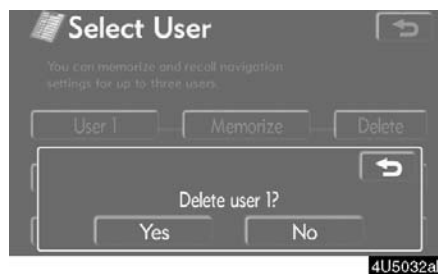
The above message appears, then the map screen will be displayed.


- To delete user



1. Touch "Delete".

The confirmation screen will be displayed.



2. To delete, touch "Yes". To return to the previous screen, touch "No" or .

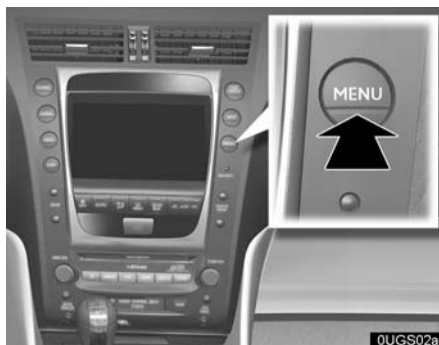


## My places —

Points or areas on the map can be registered.

The registered points can be used on the “Destination” screen. (See “ — Destination search by Home” on page 44, “ — Destination search by Quick access” on page 44 and “ — Designation search by Memory” on page 56.)

Registered areas are avoided at the time of route search.



1. Push the “MENU” button.



2. Touch “My Places”.



On this screen, the following operations can be performed.

- 1 **Registers memory points**  
(See “ — Registering memory points” on page 94.)
- 2 **Edits memory points**  
(See “ — Editing memory points” on page 95.)
- 3 **Deletes memory points**  
(See “ — Deleting memory points” on page 99.)
- 4 **Registers or deletes home**  
(See “ — Registering home” on page 100 or “ — Deleting home” on page 101.)
- 5 **Registers areas to avoid**  
(See “ — Registering area to avoid” on page 101.)
- 6 **Edits areas to avoid**  
(See “ — Editing area to avoid” on page 102.)
- 7 **Deletes areas to avoid**  
(See “ — Deleting area to avoid” on page 105.)
- 8 **Deletes previous points**  
(See “ — Deleting previous points” on page 105.)
- 9 **Number of remaining memory points**
- 10 **Number of remaining areas to avoid**

## — Registering memory points

1. Push the “MENU” button.
2. Touch “My Places” on the “Menu” screen.



3. Touch “Register”.



4. Enter the location in the same way as for a destination search. (See “Destination search” on page 41.)

After memory point registration is completed, the “Memory Point” screen will be displayed.



5. Touch “OK”.

To edit registered information, see “ — Editing memory Points” on page 95.

### INFORMATION

**Up to 106 memory points can be registered.**

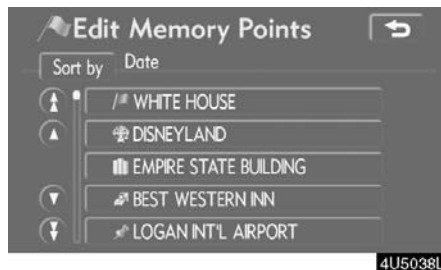
## — Editing memory points

The icon, attribute, name, location and/or telephone number of a registered memory point can be edited.

1. Push the “MENU” button.
2. Touch “My Places” on the “Menu” screen.



3. Touch “Edit”.



4. Touch the desired memory point button.



5. Touch the button to be edited.

“Icon”: To select icons to be displayed on the map. (See page 96.)

“Quick Access”: To set an attribute. Memory points with a set attribute can be used as a “Quick access” or “Home” button. (See page 97.)

“Name”: To edit memory point names. The names can be displayed on the map. (See page 98.)

“Location”: To edit location information. (See page 98.)

“Phone #”: To edit telephone numbers. (See page 99.)

6. Touch “OK”.

## ADVANCED FUNCTIONS

- To change “Icon”

1. Touch “Icon” on the “Memory Point” screen.



2. Touch the desired icon.

Turn the page by touching “Page 1”, “Page 2” or “with Sound”.

### SOUND ICONS

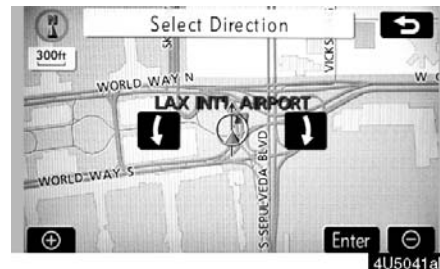
When the vehicle approaches the memory point, the selected sound will be heard.

1. Touch “with Sound” on the “Change Icon” screen.



2. Touch the desired sound icon.

The next screen appears when “Bell (with Direction)” is touched.



Touch either  or  to adjust the direction. Touch “Enter”.

The bell sounds only when the vehicle approaches this point in the direction that has been set.

● **To change “Quick Access”**

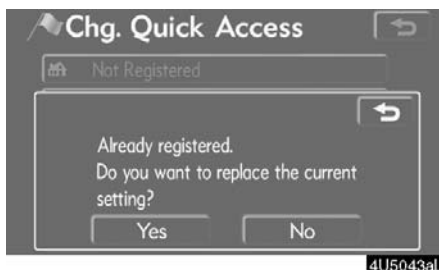
It is possible to change attributes of the quick access points. Memory points with a set attribute can be used as a “Quick Access” or “Home” touch-screen button. (See “ — Destination search by Home” on page 44 and “ — Destination search by Quick access” on page 44.)

**1. Touch “Quick Access” on the “Memory Point” screen.**



**2. Touch the desired attribute.**

It is possible to replace a registered attribute.

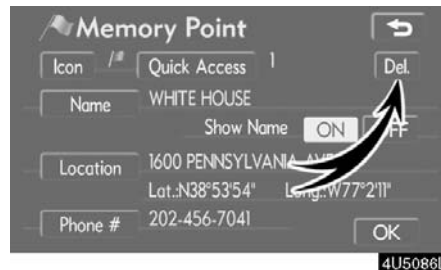


**3. To replace the attribute, touch “Yes”. To return to the previous screen, touch “No” or [Return Arrow].**

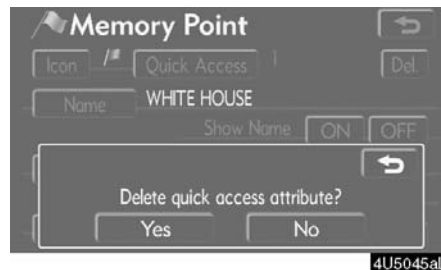
**INFORMATION**

*One “Home” and five “Quick Access” can be set.*

**DELETING “Quick Access”**



**1. Touch “Del.”.**



**2. To delete an attribute, touch “Yes”. To return to the previous screen, touch “No” or [Return Arrow].**

## ADVANCED FUNCTIONS

- To change “Name”

1. Touch “Name” on the “Memory Point” screen.



2. Enter the name using the alphanumeric keys.

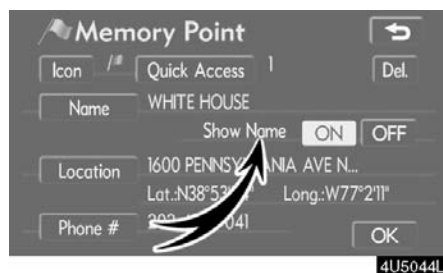
Up to 24 letters can be entered.

3. Touch “OK”.

The previous screen will be displayed.

### DISPLAYING MEMORY POINT NAMES

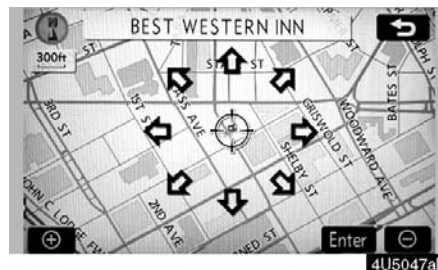
The name of a memory point that may be displayed on the map can be set.



To show the name, touch “ON” on the “Memory Point” screen. To not show it, touch “OFF”.

- To change “Location”

1. Touch “Location” on the “Memory Point” screen.



2. Touch the eight directional touch-screen button to move the cursor to the desired point on the map.

3. Touch “Enter”.

The previous screen will be displayed.

- To change “Phone #” (telephone number)

1. Touch “Phone #” on the “Memory Point” screen.



2. Enter the number using number keys.

3. Touch “OK”.

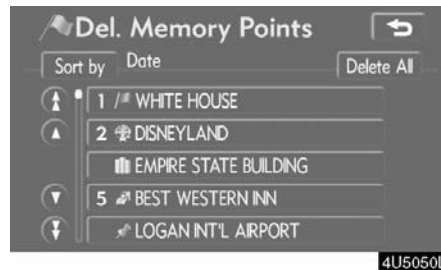
The previous screen will be displayed.

## — Deleting memory points

1. Push the “MENU” button.
2. Touch “My Places” on the “Menu” screen.



3. Touch “Delete”.



4. Touch the button to be deleted.

“Delete All”: To delete all memory points in the system.

5. To delete the memory point, touch “Yes”. To cancel the deletion, touch “No”.

## ADVANCED FUNCTIONS

### — Registering home

If home has been registered, that information can be recalled by using the “Home” touch-screen button on the “Destination” screen. (See “ — Destination search by Home” on page 44.)

1. Push the “MENU” button.
2. Touch “My Places” on the “Menu” screen.

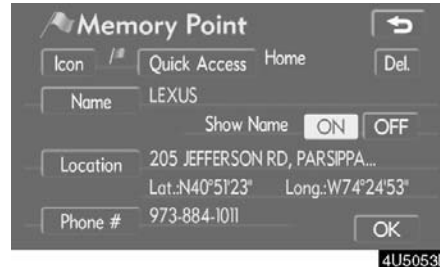


3. Touch “Register”.



4. Enter the location in the same way as for a destination search. (See “Destination search” on page 41.)

When registration of home is completed, the “Memory Point” screen will be displayed.



5. Touch “OK”.

To edit registered information, see “ — Editing memory points” on page 95.



## — Deleting home

1. Push the “MENU” button.
2. Touch “My Places” on the “Menu” screen.



3. Touch “Delete”.
4. To delete home, touch “Yes”. To cancel the deletion, touch “No”.

## — Registering area to avoid

Areas you want to avoid because of traffic jams, construction work or other reasons can be registered as areas to avoid.

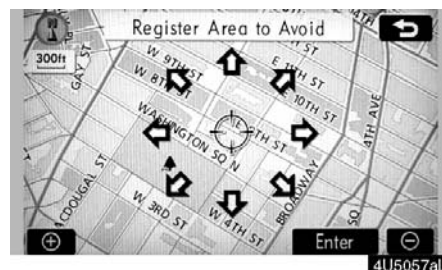
1. Push the “MENU” button.
2. Touch “My Places” on the “Menu” screen.



3. Touch “Register”.





4. Enter the location in the same way as for a destination search, or display the map of the area to be avoided. (See “Destination search” on page 41.)



5. Touch the eight directional touch-screen button to move the cursor to the desired point on the map.
6. Touch “Enter”.

## ADVANCED FUNCTIONS



7. Touch either  or  to change the size of the area to be avoided.
8. Touch "OK".

### INFORMATION

- If a destination is input in the area to avoid or the route calculation cannot be made without running through the area to avoid, a route passing through the area to be avoided may be shown.
- Up to 10 locations can be registered as points/areas to avoid. If there are 10 locations already registered, the following message will be displayed: "Unable to register additional points. Perform operation again after deleting unnecessary points."

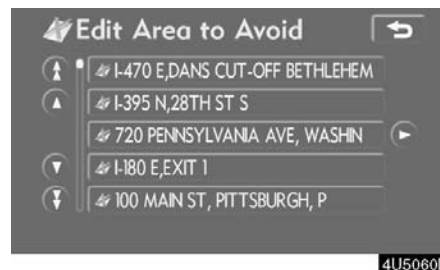
## — Editing area to avoid

The name, location and/or area size of a registered area can be edited.

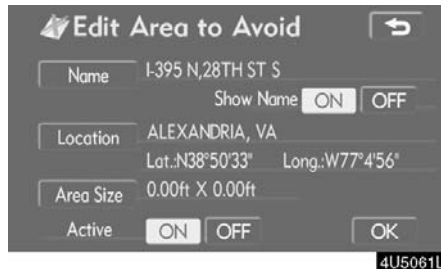
1. Push the "MENU" button.
2. Touch "My Places" on the "Menu" screen.



3. Touch "Edit".



4. Touch the desired area button.



**5. Touch the button to be edited.**

**“Name”:** To edit the name of the area to avoid. The names can be displayed on the map. (See page 103.)

**“Location”:** To edit area location. (See page 104.)

**“Area Size”:** To edit area size. (See page 104.)

**“Active”:** To turn on or off the area to avoid feature. To turn on the feature touch **“ON”** on the “Edit Area to Avoid” screen. To turn off the feature touch **“OFF”** on the “Edit Area to Avoid” screen.

**6. Touch “OK”.**

● **To change “Name”**

**1. Touch “Name” on the “Edit Area to Avoid” screen.**



**2. Enter the name using alphanumeric keys.**

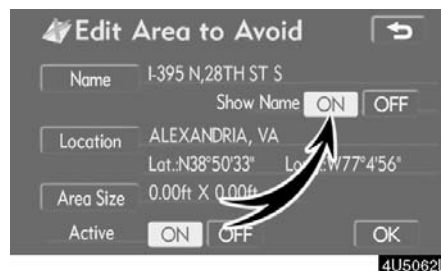
Up to 24 letters can be entered.

**3. Touch “OK”.**

The previous screen will be displayed.

**DISPLAYING NAMES OF AREAS TO BE AVOIDED**

The name of an area to be avoided that may be displayed on the map can be set.



**To show the name, touch “ON” on the “Edit Area to Avoid” screen. To not show it, touch “OFF”.**


## ADVANCED FUNCTIONS

---

- To change “Location”

1. Touch “Location” on the “Edit Area to Avoid” screen.

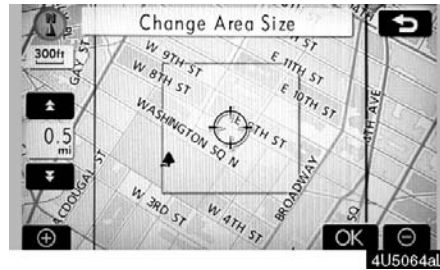




2. Touch the eight directional touch-screen button to move the cursor  to the desired point on the map.
3. Touch “Enter”.

The previous screen will be displayed.

- To change “Area Size”

1. Touch “Area Size” on the “Edit Area to Avoid” screen.



2. Touch either  or  to change the size of the area to be avoided.
3. Touch “OK”.

The previous screen will be displayed.

### — Deleting area to avoid

1. Push the “MENU” button.
2. Touch “My Places” on the “Menu” screen.



3. Touch “Delete”.



4. Touch the button to be deleted.

“Delete All”: To delete all registered areas to avoid in the system.

5. To delete the area, touch “Yes”. To cancel the deletion, touch “No”.

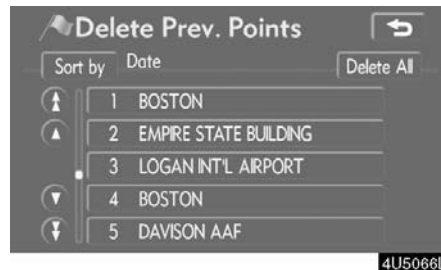
### — Deleting previous points

The previous destination can be deleted.

1. Push the “MENU” button.
2. Touch “My Places” on the “Menu” screen.

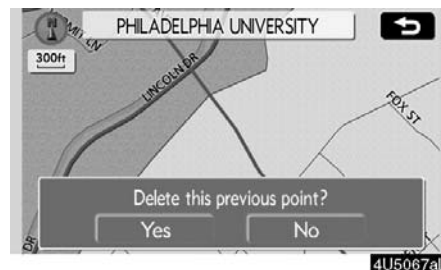


3. Touch “Delete Previous Points”.



4. Touch the button you want to delete.

“Delete All”: To delete all previous points in the system.

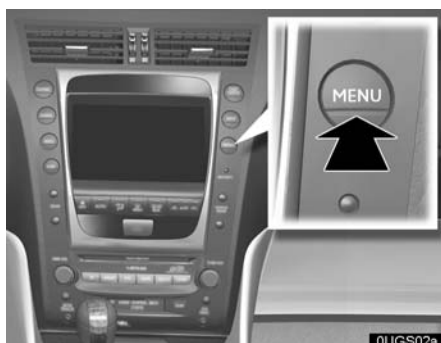


5. To delete the point, touch “Yes”. To cancel the deletion, touch “No”.

## ADVANCED FUNCTIONS

### Setup

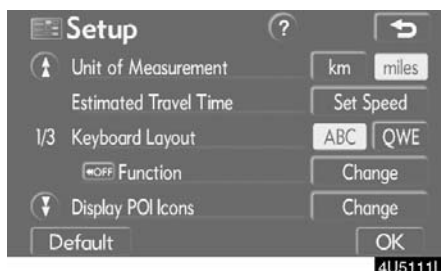
Setting the items shown on the “Setup” screen can be done. (See page 87.)



1. Push the “MENU” button.



2. Touch “Setup”.



3. Touch the items to be set.

4. Touch “OK”.

The previous screen will be displayed.

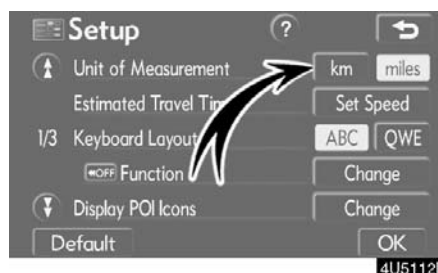
#### INFORMATION

*To reset all setup items, touch “Default”.*

#### ● Unit of measurement

Unit of measurement can be changed.

1. Push the “MENU” button.
2. Touch “Setup” on the “Menu” screen.



3. Touch “km” or “miles” of “Unit of Measurement” to choose the distance unit.

The selected button is highlighted.

4. Touch “OK”.

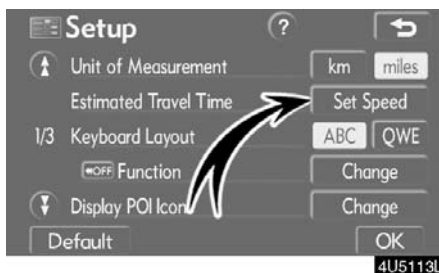
#### INFORMATION

*This function is available only in English or Spanish. To switch language, see “Selecting a language” on page 192.*

● **Estimated travel time**

The speed that is used for the calculation of the estimated travel time and the estimated arrival time can be set.

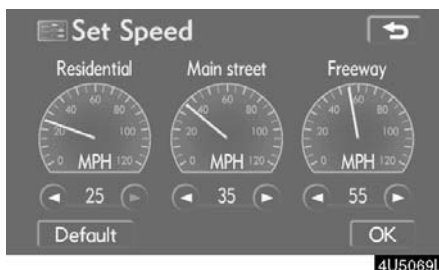
1. Push the “MENU” button.
2. Touch “Setup” on the “Menu” screen.



**INFORMATION**

- *The displayed time to the destination is the approximate driving time that is calculated based on the selected speeds and the actual position along the guidance route.*
- *The time shown on the screen may vary greatly depending on progress along the route, which may be affected by road conditions such as traffic jams, and construction work.*
- *It is possible to display up to 99 hours 59 minutes.*

3. Touch “Set Speed” of the “Estimated Travel Time”.



4. Touch ◀ or ▶ to set the average vehicle speeds for “Residential”, “Main street”, and “Freeway”.

To set the default speeds, touch “Default”.

5. After setting of the desired speeds is completed, touch “OK”.

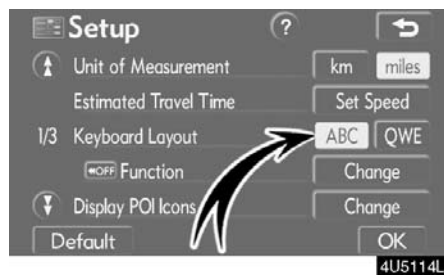
## ADVANCED FUNCTIONS

- **Input key layout**

Key layout can be changed.

1. Push the “MENU” button.

2. Touch “Setup” on the “Menu” screen.



3. Touch “ABC” or “QWE” of “Keyboard Layout” to choose the input key layout.

### LAYOUT TYPE



#### ► “ABC” type



#### ► “QWE” type

The selected button is highlighted.

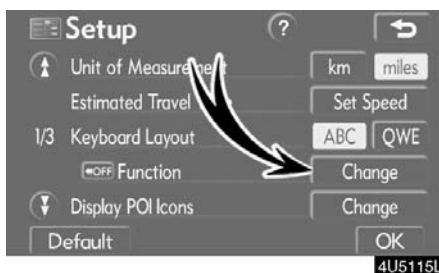
4. Touch “OK”.



- **Screen layout function**  
(**OFF** Function)

Each touch-screen button and current street name on the map screen can be displayed or hidden.

1. Push the “MENU” button.
2. Touch “Setup” on the “Menu” screen.



3. Touch “Change” of “OFF” Function”.

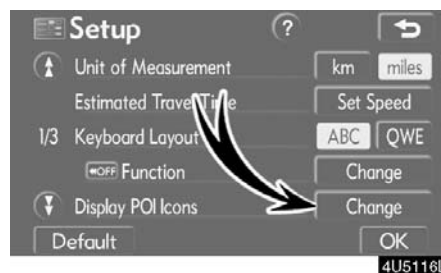


4. Touch the button to be turned off. The button becomes dimmed.  
To set the default, touch “Default”.
5. Touch “OK”.

- **POI category change**  
(Display POI Icons)

Select from among the 6 icons displayed on the “Display POI Icons” top screen, so that setting of the icons to be displayed on the map screen can be done easily.

1. Push the “MENU” button.
2. Touch “Setup” on the “Menu” screen.



3. Touch “Change” of “Display POI Icons”.



4. Touch the category button to be changed.

## ADVANCED FUNCTIONS

---



5. Touch the category button to be displayed on the “Display POI Icons” top screen.


6. Touch “OK”.

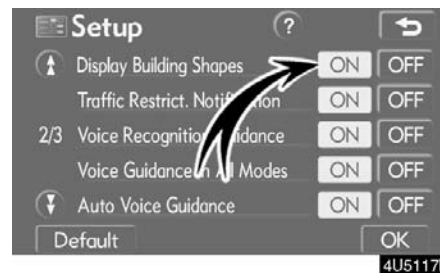
### ● Display of building shape

When the “Display Building Shapes” feature is turned on, the system will display the building shape on the map screen using a scale of 150 feet (50 m) to 300 feet (100 m).

To turn the “Display Building Shapes” on:

1. Push the “MENU” button.
2. Touch “Setup” on the “Menu” screen.

Then touch  to display page 2 of the “Setup” screen.



3. Touch “ON” of “Display Building Shapes”.

The selected button is highlighted.

4. Touch “OK”.

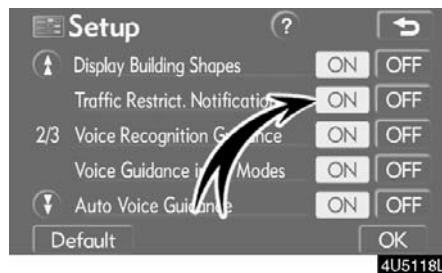
- **Notifying traffic restriction**

When the “Traffic Restrict. Notification” feature is turned on, the system notifies you of traffic or seasonal restrictions.

To turn the “Traffic Restrict. Notification” on:

1. Push the “MENU” button.
2. Touch “Setup” on the “Menu” screen.

Then touch ⓘ to display page 2 of the “Setup” screen.



3. Touch “ON” of “Traffic Restrict. Notification”.

The selected button is highlighted.

4. Touch “OK”.

- **Voice recognition guidance**

When the “Voice Recognition Guidance” feature is turned on, the voice recognition guidance can be heard automatically.

To turn the “Voice Recognition Guidance” on:

1. Push the “MENU” button.
2. Touch “Setup” on the “Menu” screen.

Then touch ⓘ to display page 2 of the “Setup” screen.



3. Touch “ON” of “Voice Recognition Guidance”.

The selected button is highlighted.

4. Touch “OK”.

## ADVANCED FUNCTIONS

---

- **Voice guidance in all modes**

When the “Voice Guidance in All Modes” feature is turned on, the voice guidance in all modes can be heard.

When the “Voice Guidance in All Modes” feature is turned off, voice guidance cannot be heard when using the audio system.

To turn the “Voice Guidance in All Modes” on:

1. Push the “MENU” button.
2. Touch “Setup” on the “Menu” screen.

Then touch ⓘ to display page 2 of the “Setup” screen.



3. Touch “ON” of “Voice Guidance in All Modes”.

The selected button is highlighted.

4. Touch “OK”.

- **Auto voice guidance**

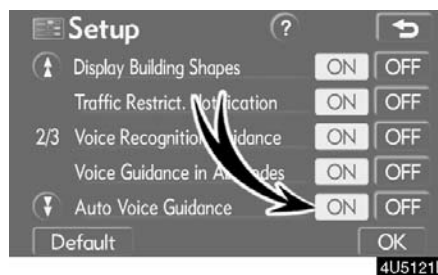
When the “Auto Voice Guidance” feature is turned on, the voice guidance can be heard automatically.

When the “Auto Voice Guidance” feature is turned off, the voice guidance can be heard only if the “MAP/VOICE” button is pushed.

To turn the “Auto Voice Guidance” mode on:

1. Push the “MENU” button.
2. Touch “Setup” on the “Menu” screen.

Then touch ⓘ to display page 2 of the “Setup” screen.



3. Touch “ON” of “Auto Voice Guidance”.

The selected button is highlighted.

4. Touch “OK”.

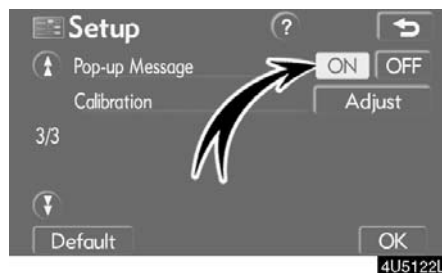
- **Pop-up message**

When the “Pop-up Message” is turned on, the pop-up message will be displayed.

To turn the “Pop-up Message” on:

1. Push the “MENU” button.
2. Touch “Setup” on the “Menu” screen.

Then touch ⓘ twice to display page 3 of the “Setup” screen.

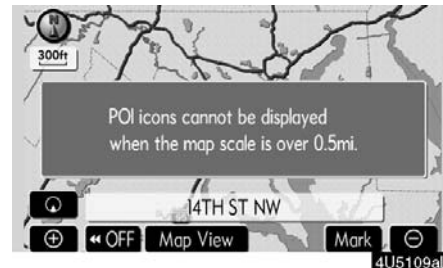


3. Touch “ON” of “Pop-up Message”.

The selected button is highlighted.

4. Touch “OK”.

When the “Pop-up Message” is turned off, the following messages will not be displayed.



This message appears when the system is in the POI mode and the map scale is 1 mile (1.6 km) or greater.




The message appears when the map is switched to the dual map screen mode.

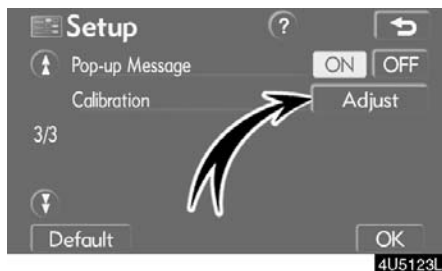
## ADVANCED FUNCTIONS

- **Current position/tire change calibration**

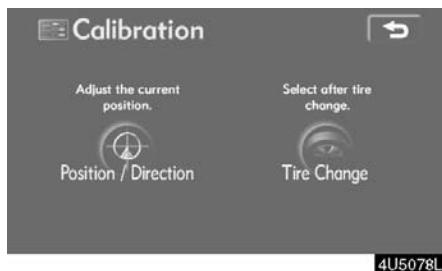
The current vehicle position mark can be adjusted manually. Miscalculation of the distance caused by tire replacement can also be adjusted.

1. Push the “MENU” button.
2. Touch “Setup” on the “Menu” screen.

Then touch  twice to display page 3 of the “Setup” screen.



3. Touch “Adjust” of “Calibration”.



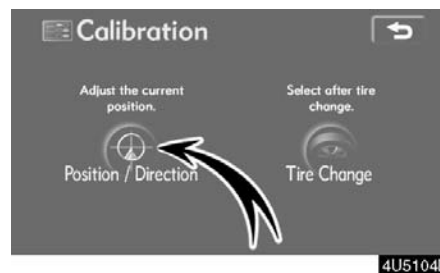
4. Touch the desired button.

### INFORMATION

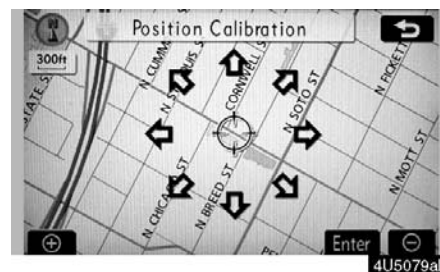
*For additional information on the accuracy of a current vehicle position, see “Limitations of the navigation system” on page 194.*

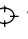
### POSITION/DIRECTION CALIBRATION

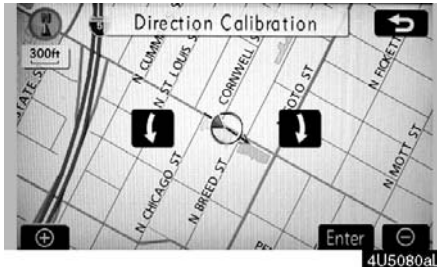
When driving, the current vehicle position mark will be automatically corrected by GPS signals. If GPS reception is poor due to location, you can manually adjust the current vehicle position mark.





1. Touch “Position/Direction”.



2. Touch the eight directional touch-screen button to move the cursor  to the desired point on the map.
3. Touch “Enter”.



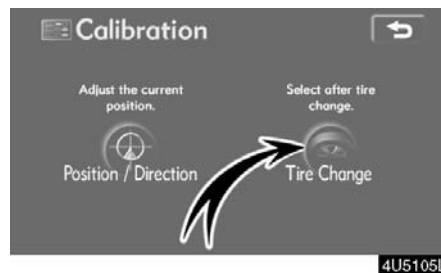
4. Touch either  or  to adjust the direction of the current vehicle position mark.

5. Touch “Enter”.

The map screen will be displayed.

## TIRE CHANGE CALIBRATION

The tire change calibration function will be used when replacing the tires. This function will adjust the miscalculation caused by the circumference difference between the old and new tires. If this procedure is not performed when the tires are replaced, the current vehicle position mark may be incorrectly displayed.



To perform a distance calibration procedure, touch “Tire Change” on the “Calibration” screen.

The message appears and the quick distance calibration is automatically started. A few seconds later, a map screen will be displayed.

## ADVANCED FUNCTIONS

---