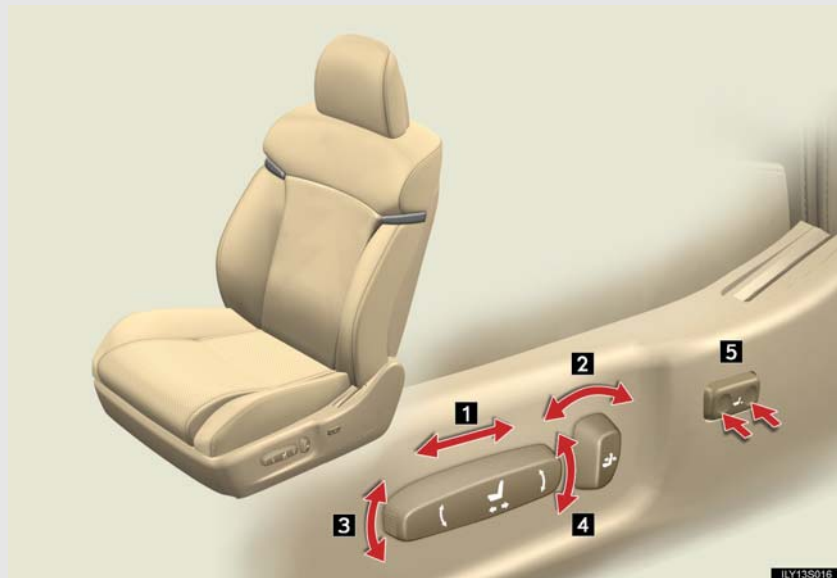


### 1-3. Adjustable components (seats, mirrors, steering wheel)

#### Front seats



**1** Seat position fore/aft control switch

For driver's seat only: Height of the head restraint also moves upward or downward with the seat movement.

**2** Seatback angle control switch

**3** Seat cushion (front) angle control switch

**4** Vertical height control switch

**5** Lumbar support control switch

### 1-3. Adjustable components (seats, mirrors, steering wheel)

#### CAUTION

##### **n Reclining adjustment**

Do not recline the seat more than necessary when the vehicle is in motion, to reduce the risk of sliding under the lap belt.

If the seat is too reclined, during an accident the lap belt may slide past the hips and apply restraint forces directly to the abdomen or your neck may contact the shoulder belt, increasing the risk of death or serious injury.

Adjustments should not be made while driving as the seat may unexpectedly move and cause the driver to lose control of the vehicle.

1

Before driving

### 1-3. Adjustable components (seats, mirrors, steering wheel)

## Driving position memory system\*

Your preferred driving position (the position of the driver's seat, steering wheel and outside rear view mirrors) can be entered into the computer's memory and recalled with the touch of a button. It is also possible to set this function to activate automatically when the doors are unlocked.

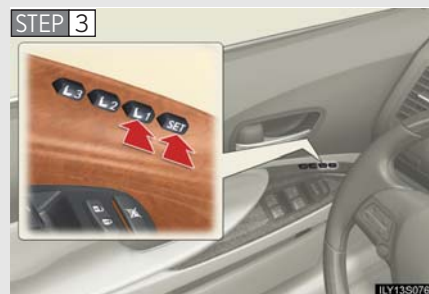
Three different driving positions can be entered into memory.

The same buttons are found on the front passenger's side, allowing the position of the front passenger's seat to be memorized.

#### **n** Entering a position to memory

**STEP 1** Turn the "ENGINE START STOP" switch to IGNITION ON mode.

**STEP 2** Adjust the driver's seat, steering wheel, and outside rear view mirrors to the desired positions.



While pushing the "SET" button, or within 3 seconds after the "SET" button is pushed, push button "1", "2" or "3" until the signal beeps.

If the selected button has already been preset, the previously recorded position will be overwritten.

\*: If equipped

### 1-3. Adjustable components (seats, mirrors, steering wheel)

#### **n** Recalling the memorized position

Check that the shift lever is set in "P".

**STEP 1** Turn the "ENGINE START STOP" switch to IGNITION ON mode.



Push button "1", "2" or "3" to recall the memorized position.

1

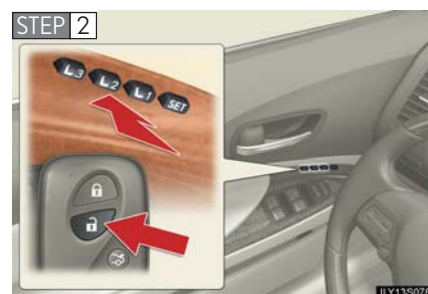
Before driving


#### **Linking driving position memory with door unlock operation**

Record your driving position to button "1", "2" or "3" before performing the following:

##### ► Using the wireless remote control

**STEP 1** Turn the "ENGINE START STOP" switch to OFF and close the driver's door.




While pushing the desired button ("1", "2" or "3"), push  on the wireless remote control until the signal beeps.

The driving position is recalled when the driver's door is unlocked using the entry function or wireless remote control and the driver's door is opened.

### 1-3. Adjustable components (seats, mirrors, steering wheel)

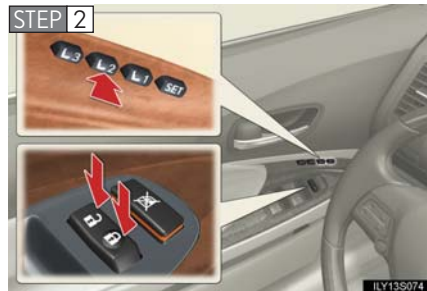
#### STEP 3 Open one of the doors.

If a door is not opened within 60 seconds after  is pushed, the doors will be locked again and the alarm will automatically be set. In case that the alarm is triggered, immediately stop the alarm. (→P. 86)

#### ► Using the door lock switch

Carry only the key (including the card key) to which you want to link the driving position. If 2 or more keys are in the vehicle, the driving position cannot be linked properly.

#### STEP 1 Turn the "ENGINE START STOP" switch to OFF mode and close the driver's door.



While pushing the desired button ("1", "2" or "3"), push the lock or unlock side on the door lock switch (either the driver or passenger side) until the signal beeps.

The driving position is recalled when the driver's door is unlocked using the entry function or wireless remote control and the driver's door is opened.

### 1-3. Adjustable components (seats, mirrors, steering wheel)

#### n Canceling the linked door unlock operation

**STEP 1** Close the driver's door with the "ENGINE START STOP" switch set to the OFF.

**STEP 2** Push the "SET" button and the  button on the wireless remote control at the same time for about 1 second until you hear 2 beeps.

#### n Retained accessory power

1 Each memorized position (except for the tilt and telescopic steering column) can be recalled within 3 minutes after the corresponding side door is opened, even if the "ENGINE START STOP" switch is turned to OFF.

1 Driver's side: Each memorized position (except for the tilt and telescopic steering column) can be recalled within 60 seconds after the driver's door is closed, even if the "ENGINE START STOP" switch is turned to OFF.

#### n If any position memory button is pushed while the adjustments are being made

The operation will stop. To reactivate the system, push the desired button ("1", "2" or "3") again.

#### n If the 12 volt battery is disconnected

The memorized positions must be reset because the computer's memory is erased when the 12 volt battery is disconnected.

#### CAUTION

##### n Seat adjustment caution

Take care during seat adjustment so that the seat does not strike the rear passenger or squeeze your body against the steering wheel.

If this happens, you can stop the movement by pressing another driving position memory button.

1

Before driving

### 1-3. Adjustable components (seats, mirrors, steering wheel)

## Head restraints

Head restraints are provided for all seats.

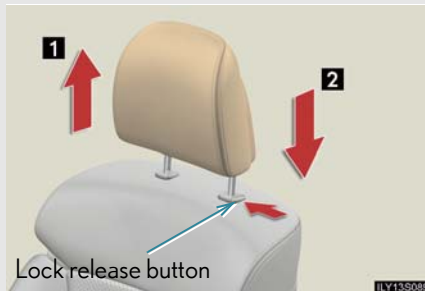
#### n Vertical adjustment

##### ► Driver's seat



Head restraint height can be adjusted automatically along with the seat position adjustment. (→P. 54)

##### ► Front passenger's seat



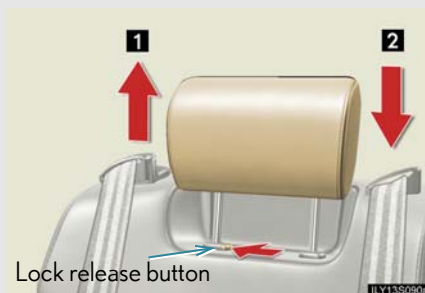
#### 1 Up

Pull the head restraint up.

#### 2 Down

Push the head restraint down while pressing the lock release button.

##### ► Outboard rear seats



#### 1 Up

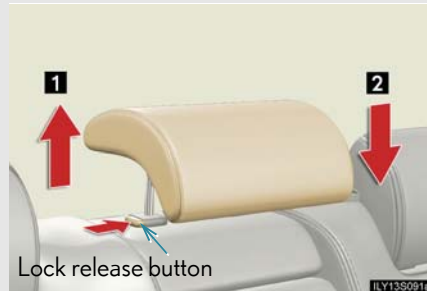
Pull the head restraint up.

#### 2 Down

Push the head restraint down while pressing the lock release button.

### 1-3. Adjustable components (seats, mirrors, steering wheel)

#### ► Center rear seat



#### 1 Up

Pull the head restraint up.

#### 2 Down

Push the head restraint down while pressing the lock release button.

#### n Horizontal adjustment

#### ► Front seats



Grip head restraint and twist to tilt forward or backward.

#### ► Outboard rear seats



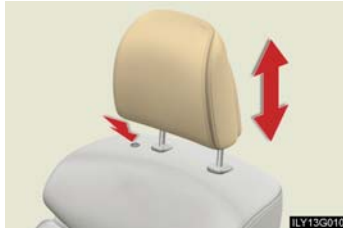
Grip head restraint and twist to tilt forward or backward.

1

Before driving

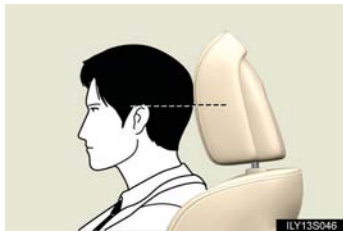
### 1-3. Adjustable components (seats, mirrors, steering wheel)

#### n Adjusting the height of the driver's head restraint manually



Push and hold the lock release button when lowering or raising the head restraint.

#### n Adjusting the height of the head restraints



Make sure that the head restraints are adjusted so that the center of the head restraint is closest to the top of your ears.

#### n Adjusting the center rear seat head restraint

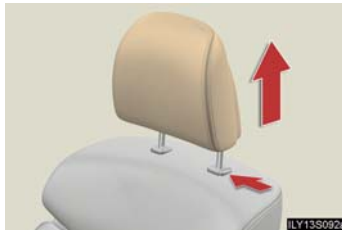
Always raise the head restraint one level from the stowed position when using.

### 1-3. Adjustable components (seats, mirrors, steering wheel)

#### n Removing and installing the driver's seat head restraint

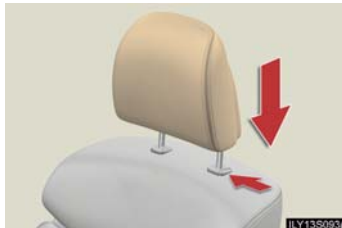
For removal and installation, ask your Lexus dealer.

#### n Removing the head restraints (except for the driver's seat)



Pull the head restraint up while pressing the lock release button.

#### n Installing the head restraints (except for the driver's seat)



Align the head restraint with the installation holes and push it down to the lock position.

Press and hold the lock release button when lowering the head restraint.

1

Before driving

#### ⚠ CAUTION

##### n Head restraint precautions

Observe the following precautions regarding the head restraints. Failure to do so may result in death or serious injury.

- 1 Use the head restraints designed for each respective seat.
- 1 Adjust the head restraints to the correct position at all times.
- 1 Do not drive with the head restraints removed.

### 1-3. Adjustable components (seats, mirrors, steering wheel)

## Seat belts

Make sure that all occupants are wearing their seat belts before driving the vehicle.

#### **n** Correct use of the seat belts



- 1** Extend the shoulder belt so that it comes fully over the shoulder, but does not come into contact with the neck or slide off the shoulder.
- 2** Position the lap belt as low as possible over the hips.
- 3** Adjust the position of the seatback. Sit up straight and well back in the seat.
- 4** Do not twist the seat belt.

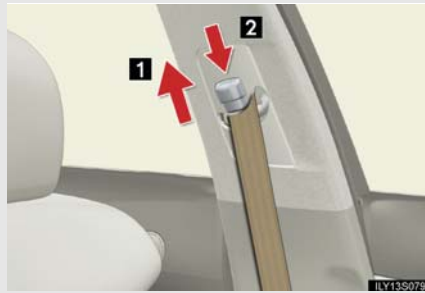
#### **n** Fastening and releasing the seat belt



- 1** Fastening the belt  
Push the tab into the buckle until a clicking sound is heard.
- 2** Releasing the belt  
Press the release button.

### 1-3. Adjustable components (seats, mirrors, steering wheel)

#### n Adjusting the height of the belt (front seats)

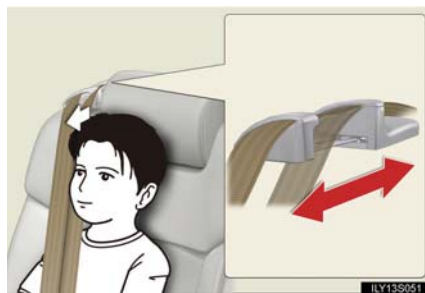


- 1 Up
- 2 Down

Move the height adjuster up and down as needed until you hear a click.

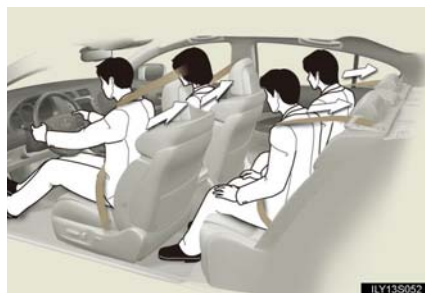
1  
Before driving

#### Seat belt comfort guide (outboard rear seats)



If the shoulder belt fits close to a person's neck, slide the seat belt comfort guide forward.

#### Seat belt pretensioners (front and outboard rear seats)



The pretensioner helps the seat belt to quickly restrain the occupant by retracting the seat belt when the vehicle is subjected to certain types of severe frontal collision.

The pretensioner may not activate in the event of a minor frontal impact, a side impact or a rear impact.

### 1-3. Adjustable components (seats, mirrors, steering wheel)

#### Pre-collision seat belts (front seats of vehicles with pre-collision system)

If the pre-collision sensor detects that a collision is unavoidable, the pre-collision system will retract the seat belt, thus enhancing the effectiveness of the seat belt pretensioner in a crash.

The same will happen if the driver makes an emergency braking or loses control of the vehicle. (→P. 207)

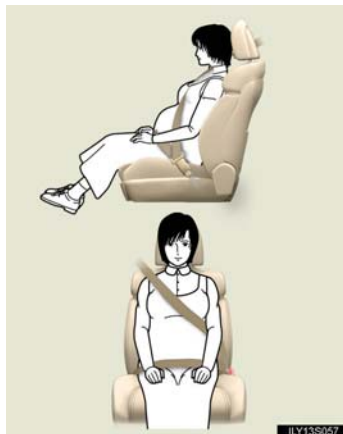
#### n Emergency locking retractor (ELR)

The retractor will lock the belt during a sudden stop or on impact. It may also lock if you lean forward too quickly. A slow, easy motion will allow the belt to extend, and you can move around fully.

#### n Automatic locking retractor (ALR)

When a passenger's shoulder belt is completely extended and then retracted even slightly, the belt is locked in that position and cannot be extended. This feature is used to hold the child restraint system (CRS) firmly. To free the belt again, fully retract the belt and then pull the belt out once more. (→P. 113)

#### n Pregnant women



Obtain medical advice and wear the seat belt in the proper way. (→P. 64)

Women who are pregnant should position the lap belt as low as possible over the hips in the same manner as other occupants. Extend the shoulder belt completely over the shoulder and position the belt across the chest. Avoid belt contact over the rounding of the abdominal area.

If the seat belt is not worn properly, not only a pregnant woman, but also the fetus could suffer death or serious injury as a result of sudden braking, sudden swerving or a collision.

### 1-3. Adjustable components (seats, mirrors, steering wheel)

#### ■ People suffering illness

Obtain medical advice and wear the seat belt in the proper way. (→P. 64)

#### ■ Child seat belt usage

The seat belts of your vehicle were principally designed for persons of adult size.

- 1 Use a child restraint system appropriately for the child, until the child becomes large enough to properly wear the vehicle's seat belt. (→P. 109)
- 1 When the child becomes large enough to properly wear the vehicle's seat belt, follow the instructions on P. 64 regarding seat belt usage.

#### ■ Replacing the belt after the pretensioner has been activated

If the vehicle is involved in multiple collisions, the pretensioner will activate for the first collision, but will not activate for the second or subsequent collisions.

#### ■ Seat belt extender



If your seat belts cannot be fastened securely because they are not long enough, a personalized seat belt extender is available from your Lexus dealer free of charge.

1

Before driving

### 1-3. Adjustable components (seats, mirrors, steering wheel)

#### CAUTION

Observe the following precautions to reduce the risk of injury in the event of sudden braking, sudden swerving or an accident. Failing to do so may cause death or serious injury.

##### **n Wearing a seat belt**

- I** Ensure that all passengers wear a seat belt.
- I** Always wear a seat belt properly.
- I** Each seat belt should be used by one person only. Do not use a seat belt for more than one person at the same time, including children.
- I** Lexus recommends that children should be seated in the rear seat and always use a seat belt and/or an appropriate child restraint system.
- I** Do not recline the seat any more than necessary to achieve a proper seating position. The seat belt is most effective when the occupants are sitting up straight and well back in the seats.
- I** Do not wear the shoulder belt under your arm.
- I** Always wear your seat belt low and snug across your hips.

##### **n Adjustable shoulder anchor**

Always make sure the shoulder belt is positioned across the center of your shoulder. The belt should be kept away from your neck, but not falling off your shoulder. Failure to do so could reduce the amount of protection in an accident and cause death or serious injuries in the event of a sudden stop, sudden swerve or accident. (→P. 65)

##### **n Seat belt pretensioners**

- I** Do not place anything, such as a cushion, on the front passenger's seat. Doing so will disperse the passenger's weight, which prevents the sensor from detecting the passenger's weight properly. As a result, the seat belt pretensioner for the front passenger's seat may not activate in the event of a collision.
- I** If the pretensioner has activated, the SRS warning light will come on. In that case, the seat belt cannot be used again and must be replaced at your Lexus dealer.

#### CAUTION

##### **n Child restraint lock function belt precaution**

Do not allow children to play with the child restraint lock function belt. If the belt becomes twisted around a child's neck, it will not be possible to pull the belt out leading to choking or other serious injuries that could result in death. If this occurs and the buckle cannot be unfastened, scissors should be used to cut the belt.

##### **n Seat belt damage and wear**

- 1** Do not damage the seat belts by allowing the belt, plate or buckle to be jammed in the door.
- 1** Inspect the seat belt system periodically. Check for cuts, fraying, and loose parts. Do not use a damaged seat belt until it is replaced. Damaged seat belts cannot protect an occupant from injury.
- 1** Ensure that the belt and tab are locked and the belt is not twisted. If the seat belt does not function correctly, immediately contact your Lexus dealer.
- 1** Replace the seat assembly, including the belts, if your vehicle has been involved in a serious accident, even if there is no obvious damage.
- 1** Do not attempt to install, remove, modify, disassemble or dispose of a seat belt. Have any necessary repairs carried out by your Lexus dealer. Inappropriate handling of the pretensioner may cause it to activate or operate improperly and may cause death or serious injury.

##### **n Using a seat belt extender**

- 1** Do not wear the seat belt extender, if you can fasten the seat belt without the extender.
- 1** Do not use the seat belt extender when installing a child restraint system, because the belt will not securely hold the child restraint system, increasing the risk of death or serious injury in the event of an accident.
- 1** The personalized extender may not be safe on another vehicle, when used by another person, or at a different seating position other than the one originally intended.

##### **n Precaution for pre-collision seat belts**

Do not rely solely on the pre-collision system to avoid accidents. Always pay attention to the surrounding conditions, and drive safely and responsibly.

1

Before driving

### 1-3. Adjustable components (seats, mirrors, steering wheel)



#### NOTICE

**n When using a seat belt extender**

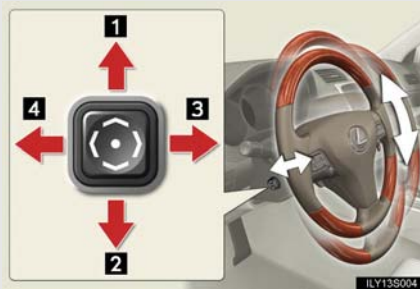
When releasing the seat belt, press on the buckle release button on the extender, not on the seat belt.

This helps prevent damage to the vehicle interior and the extender itself.

### 1-3. Adjustable components (seats, mirrors, steering wheel)

## Steering wheel

The steering wheel can be adjusted to a comfortable position while the "ENGINE START STOP" switch is in ACCESSORY or IGNITION ON mode.



- 1 Up
- 2 Down
- 3 Toward the driver
- 4 Away from the driver

1

Before driving

#### Auto tilt away and auto return



When the "ENGINE START STOP" switch is turned OFF, the steering wheel returns to its stowed position by moving up and away to enable easier driver entry and exit.

Switching to ACCESSORY or IGNITION ON mode will return the steering wheel to the original position.

#### ⚠ CAUTION

##### n While driving

Do not adjust the steering wheel.  
Doing so may cause the driver to mishandle the vehicle and an accident, resulting in death or serious injury.

### 1-3. Adjustable components (seats, mirrors, steering wheel)

#### Inside rear view mirror

In the auto mode, sensors are used to detect the headlights of vehicles behind and automatically reduces the reflected light.



Turns auto mode on/off

The indicator comes on when auto mode is turned on.

The mirror is automatically set to auto whenever the "ENGINE START STOP" switch is turned IGNITION ON mode.

#### n To prevent sensor error



To ensure correct functioning of the sensors, do not touch or cover the sensors.

#### ⚠ CAUTION

##### n While driving

Do not adjust the position of the mirror.

Doing so may lead to mishandling of the vehicle and an accident, resulting in death or serious injury.

### 1-3. Adjustable components (seats, mirrors, steering wheel)

## Outside rear view mirrors

Mirror angle can be adjusted using the switch when the “ENGINE START STOP” switch is in ACCESSORY or IGNITION ON mode.



- 1 Select the mirror to adjust (“L”: left or “R”: right)
- 2 Adjust the mirror up, down, in, or out using the switch

1

Before driving

### Folding and extending the mirrors



- 1 Press the switch

Pressing again will extend the mirrors.

#### n When the mirrors are fogged up

Turn on the mirror heaters to defog the mirrors. (→P. 243)

#### n Auto anti-glare function

When the inside rear view mirror is set to auto mode, the outside rear view mirrors will activate in conjunction with the inside rear view mirror to reduce reflected light. (→P. 72)

### 1-3. Adjustable components (seats, mirrors, steering wheel)

#### **n Linked mirror function when reversing**

The outside rear view mirrors will automatically angle downwards when the vehicle is reversing in order to give a better view of the ground. However, this function will not operate when the mirror select switch is in the neutral position (neither "L" nor "R" selected).

#### **n One-touch adjustment of the mirror angle (vehicles with driving position memory)**

A desired mirror face angle can be entered to memory and adjusted with the touch of a button. (→P. 56)

#### **! CAUTION**

##### **n While driving**

Observe the following precautions.

Failing to do so may result in losing control of the vehicle and cause an accident, resulting in death or serious injury.

**I** Do not adjust the mirrors.

**I** Do not drive with the mirrors folded back.

**I** Before driving, be sure to extend mirrors and make an adjustment properly.

##### **n When a mirror is moving**

To avoid injury and mirror malfunction, be careful not to get your hand caught by the moving mirror.

##### **n When the mirror heaters are operating**

Do not touch the rear view mirror surfaces, as they can become very hot and burn you.