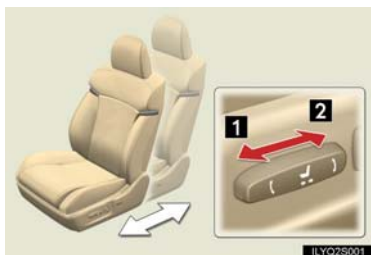


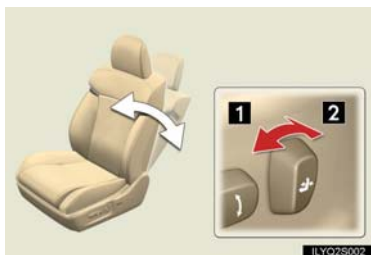
## Seats

### n Adjusting seat position



- 1 Moves the seat forward
- 2 Moves the seat backward

### n Adjusting seatback angle



- 1 Tilts the seatback forward
- 2 Reclines the seatback

### n Adjusting the seat cushion



- 1 Raises and lowers the front of the cushion
- 2 Raises and lowers the entire seat

### n Adjusting the lumbar support



- 1 Firmer
- 2 Softer

## Driving Position Memory System\*

The seats can be returned to a previously set position by simply pressing a button.

The position of the steering wheel and the outside rear view mirrors is adjusted along with the driver's seat.

Positions can be conveniently stored for the vehicle's primary drivers and passengers.

### n Setting memory positions



While holding the "SET" button, press and hold one of the memory buttons ("1", "2", or "3") until you hear a beep.

The current position of the driver's or front passenger's seat, and the outside rear view mirror and steering wheel (driver's side switch only) are stored.


### n Recalling memory positions



Press one of the memory buttons ("1", "2", or "3").

### n Linking driving position memory with door unlock operation (driver's side only)



While holding the desired memory button, press and hold  button on the wireless remote control until you hear a beep.

To prevent triggering of the alarm, open one of the doors within 60 seconds after the beep is heard.

Linking driving position memory to the door unlock operation allows the memory position to be recalled automatically when the driver's door is opened. (The linked function does not operate if the driver's door is unlocked using the mechanical key or manually from inside the vehicle.)

\*: If equipped

Entering and Exiting

Before Driving

When Driving

Rain and Night Driving

Driving Comfort

Opening and Closing

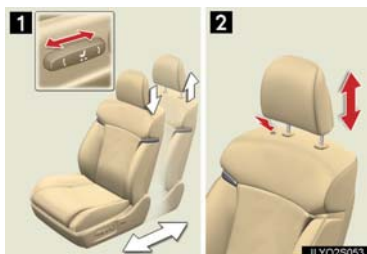
What to do if ...

Customizing Your Lexus

## Head Restraints

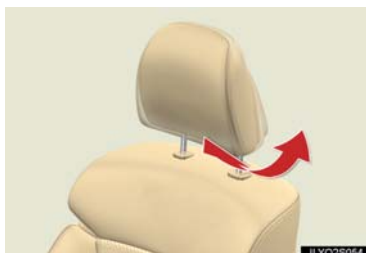
### n Driver's seat

#### ► Vertical adjustment



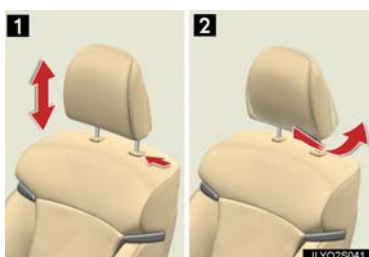
- 1 Automatically: head restraint height can be adjusted automatically along with the seat position adjustment. (→P.13)
- 2 Manually: push and hold the lock release button when lowering or raising the head restraint.

#### ► Horizontal adjustment



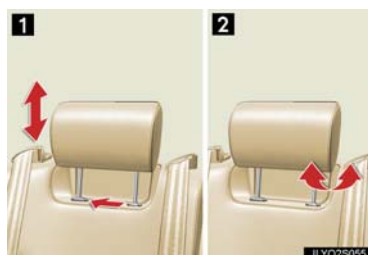
Grip the head restraint and twist to tilt forward or backward.

### n Front passenger's seat



- 1 Height adjustment: to raise the head restraint, pull it upward. To lower the head restraint, push it down while pressing the lock release button.
- 2 Horizontal adjustment: grip the head restraint and twist to tilt forward or backward.

## n Outside rear seats



**1** Height adjustment: to raise the head restraint, pull it upward. To lower the head restraint, push it down while pressing the lock release button.

**2** Horizontal adjustment: grip the head restraint and twist to tilt forward or backward.

## n Center rear seat



Height adjustment: to raise the head restraint, pull it upward. To lower the head restraint, push it down while pressing the lock release button.

## Seat Belts

### n Adjusting shoulder belt height (front seats only)



**To raise:** pull the anchor upward.

**To lower:** depress the button and push the anchor down.

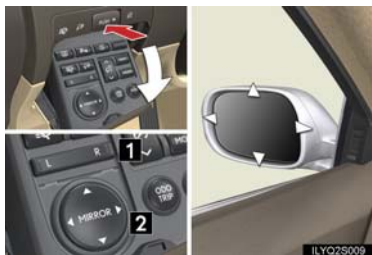
### n Seat belt comfort guides (outboard rear seats only)



If the shoulder belt fits close to the neck, slide the comfort guide forward.

## Outside Rear View Mirrors

### n Adjusting the mirrors



**1** To select the mirror you wish to adjust (L or R), use the select switch.

**2** To adjust mirror angle, use the control switch.

The mirrors will automatically angle downwards when the vehicle is reversing.

To disable this function, set the select switch in the neutral position (neither L nor R selected).

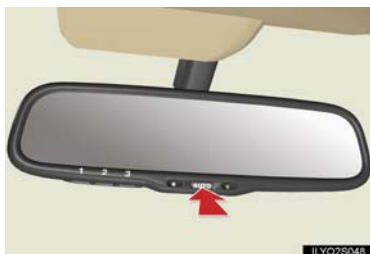
### n Folding and extending the mirrors



To fold the mirrors, press the button. Press the button again to return them to the extended position.

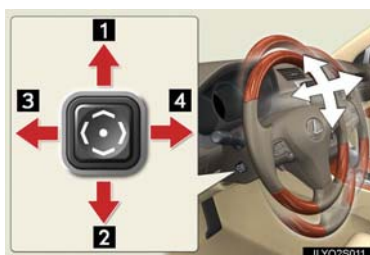
## Inside Rear View Mirror

The mirror uses a sensor to detect light from vehicles behind and automatically reduces glare.



To turn auto mode on/off, press the auto button. The indicator comes on when auto mode is turned on.

## Steering Wheel



- 1 Up
- 2 Down
- 3 Away from the driver
- 4 Toward the driver

The steering wheel retracts automatically when the "ENGINE START STOP" switch is turned OFF to allow for easy exit and entry. The steering wheel returns automatically to its previously set position when the "ENGINE START STOP" switch is switched to ACCESSORY or IGNITION ON mode.

## Odometer/Trip Meter and Trip Meter Reset Buttons



- 1 Changes the display.
- 2 Resets the trip meter driving range to "0".

