

2-1. Driving procedures

Driving the vehicle

The following procedures should be observed to ensure safe driving.

n Starting the engine (→P. 97)

n Driving

STEP 1 With the brake pedal depressed, shift the shift lever to "D".
(→P. 100)

STEP 2 Release the parking brake.
(→P. 105)

STEP 3 Gradually release the brake pedal and gently push the accelerator pedal to accelerate the vehicle.

n Stopping

STEP 1 With the shift lever in "D", push the brake pedal.

STEP 2 If necessary, set the parking brake.

When the vehicle is stopped for an extended period of time, shift the shift lever to "P".
(→P. 100)

n Parking the vehicle

STEP 1 With the shift lever in "D", push the brake pedal.

STEP 2 Set the parking brake.
(→P. 105)

STEP 3 Shift the shift lever to "P".
(→P. 100)

STEP 4 Stop the engine.

STEP 5 Lock the door, making sure that you have the electronic key on your person.

Starting on a steep incline

STEP 1 Firmly set the parking brake and shift the shift lever to "D".

STEP 2 Gently depress the accelerator pedal.

STEP 3 Release the parking brake.

n Breaking in your new Lexus

To extend the life of the vehicle, the following precautions are recommended to observe:

- l For the first 180 miles (300 km):
Avoid sudden stops.
- l For the first 1000 miles (1600 km):
 - Do not drive at extremely high speeds.
 - Avoid sudden acceleration.
 - Do not drive continuously in the low gears.
 - Do not drive at a constant speed for extended periods.

n Operating your vehicle in a foreign country

Comply with the relevant vehicle registration laws and confirm the availability of the correct fuel. (→P. 500)

n When starting on an incline

The hill-start assist control may operate. (→P. 159)

2-1. Driving procedures

CAUTION

n When starting the vehicle

Always keep your foot on the brake pedal while stopped with the engine running. This prevents the vehicle from creeping.

n When driving the vehicle

I Do not drive if you are unfamiliar with the location of the brake and accelerator pedals to avoid depressing the wrong pedal. Accidentally depressing the accelerator pedal instead of the brake pedal will result in sudden acceleration that may lead to an accident that could result in death or serious injury.

I Do not drive the vehicle over or stop the vehicle near flammable materials.

I Do not let the vehicle roll backwards while the shift lever is in a driving position, or roll forward while the shift lever is in "R". Doing so may cause the engine not to operate or lead to poor brake and steering performance, resulting in an accident or damage to the vehicle.

I If the smell of exhaust is noticed inside the vehicle, open the windows and check that the trunk is closed. Large amounts of exhaust in the vehicle can cause driver drowsiness and eventually, death. Have the cause of the problem inspected immediately.

⚠ CAUTION**n When driving the vehicle**

- I** Do not under any circumstances shift the shift lever to "P", "R" or "N" while the vehicle is moving.
Doing so can cause significant damage to the transmission and may result in a loss of vehicle control.
- I** Do not shift the shift lever to "N" while the vehicle is moving.
Doing so may cause the engine brake not to operate properly and lead to an accident.
- I** Do not turn the engine off while driving.
The power steering and brake actuator (GS430) or brake booster (GS350) will not operate properly if the engine is not running.
- I** Use engine braking (downshift) to maintain a safe speed when driving down a steep hill.
Using the brakes continuously may cause the brakes to overheat and lose effectiveness. (→P. 102)
- I** When stopped on an inclined surface, use the brake pedal and parking brake to prevent the vehicle from rolling backward or forward and causing an accident.
- I** Be careful when driving on slippery surfaces, as the vehicle may spin or skid when downshifting, rapidly accelerating, braking or turning.
- I** Do not adjust the position of the steering wheel, the seat, or the inside or outside rear view mirrors while driving.
Doing so may result in a loss of vehicle control that can cause accidents that may result in death or serious injury.
- I** Always check that all passengers' arms, heads or other parts of their bodies are not outside the vehicle, as this may result in death or serious injury.

2-1. Driving procedures

CAUTION

n When shifting the shift lever

Be careful not to shift the shift lever with the accelerator pedal depressed. This may lead to unexpected rapid acceleration of the vehicle that may cause an accident and result in death or serious injury.

n When the vehicle is stopped

I Do not race the engine.

If the vehicle is in any gear other than "P" or "N" the vehicle may accelerate suddenly and unexpectedly, and may cause an accident.

I Do not leave the vehicle with the engine on for a long time.

If such a situation cannot be avoided, park the vehicle in an open space and check that exhaust fumes do not enter the vehicle interior.

I Always keep a foot on the brake pedal while the engine is running to prevent an accident caused by the vehicle moving.

n When the vehicle is parked

I Do not leave glasses, cigarette lighters, spray cans, or soft drink cans in the vehicle when it is in the sun.

Failure to do so may result in the following:

- Gas may leak from a cigarette lighter or spray can, and may lead to a fire.
- The temperature inside the vehicle may cause the plastic lenses and plastic material of eye glasses to deform or crack.
- Soft drink cans may fracture, causing the contents to spray over the interior of the vehicle, and may also cause a short circuit in the vehicle's electrical components.

I Always apply the parking brake, shift the shift lever to "P", stop the engine and lock the vehicle.

Do not leave the vehicle unattended while the engine is running.

I Do not touch the exhaust pipe while the engine is running or immediately after turning the engine off.

Doing so may cause burns.

I Do not leave the engine running in an area with snow build up, or where snow is expected to fall.

Exhaust gases may enter the vehicle and cause gas poisoning.

⚠ CAUTION**n When taking a nap in the vehicle**

Always turn the engine off.

Otherwise, you may accidentally move the shift lever or press the accelerator pedal, which could cause an accident or fire due to abnormal engine overheating. Additionally, if the vehicle is parked in a poorly ventilated area, exhaust fumes may enter the vehicle and cause gas poisoning.

n When braking the vehicle

1 When the brakes are wet, drive more cautiously.

Braking distance increases when the brakes are wet, and may cause one side of the vehicle to brake differently than the other side. Also the parking brake may not securely hold the vehicle.

1 If the power brake assist function does not operate, do not follow other vehicles closely and avoid downhill or sharp turns that require making. In this case, braking is still possible, but it will require more force on the pedal than usual. Braking distance may also increase.

1 Do not pump the brake pedal if the engine stalls. Each push on the pedal uses up your reserved brake fluid pressure.

1 The brake system consists of 3 individual hydraulic systems: if one of the systems fails, the other will still operate. In this case, the brake pedal should be depressed more firmly than usual and braking distance becomes longer. Do not drive your vehicle with only a single brake system. Have your brakes fixed immediately.

n If the vehicle becomes stuck or bogged (4WD models)

Do not spin the wheels recklessly when any of the tires is up in the air, or stuck in sand or mud, etc. This may damage the drive system components or propel the vehicle forward (or in another direction) and cause an accident.

2-1. Driving procedures

NOTICE

n While driving the vehicle

Do not use the accelerator pedal or depress accelerator and brake pedals together to hold the vehicle on a hill.

n When parking the vehicle

Always put the shift lever in "P". Failure to do so may cause the vehicle to move or the vehicle may accelerate suddenly if the accelerator pedal is accidentally depressed.

n Avoiding damage to vehicle parts

I Do not turn the steering wheel fully in either direction and hold it there for a long time.

Doing so may damage the power steering motor.

I When driving over bumps in the road, drive as slowly as possible to avoid damaging the wheels, underside of the vehicle, etc.

n If you hear a squealing or scraping noise (brake pad wear limit indicators)

Have your Lexus dealer check and replace the brake pads as soon as possible. The rotor damage can result if the pads are not replaced when needed.

Front brake only (GS430): Moderate levels of the brake pad and disc wear allow enhanced front braking power. As a result, the discs may wear more quickly than conventional brake discs. Therefore, when replacing the brake pads, Lexus recommends that you also have the thickness of the discs measured.

It is dangerous to drive the vehicle when the wear limits of the brake pads and/or that of the brake discs are exceeded.

n If you get a flat tire while driving

A flat or damaged tire may cause the following situations. Hold the steering wheel firmly and gradually press the brake pedal to slow down the vehicle.

I It may be difficult to control your vehicle.

I The vehicle will make abnormal sounds.

I The vehicle will behave abnormally.

Replace a flat tire with a new one. (→P. 476)

2-1. Driving procedures

Starting the engine

Modes can be switched by pressing the engine switch when carrying the electronic key on your person. (The engine can be started in any mode by operating the switch at the same time as depressing the brake pedal.)

n Changing engine switch mode



1 "OFF" mode

2 "ACC" mode

Some electrical components such as the audio system can be used.

3 "IG-ON" mode

All electrical components can be used.

n Starting the engine

STEP 1 Check that the parking brake is set.

STEP 2 Check that the shift lever is set in "P".

STEP 3 Sit in the driver's seat and firmly depress the brake pedal.

The engine switch indicator turns green.

Press the engine switch.

2

When driving

2-1. Driving procedures

n If the engine does not start

The engine immobilizer system may not have been deactivated. (→P. 52)

n When the engine switch indicator flashes in amber

The system may be malfunctioning. Have the vehicle inspected by your Lexus dealer immediately.

n Auto power OFF function

The engine switch will automatically turn OFF when left in "ACC" mode for 1 hour or more.

n Electronic key battery depletion

→P. 9

n When the electronic key battery is discharged

→P. 409

n Conditions affecting operation

→P. 7

! CAUTION

n When starting the engine

Always start the engine while sitting in the driver's seat. Do not press the accelerator pedal while starting the engine under any circumstances.
Doing so may cause an accident resulting in death or serious injury.

n Caution while driving

Do not touch the engine switch while driving.
Pressing and holding the engine switch will stop the engine, which may lead to an accident.

NOTICE

n To prevent battery discharge

Do not leave the engine switch in "ACC" or "IG-ON" mode for long periods if the engine is not running.

n When starting the engine

1 Do not race the engine.

1 If the engine becomes difficult to start or stalls frequently, have the engine checked immediately.

2

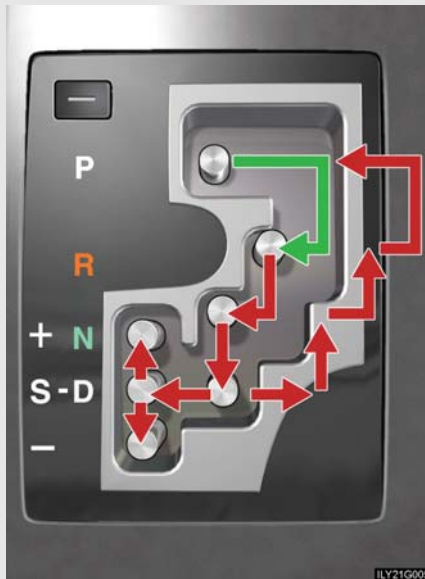
When driving

2-1. Driving procedures

Transmission

Select a shift position appropriate for the driving conditions.

n Shifting the shift lever



← While the engine switch is in "IG-ON" mode, depress the brake pedal and move the shift lever.

n Shift position uses

Shift position	Function
P	Parking the vehicle or starting the engine
R	Reversing
N	Neutral
D	Normal driving ^{*1}
S	"S" mode driving ^{*2} (→P.102)

^{*1}: To improve fuel consumption and reduce noises, set the shift lever in the "D" position for normal driving.

^{*2}: By selecting shift ranges using "S" mode, you can control engine braking forces.

n Selecting a driving mode

The following patterns can be selected to suit current driving and operating conditions.



1 Power mode

For powerful acceleration and driving in mountainous regions.

2 Normal mode

3 Snow mode

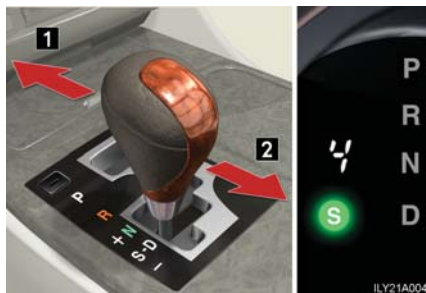
For accelerating and driving on slippery road surfaces, such as on snow.

Press "SNOW" to return to normal mode.

2-1. Driving procedures

Changing shift ranges in "S" mode

Shift the shift lever to the "S" position and operate the shift lever.



- 1 Upshifting
- 2 Downshifting

The initial shift range in "S" mode is automatically set to "5" or "4" according to the vehicle's speed. However, the initial shift range may be set to "3" or "2" if the AI-SHIFT has operated while the shift lever was in the "D" position. (→P.103)

n Shift ranges and their functions

- 1 You can choose from 6 levels of engine braking force.
- 1 A lower shift range will provide greater engine braking force than a higher shift range, and the engine revolutions will also increase.
- 1 If you accelerate while in ranges "1" to "5", the shift range may automatically range up in accordance with the vehicle's speed.

n Downshifting restrictions in "S" mode

The shift lever cannot be downshifted if the following speeds are exceeded. (The warning buzzer will sound twice in this situation.)

Downshifting	Maximum speed mph (km/h)	
	GS430	GS350
5→4	120 (194)	124 (200)
4→3	88 (142)	87 (141)
3→2	59 (95)	56 (91)
2→1	24 (38)	28 (45)

The maximum speeds can get lower when the engine is not warm such as in cold climates or before warm-up.

n When driving with the cruise control system (or dynamic radar cruise control system)

The engine brake will not operate in the "S" mode, even when downshifting to "5" or "4". (→P. 124, 127)

n Snow mode automatic deactivation

Snow mode is automatically deactivated if the engine switch is turned to "ACC" or "IG-ON" mode after driving in snow mode.

n If the shift lever cannot be shifted from "P"

→P. 484

n If the indicator does not come on even after shifting the shift lever to "S"

This may indicate a malfunction in the automatic transmission system. Have the vehicle inspected by your Lexus dealer immediately.

(In this situation, the vehicle will operate as if the shift lever is in "D".)

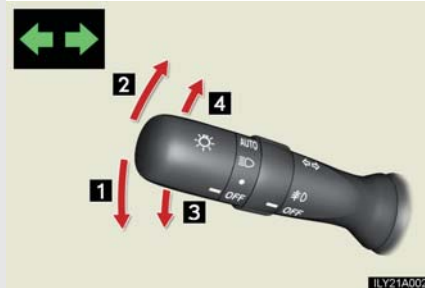
n AI-SHIFT

The AI-SHIFT automatically shifts the gear to the optimal position according to the driver's input and driving conditions.

The AI-SHIFT automatically operates when the shift lever is in the D position. (Shifting the shift lever to the S position cancels the function.)

2-1. Driving procedures

Turn signal lever



- 1 Left turn
- 2 Right turn
- 3 Move and hold the lever part-way to signal a lane change
The left hand signal will flash until you release the lever.
- 4 Move and hold the lever part-way to signal a lane change
The right hand signal will flash until you release the lever.

n **Turn signals can be operated when**

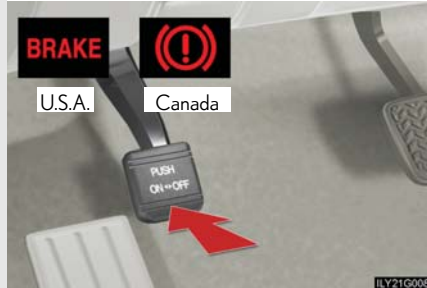
The engine switch is in "IG-ON" mode.

n **If the indicators flash faster than usual**

Check that a light bulb in the front or rear turn signal lights has not burned out.

2-1. Driving procedures

Parking brake



Sets the parking brake*
(Depressing the pedal again releases the parking brake.)

*: Fully depress the parking brake pedal with your left foot while depressing the brake pedal with your right foot.

2

NOTICE

n Before driving

Fully release the parking brake.

Driving the vehicle with the parking brake set will lead to brake components overheating, which may affect braking performance and increase brake wear.

When driving