

## 1-5. Refueling

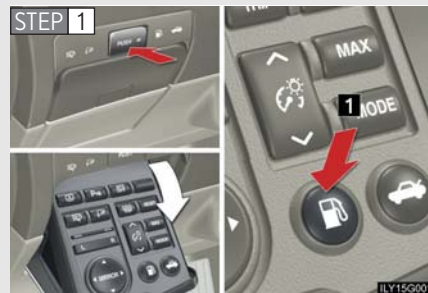
### Opening the fuel tank cap

Perform the following steps to open the fuel tank cap.

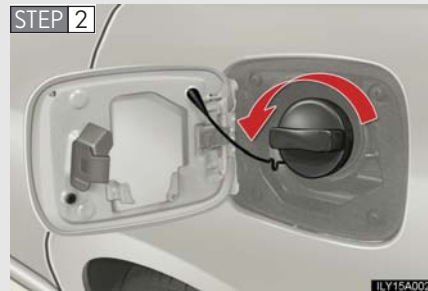
#### n Before refueling the vehicle

Turn the engine switch "OFF" and ensure that all the doors and windows are closed.

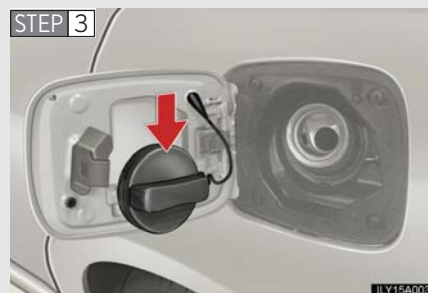
#### n Opening the fuel tank cap



- 1 Press the fuel filler door opener switch.



Turn the fuel tank cap slowly to open.



Hang the fuel tank cap on the back of the fuel filler door.

1

Before driving

## 1-5. Refueling

### Closing the fuel tank cap



After refueling, turn the fuel tank cap clockwise until you hear a click. The cap will revolve slightly in the opposite direction once released.

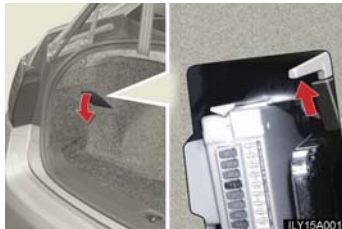
#### n Fuel types

Use premium unleaded gasoline. (91 Octane Rating [Research Octane Number 96] or higher)

#### n Fuel tank capacity

Approximately 18.7 gal. (71 L, 15.6 Imp. gal.)

#### n When the fuel filler door opener switch is inoperable



If the fuel filler door opener switch is inoperable, contact your Lexus dealer to service the vehicle. If you must refuel your vehicle, you can open the fuel filler door manually as shown. The system to lower internal pressure may not be functioning so you must turn the cap slowly as the pressure releases. In addition, fuel may spill out during refueling. Fill the fuel tank carefully and slowly.

**⚠ CAUTION****n When refueling the vehicle**

Observe the following precautions while refueling the vehicle. Failure to do so, may result in death or serious injury.

- 1** Touch the vehicle or some other metal surface to discharge any static electricity. Sparks resulting from discharging static electricity may cause the fuel vapors to ignite.
- 1** Always hold the grips on the fuel tank cap and turn it slowly to remove it. A whooshing sound may be heard when the fuel tank cap is loosened. Wait until the sound cannot be heard before fully removing the cap. In hot weather, pressurized fuel may spray out the filler neck and cause injury.
- 1** Do not allow anyone that has not discharged static electricity from their bodies to come close to an open fuel tank.
- 1** Do not inhale vaporized fuel. Fuel contains substances that are harmful if inhaled.
- 1** Do not smoke while refueling the vehicle. Doing so may cause the fuel to ignite and cause a fire.
- 1** Do not return to the vehicle or touch any person or object that is statically charged. This may cause static electricity to build up, resulting in a possible ignition hazard.

**n When replacing the fuel tank cap**

Do not use anything but a genuine Lexus fuel tank cap designed for your vehicle. Failure to do so may cause a fire or other incident which may result in death or serious injury.

**⚠ NOTICE****n Refueling**

Do not spill fuel during refueling. Failing to do so may damage the vehicle, such as causing the exhaust systems to operate abnormally or damaging fuel system components or the vehicle's painted surface.

1

Before driving