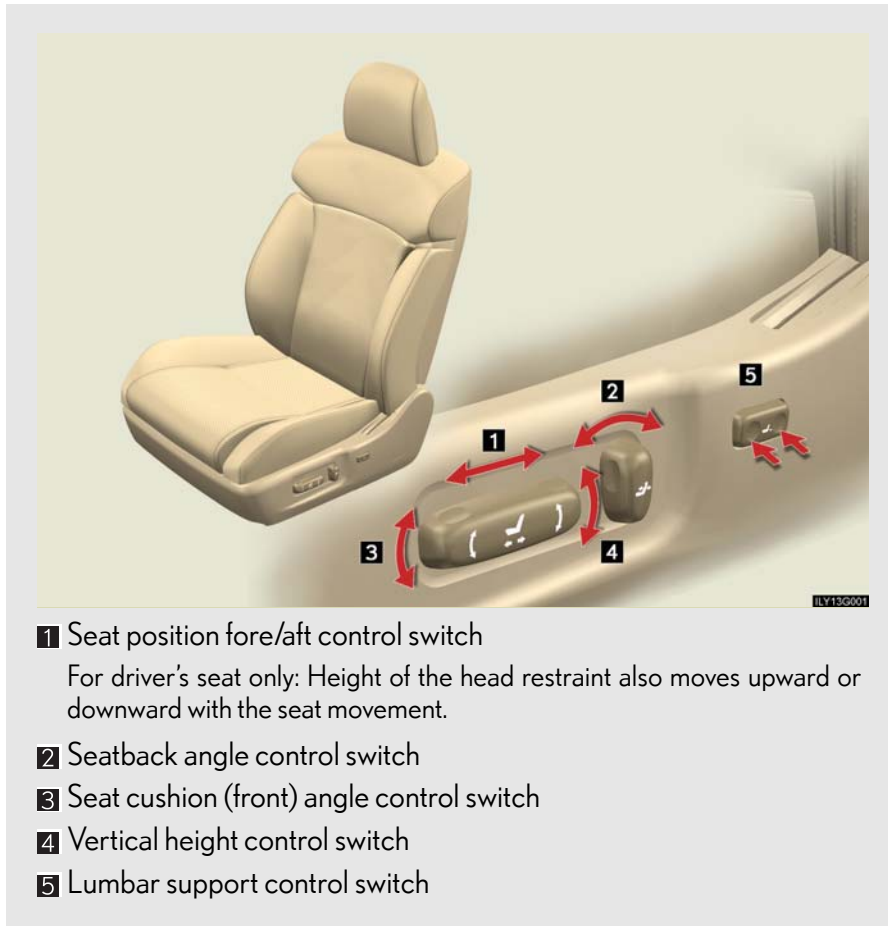


1-3. Adjustable components

Front seats



1

Before driving

1-3. Adjustable components

CAUTION

n Reclining adjustment

Do not recline the seat more than necessary when the vehicle is in motion, to reduce the risk of sliding under the lap belt.

If the seat is too reclined during an accident, the lap belt may slide past the hips and apply restraint forces directly to the abdomen or your neck may contact the shoulder belt, increasing the risk of death or serious injury.

n When adjusting the front passenger's seat from the driver's seat

Wait until a passenger is seated or have gotten off the front passenger's seat before operating the switch to avoid injuring the passenger.

1-3. Adjustable components

Driving position memory system (if equipped)

Your preferred driving position (the position of the driver's seat, steering wheel and outside rear view mirrors) can be entered into the computer's memory and recalled with the touch of a button. It is also possible to set this function to activate automatically when the doors are unlocked.

Three different driving positions can be entered into memory.

The same buttons are found on the front passenger's side, allowing the position of the front passenger's seat to be memorized.

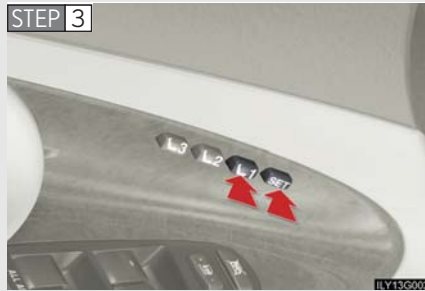
n Entering a position to memory

Check that the shift lever is set in "P".

STEP 1 Switch to "IG-ON" mode.

STEP 2 Adjust the driver's seat, steering wheel, and outside rear view mirrors to the desired positions.

STEP 3



While pushing the "SET" button, push button "1", "2" or "3" until the signal beeps.

If the selected button has already been preset, the previously recorded position will be overwritten.

1

Before driving

1-3. Adjustable components

n Recalling the memorized position

Check that the shift lever is set in "P".

STEP 1 Switch to "IG-ON" mode.

STEP 2



Push button "1", "2" or "3" to recall the desired position.

Linking driving position memory with door unlock operation (driver side only)

Memorized driving positions can be recalled when you unlock the driver's door using the entry function or wireless remote control and open the driver's door. Steering wheel position is recalled when the engine switch is set to the "IG-ON" mode.

n Setting the linked door unlock operation

STEP 1 Set the driving positions into the memory system using the "1", "2" or "3" buttons on the driver's side. (→P. 27)


STEP 2 Turn the engine switch to the "OFF" mode, then close the driver's door.

STEP 3



Push the "1", "2" or "3" button on the driver's side and the **i** button on the wireless remote control at the same time for about 1 second until you hear a beep.


STEP 4 Open one of the doors.

If a door is not opened within 60 seconds after  is pressed, the doors will be locked again and the alarm will automatically be set.

In case that the alarm is triggered, immediately stop the alarm.
(→P. 54)

n Canceling the linked door unlock operation

STEP 1 Close the driver's door with the engine switch set to the "OFF" mode.

STEP 2 Push the "SET" button and the or  button on the wireless remote control at the same time for about 1 second until you hear 2 beeps.

n Retained accessory power

Each memorized position (except for the tilt and telescopic steering column) can be activated within 30 seconds after the corresponding side door is opened, even if the engine switch is in the "OFF" mode.

n If any position memory button is pushed while the adjustments are being made

The operation will stop. To reactivate the system, push the desired button ("1" or "2") again.

n If the battery is disconnected

The memorized positions must be reset because the computer's memory is erased when the battery is disconnected.

! CAUTION

n Seat adjustment caution

Take care during seat adjustment that the seat does not strike the rear passenger or squeeze your body against the steering wheel.

If this happens, you can stop the movement by pressing another seat position memory button.

1

Before driving

1-3. Adjustable components

Head restraints

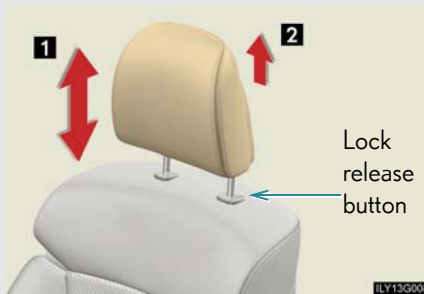
n Vertical adjustment

▶ Driver's seat



Head restraint height can be adjusted automatically along with the seat position adjustment. (→P. 25)

▶ Front passenger's and rear seats



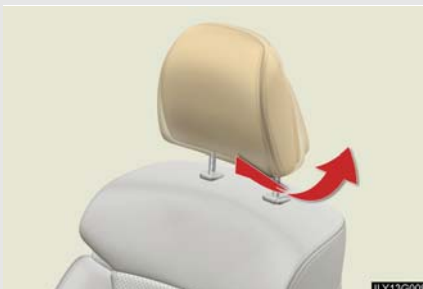
1 Grip head restraint and move it up or down.

Push and hold the lock release button when lowering the head restraint.

2 Grip head restraint and remove while holding the lock release button.

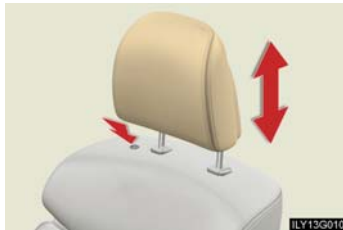
n Horizontal adjustment

▶ Front and outboard rear seats



Grip head restraint and twist to tilt forward or backward.

n **Adjusting the height of the driver's head restraint manually**



Push and hold the lock release button when lowering or raising the head restraint.

n **Removing the driver's seat head restraint**

For removal and installation, ask your Lexus dealer.

n **Adjusting the height of the head restraints**



Make sure that the head restraints are adjusted so that the center of the head restraint is closest to the top of your ears.

n **Adjusting the center rear seat head restraint**

Always raise the head restraint one level from the stowed position when using.

n **Head restraints of different seats**

The head restraints are specially designed for the seats on which they are installed.

1

Before driving

1-3. Adjustable components

CAUTION

n Head restraint precautions

Observe the following precautions regarding the head restraints. Failure to do so may result in death or serious injury.

- I** Adjust the head restraints to the correct position at all times.
- I** Do not drive with the head restraints removed.

1-3. Adjustable components

Seat belts

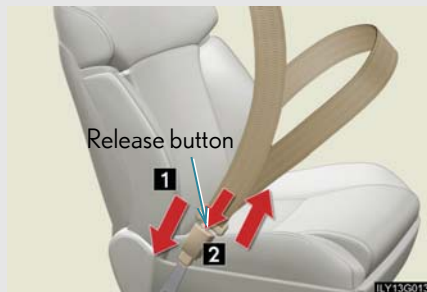
Make sure that all occupants are wearing their seat belts before driving the vehicle.

n Correct use of the seat belts



- 1 Extend the shoulder belt so that it comes fully over the shoulder, but does not come into contact with the neck or slide off the shoulder.
- 2 Position the lap belt as low as possible over the hips.
- 3 Adjust the position of the seatback. Sit up straight and well back in the seat.
- 4 Do not twist the seat belt.

n Fastening and releasing the seat belt



- 1 Fastening the belt
Push the tab into the buckle until a clicking sound is heard.
- 2 Releasing the belt
Press the release button.

1
Before driving

1-3. Adjustable components

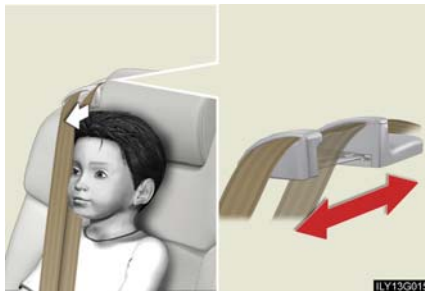
n Adjusting the height of the belt (front seats)



- 1 Up
- 2 Down

Move the height adjuster up and down as needed until you hear a click.

Seat belt comfort guide (outboard rear seats)



If the shoulder belt fits close to a person's neck, slide the seat belt comfort guide forward.

Seat belt pretensioners (front and outboard rear seats)



The pretensioner helps the seat belt to quickly restrain the occupant by retracting the seat belt when the vehicle is subjected to certain types of severe frontal collision.

The pretensioner may not activate in the event of a minor frontal impact, a side impact or a rear impact.

Pre-collision seat belts (front seats of vehicles with pre-collision system)

When the pre-collision sensor detects an obstacle and determines that a collision is unavoidable, the seat belts lessen collision injury by retracting the slack in the front seat belts before the collision, thus restraining the driver and passenger at an earlier stage.

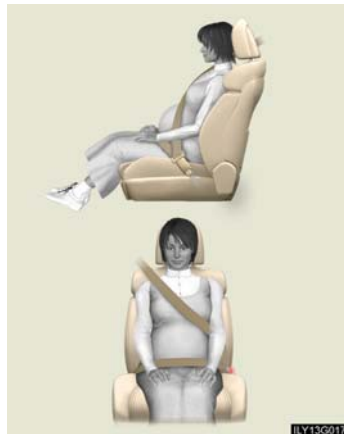
The seat belts will also operate in the event of sudden braking. (→P. 165)

n Emergency locking retractor (ELR)

The retractor will lock the belt during a sudden stop or on impact. It may also lock if you lean forward too quickly. A slow, easy motion will allow the belt to extend, and you can move around fully.

n Automatic locking retractor (ALR)

When a passenger's shoulder belt is completely extended and then retracted even slightly, the belt is locked in that position and cannot be extended. This feature is used to hold the child restraint system (CRS) firmly. To free the belt again, fully retract the belt and then pull the belt out once more. (→P. 80)

n Pregnant women

Obtain medical advice and wear the seat belt in the proper way. (→P. 33)

Women who are pregnant should position the lap belt as low as possible over the hips in the same manner as other occupants. Extend the shoulder belt completely over the shoulder and position the belt across the chest. Avoid belt contact over the rounding of the abdominal area.

If the seat belt is not worn properly, not only a pregnant woman, but also the fetus could suffer death or serious injury as a result of sudden braking or a collision.

1-3. Adjustable components

n **People suffering illness**

Obtain medical advice and wear the seat belt in the proper way. (→P. 33)

n **Child seat belt usage**

The seat belts of your vehicle were principally designed for persons of adult size.

1 Use a child restraint system appropriately for the child, until the child become large enough to properly wear the vehicle's seat belt. (→P. 76)

1 When the child becomes large enough to properly wear the vehicle's seat belt, follow the instructions on P. 33 regarding seat belt usage.

n **Replacing the belt after the pretensioner has been activated**

The seat belts cannot be used if a pretensioner has activated. After an accident, have your Lexus dealer inspect the pretensioners and replace them, if necessary.

n **Seat belt extender**



If your seat belts cannot be fastened securely because they are not long enough, a personalized seat belt extender is available from your Lexus dealer free of charge.

⚠ CAUTION**n Wearing a seat belt**

Observe the following precautions to reduce the risk of injury in the event of sudden braking or an accident. Failing to do so may cause death or serious injury.

- 1 Ensure that all passengers wear a seat belt.
- 1 Always wear a seat belt properly.
- 1 Each seat belt should be used by one person only. Do not use a seat belt for more than one person at the same time, including children.
- 1 Children should be seated in the rear seat and always use a seat belt and/or an appropriate child restraint system.
- 1 Do not recline the seat any more than necessary to achieve a proper seating position. The seat belt is most effective when the occupants are sitting up straight and well back in the seats.
- 1 Do not wear the shoulder belt under your arm.
- 1 Always wear your seat belt low and snug across your hips.

n Seat belt damage and wear

- 1 Do not damage the seat belts by allowing the belt, plate or buckle to be jammed in the door.
- 1 Inspect the seat belt system periodically. Check for cuts, fraying, and loose parts. Do not use a damaged seat belt until it is replaced. Damaged seat belts cannot protect an occupant from injury.
- 1 Ensure that the belt and tab are locked and the belt is not twisted. If the seat belt does not function correctly, immediately contact your Lexus dealer.
- 1 Replace the seat assembly, including the belts, if your vehicle has been involved in a serious accident, even if there is no obvious damage.
- 1 Do not attempt to install, remove, modify, disassemble or dispose of a seat belt. Have any necessary repairs carried out by your Lexus dealer. Inappropriate handling of the pretensioner may cause it to activate or operate improperly and may cause death or serious injury.

1-3. Adjustable components

CAUTION

n Using a seat belt extender

- I** Do not wear the seat belt extender, if you can fasten the seat belt without the extender.
- I** Do not use the seat belt extender when installing a child restraint system, because the belt will not securely hold the child restraint system, increasing the risk of death or injury in the event of a collision.
- I** The personalized extender may not be safe on another vehicle, when used by another person, or at a different seating position other than the one originally intended.

n Precaution for pre-collision seat belts

Do not rely solely on the pre-collision system to avoid accidents. Always pay attention to the surrounding conditions, and drive safely and responsibly.

NOTICE

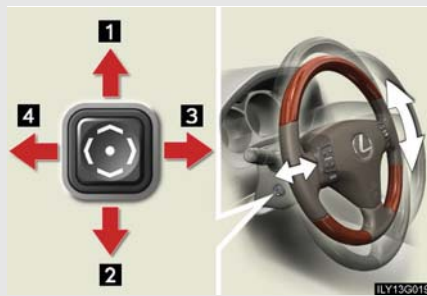
n When using a seat belt extender

When releasing the seat belt, press on the buckle release button on the extender, not on the seat belt.
This helps prevent damage to the vehicle interior and the extender itself.

1-3. Adjustable components

Steering wheel

The steering wheel can be adjusted to a comfortable position while the engine switch is in "ACC" or "IG-ON" mode.



- 1 Up
- 2 Down
- 3 Toward the driver
- 4 Away from the driver

1

Before driving

Auto tilt away and auto return



When the engine switch is turned "OFF", the steering wheel returns to its stowed position by moving up and away to enable easier driver entry and exit.

Switching to "ACC" or "IG-ON" mode will return the steering wheel to the original position.

⚠ CAUTION

n Caution while driving

Do not adjust the steering wheel while driving. Doing so may cause the driver to mishandle the vehicle and an accident, resulting in death or serious injury.

1-3. Adjustable components

Inside rear view mirror

In the "AUTO" mode, sensors are used to detect the headlights of vehicles behind and automatically reduces the reflected light.



Turns "AUTO" mode on/off

The indicator comes on when "AUTO" mode is turned ON.

The anti-glare mirror default mode is "AUTO". The anti-glare mirror is automatically set to "AUTO" whenever the engine switch is turned ON.

n To prevent sensor error



To ensure correct functioning of the sensors, do not touch or cover the sensors.

⚠ CAUTION

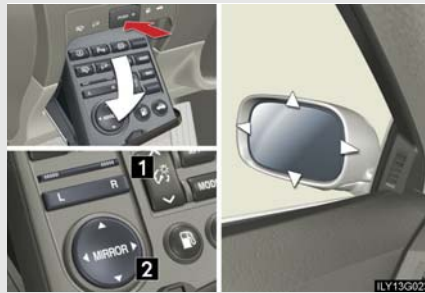
n Caution while driving

Do not adjust the position of the mirror while driving. Doing so may lead to mishandling of the vehicle and an accident, or resulting in death or serious injury.

1-3. Adjustable components

Outside rear view mirrors

Mirror angle can be adjusted using the switch when the engine switch is in "ACC" or "IG-ON" mode.



- 1 Select the mirror to adjust ("L": left or "R": right)
- 2 Adjust the mirror up, down, in, or out using the switch

1

Before driving

Folding the mirrors



- 1 Press the switch

Pressing again will extend the mirrors.

n When the mirrors are fogged up

Turn on the mirror heaters to defog the mirrors. (→P.198)

n Auto anti-glare function

When the anti-glare inside rear view mirror is set to "AUTO" mode, the outside rear view mirrors will activate in conjunction with the anti-glare inside rear view mirror to reduce reflected light. (→P.40)

1-3. Adjustable components

n **Linked mirror function when reversing**

The outside rear view mirrors will automatically angle downwards when the vehicle is reversing in order to give a better view of the ground. However, this function will not operate when the mirror select switch is in the neutral position (neither "L" nor "R" selected).

n **One touch power adjustment**

You can store and recall power adjustments such as the driver's seat, driver's seat belt height, steering wheel and the outside rear view mirrors.(→P. 27)

CAUTION

n **Caution while driving**

Observe the following precautions.
Failing to do so may result in losing control of the vehicle and cause an accident, resulting in death or serious injury.

I Do not adjust the mirrors.

I Do not drive with the mirrors folded back.

I Before driving, be sure to extend mirrors and make an adjustment properly.

n **When the mirror heaters are operating**

Do not touch the mirror surface as the mirror surface becomes hot.

And do not touch the mirror surface also when the wiper switch is on at lower than 77°F (25°C) of the outside temperature.

NOTICE

n **If ice should jam the mirror**

Do not operate the control or scrape the mirror face. Use a spray de-icer to free the mirror.