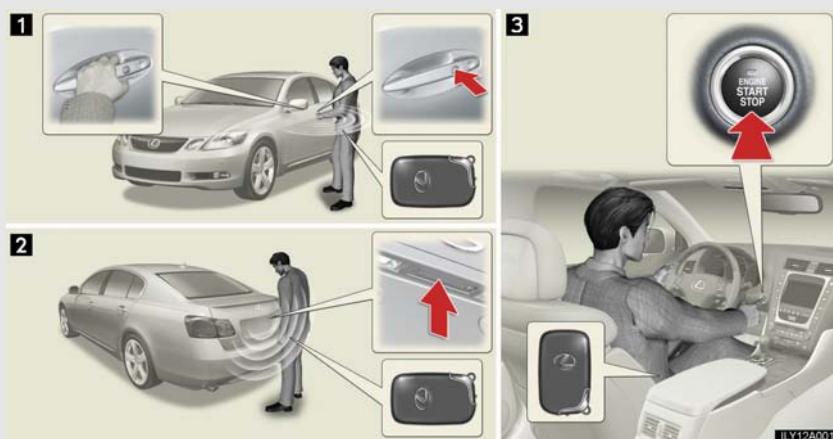


1-2. Opening, closing and locking the doors and trunk Smart access system with push-button start

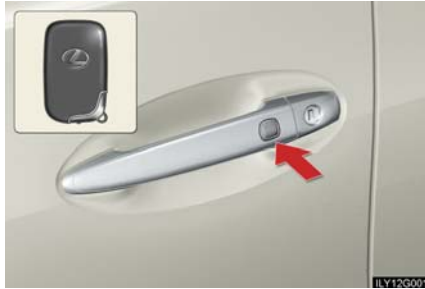
The following operations can be performed simply by carrying the electronic key, for example in your pocket.



- 1 Locks and unlocks the doors (→P. 5)
- 2 Unlocks the trunk (→P. 5)
- 3 Starts and stops the engine (→P. 97)

1-2. Opening, closing and locking the doors and trunk

Locking and unlocking the doors



Press the lock button to lock the door.



Grip the handle to unlock the door.

Make sure to touch the sensor on the back of the handle.

The door cannot be unlocked for 3 seconds after the door is locked.

1
Before driving

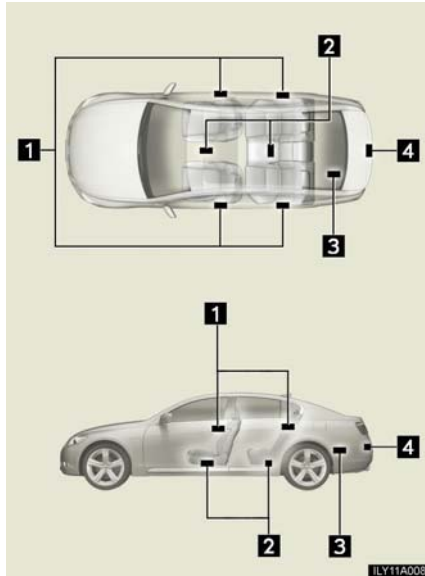
Unlocking the trunk



Press the button to unlock the trunk.

1-2. Opening, closing and locking the doors and trunk

Antenna location



- 1 Antennas outside cabin
- 2 Antennas inside cabin
- 3 Antenna outside trunk
- 4 Antenna inside trunk

1-2. Opening, closing and locking the doors and trunk

n Operation signals

A buzzer sounds and the emergency flashers flash to indicate that the doors have been locked/unlocked. (Locked: Once; Unlocked: Twice)

n Conditions affecting operation

The smart access system with push-button start uses weak radio waves. In the following situations, the communication between the electronic key and the vehicle may be affected, preventing the smart access system with push-button start and wireless remote control from operating properly. (Way of coping; →P. 486)

- 1 When the electronic key battery is depleted
- 1 Near a TV tower, electric power plant, gas station, radio station, large display, airport or other facility that generates strong radio waves or electrical noise
- 1 When carrying a portable radio, cellular phone or other wireless communication devices
- 1 When multiple electronic keys have come into contact with, or is covered by a metallic object
- 1 When multiple electronic keys are in the vicinity
- 1 When carrying or using the electronic key together with the following devices that emit radio waves
 - Another vehicle's electronic key
 - A wireless key that emits radio waves
 - Personal computer
- 1 If window tint with a metallic content or metallic object are attached to the rear window



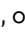

1
Before driving

1-2. Opening, closing and locking the doors and trunk

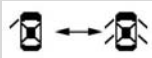

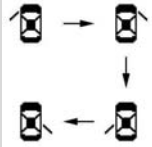

n Switching the door unlock function

It is possible to set which doors the entry function unlocks.


STEP 1 Turn the engine switch "OFF".

STEP 2 When the indicator on the key surface is turned off, push and hold , , or  for approximately 5 seconds while pushing the  button on the key.

The setting changes each time an operation is performed, as shown below. (Wait for at least 5 seconds after each operation to continue an operation.)

Multi-information display	Unlocking doors	Beep
	Hold the driver's door handle to unlock only the driver's door	Exterior: Beeps 3 times Interior: Rings once
	Hold a passenger's door handle to unlock all the doors	
	Hold the door handle to unlock the front and rear doors on your side	Exterior: Beeps 4 times Interior: Rings once
	Hold the door handle to unlock the door	Exterior: Beeps once Interior: Rings once
	Hold a door handle to unlock all doors	Exterior: Beeps twice Interior: Rings once

STEP 3 Unlock the doors using the wireless remote control and open one of the doors.

If a door is not opened within 60 seconds after  is pressed, the doors will be locked again and the alarm will automatically be set.

In case that the alarm is triggered, immediately stop the alarm. (→P. 54)

1-2. Opening, closing and locking the doors and trunk

n **Battery-saving function**

In the following circumstances, the entry function is disabled in order to prevent the vehicle and electronic key batteries from discharging.

- 1 When the entry function has not been used for 2 weeks or more
- 1 When the electronic key has been left within approximately 3 ft. (1 m) of the vehicle for 10 minutes or more

The system will resume operation when...

- 1 The vehicle is locked using the door handle lock switch
- 1 The vehicle is locked/unlocked using the wireless remote control function (→P. 14) or the mechanical key (→P. 486)

n **Electronic key battery depletion**

- 1 The standard battery life is 1 to 2 years. (The battery becomes depleted even if the electronic key is not used.) If the smart access system with push-button start or the wireless remote control function does not operate, or the detection area becomes smaller, the battery may be depleted. Replace the battery when necessary. (→ P. 409)
- 1 To avoid serious deterioration, do not leave the electronic key within 3 ft. (1 m) of the following electrical appliances.
 - TVs
 - Personal computers
 - Recharging cellular phones or cordless phones
 - Table lamps

n **To operate the system properly**

Make sure to carry the electronic key when operating the system. Do not get the electronic key too close to the vehicle when operating the system from the outside of the vehicle.

Depending on the position and holding condition of the electronic key, the key may not be detected correctly and the system may not operate properly. (The alarm may go off accidentally, or the door lock prevention may not function.)

1

Before driving

1-2. Opening, closing and locking the doors and trunk

n Note for the smart access system with push-button start

- 1 The doors may unlock if a large amount of water splashes on the door handle, such as in the rain or in a car wash. (The doors will automatically be locked after approximately 60 seconds if the doors are not opened and closed.)
- 1 Gripping the door handle when wearing a glove may not unlock the door.
- 1 If the wireless remote control is used to lock the doors when the electronic key is near the vehicle, there is a possibility that the door may not be unlocked by the entry function. (Use the wireless remote control to unlock the doors.)

n When the vehicle is not driven for extended periods

To prevent theft of the vehicle, do not leave the electronic key within 6 ft. (2 m) of the vehicle.

n Security feature

If a door is not opened within approximately 60 seconds after the vehicle is unlocked, the anti-theft system automatically locks the vehicle again.

1-2. Opening, closing and locking the doors and trunk

n Alarms and warning indicators

A combination of exterior and interior alarms as well as warnings displayed on the multi-information display are used to prevent theft of the vehicle and unforeseeable accidents resulting from erroneous operation. Take appropriate measures in response to any warning indications on the multi-information display. (→P. 462)

The following table describes circumstances and correction procedures when only alarms are sounded.

Alarm	Situation	Correction procedure
Exterior alarm sounds once for 2 seconds	Tried to lock the doors using the entry function while the electronic key is still inside the passenger compartment	Retrieve the electronic key from the passenger compartment and lock the doors again.
	Tried to exit the vehicle with the electronic key and lock the doors without first turning the engine switch "OFF"	Turn the engine switch "OFF" and lock the doors again.
	Closed the trunk while the electronic key is still inside and all doors are locked	Retrieve the electronic key from the trunk and close the trunk lid.
Exterior alarm sounds once for 10 seconds	Tried to lock the vehicle using the entry function while a door is open	Close all of the doors and lock the doors again.
Interior alarm sounds continuously	Tried to open the door and exit the vehicle without shifting the shift lever to "P"	Shift the shift lever to "P".

1
Before driving

1-2. Opening, closing and locking the doors and trunk

Alarm	Situation	Correction procedure
Interior alarm rings continuously	Switched to "ACC" mode while the driver's door is open (Opened the driver's door when the engine switch is in "ACC" mode.)	Turn the engine switch "OFF" and close the driver's door.
	Turned the engine switch "OFF" while the driver's door is open	Close the driver's door.

n If the smart access system with push-button start does not operate properly

- 1 Locking and unlocking the doors and trunk: Use the mechanical key. (→P. 486)
- 1 Starting the engine: →P. 487

n When the electronic key battery is fully depleted

→P. 409

n Customization

Settings (e.g. smart access system with push-button start, anti-theft system) can be changed. (→P. 523)

n Certification for the smart access system with push-button start

- For vehicles sold in the U.S.A.

FCC ID: NI4TMLF-1

NOTE:

This device complies with Part 15 of the FCC Rules. Operation is subject to the following two conditions: (1) this device may not cause harmful interference, and (2) this device must accept any interference received, including interference that may cause undesired operation.

FCC WARNING:

Changes or modifications not expressly approved by the party responsible for compliance could void the user's authority to operate the equipment.

1-2. Opening, closing and locking the doors and trunk

► For vehicles sold in Canada

NOTE:

This device complies with RSS-210 of Industry Canada.

Operation is subject to the following two conditions: (1) this device may not cause interference, and (2) this device must accept any interference, including interference that may cause undesired operation of the device.

1

CAUTION

n Caution regarding interference with electronic devices

- 1** People with implanted pacemakers or cardiac defibrillators should keep away from the smart access system with push-button start antennas.
The radio waves may affect the operation of such devices.
- 1** Users of any electrical medical device other than implanted pacemakers and implanted cardiac defibrillators should consult the manufacturer of the device for information about its operation under the influence of radio waves.
Radio waves could have unexpected effects on the operation of such medical devices.

Before driving

1-2. Opening, closing and locking the doors and trunk

Wireless remote control

The wireless remote control can be used to lock and unlock the vehicle and the trunk from outside the vehicle.



- 1 Locks all doors
- 2 Unlocks all doors
- 3 Opens the windows and moon roof (push and hold)
- 4 Unlocks the trunk (push and hold)
- 5 Sounds alarm (push and hold) (→P. 55)

n 2-step unlocking function

When you push the **1** button, the driver's door is unlocked. Pushing the button again within 3 seconds unlocks the other doors.

n Operation indicator

Doors: A buzzer sounds and the emergency flashers flash to indicate that the doors have been locked/unlocked. (Locked: Once; Unlocked: Twice)

Trunk: A buzzer sounds to indicate that the trunk has been unlocked.

Windows and moon roof: A buzzer sounds when the windows and moon roof begin to open.

n Door lock buzzer

If a door is not fully closed, a buzzer sounds continuously if an attempt to lock the door is made. Fully close the door to stop the buzzer, and lock the vehicle once more.

n Security feature

→P. 10

n When the electronic key battery is fully depleted

→P. 12

1-2. Opening, closing and locking the doors and trunk

n **Conditions affecting operation**

→P. 7

n **Low battery**

If the wireless remote control does not function or if it only operates very close to the vehicle, the battery may be low. (→P. 409)

n **Customization**

Settings (e.g. 2-step unlocking function, trunk unlocking function) can be changed. (→P. 523)

n **Certification for wireless remote control**

► For vehicles sold in the U.S.A.

FCC ID: NI4TMLF-1

NOTE:

This device complies with Part 15 of the FCC Rules. Operation is subject to the following two conditions: (1) this device may not cause harmful interference, and (2) this device must accept any interference received, including interference that may cause undesired operation.

NOTICE:

This equipment has been tested and found to comply with the limits for a Class B digital device, pursuant to Part 15 of the FCC Rules. These limits are designed to provide reasonable protection against harmful interference in a residential installation. This equipment generates, uses and can radiate radio frequency energy and, if not installed and used in accordance with the instructions, may cause harmful interference to radio communications. However, there is no guarantee that interference will not occur in a particular installation. If this equipment does cause harmful interference to radio or television reception, which can be determined by turning the equipment off and on, the user is encouraged to try to correct the interference by one or more of the following measures:

- 1 Reorient or relocate the receiving antenna.
- 1 Increase the separation between the equipment and receiver.
- 1 Connect the equipment into an outlet on a circuit different from that to which the receiver is connected.
- 1 Consult the dealer or an experienced radio/TV technician for help.

1

Before driving

1-2. Opening, closing and locking the doors and trunk

FCC WARNING:

Changes or modifications not expressly approved by the party responsible for compliance could void the user's authority to operate the equipment.

n Certification for wireless remote control

► For vehicles sold in the Canada

NOTE:

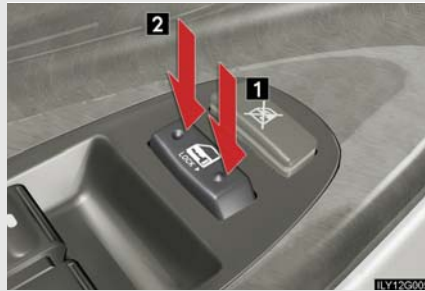
Operation is subject to the following two conditions: (1) this device may not cause interference, and (2) this device must accept any interference, including interference that may cause undesired operation of the device.

1-2. Opening, closing and locking the doors and trunk

Doors

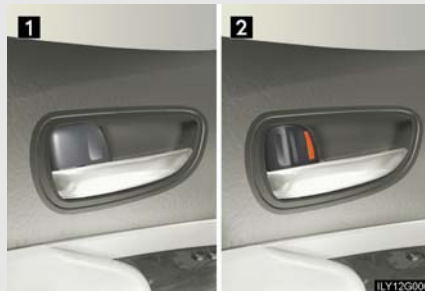
The vehicle can be locked and unlocked using the entry function, wireless remote control or door lock switch.

- n** Smart access system with push-button start
→P. 5
- n** Wireless remote control
→P. 14
- n** Door lock switch



- 1** Locks all doors
- 2** Unlocks all doors

- n** Inside lock button

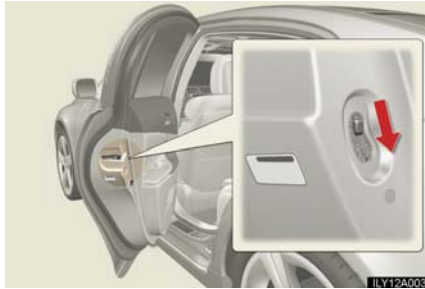


- 1** Locks the door
- 2** Unlocks the door

The front doors can be opened by pulling the inside handles even if the lock buttons are in the lock position.

1-2. Opening, closing and locking the doors and trunk

Rear door child-protector lock



The door cannot be opened from inside the vehicle when the locks are set.

These locks can be set to prevent children from opening the rear doors. Push down rear door switches to lock the rear doors.

Automatic door locking and unlocking systems

The following functions can be set or canceled:

Function	Operation
Shift position linked door locking function	Shifting the shift lever out of "P" locks all doors.
Shift position linked door unlocking function	Shifting the shift lever to "P" unlocks all doors.
Speed linked door locking function	All doors are locked when the vehicle speed is approximately 12 mph (20 km/h) or higher.
Driver's door linked door unlocking function	All doors are unlocked when the driver's door is opened within 10 seconds after turning the engine switch "OFF".

1-2. Opening, closing and locking the doors and trunk

n Setting and canceling the functions

To switch between setting and canceling, follow the procedure below:

STEP 1 Close all the doors and switch the engine switch to "IG-ON" mode. (Perform step 2 within 10 seconds.)

STEP 2 Shift the shift lever to "P" or "N", press and hold the driver's door lock switch (**1** or **2**) for 5 seconds then release.

The shift lever and switch positions corresponding to the desired function to be set or canceled are shown as follows.



Function	Shift lever position	Switch position
Shift position linked door locking function	"P"	1
Shift position linked door unlocking function		2
Speed linked door locking function	"N"	1
Driver's door linked door unlocking function		2

When the setting or canceling operation is complete, all doors are locked and then unlocked.

1
Before driving

1-2. Opening, closing and locking the doors and trunk

n Closing the front doors from outside with the inside lock button set in the locked position

The door cannot be locked if the engine switch is in "ACC" or "IG-ON" mode, or the electronic key is left in the vehicle. (However, depending on the key's location, the system may not be able to detect it. In these instances the door lock protection function will not operate properly.)

n Using the mechanical key

The doors can also be locked and unlocked with the mechanical key. (→P. 486)

n Customization

Settings (e.g. unlocking function using a key) can be changed. (→P. 523)

! CAUTION

n To prevent an accident

Observe the following precautions while driving the vehicle.
Failing to do so may result in a door opening and an occupant falling out, resulting in death or serious injury.

- I** Always use a seat belt.
- I** Always lock all doors.
- I** Ensure that all doors are properly closed.
- I** Do not pull the inside handle of the front door while driving.
- I** Set the rear door child protector locks when children are seated in the rear seat.

1-2. Opening, closing and locking the doors and trunk Trunk

The trunk can be opened using the trunk opener, entry function or wireless remote control.

- n Smart access system with push-button start
→P. 5
- n Wireless remote control
→P. 14
- n Trunk opener

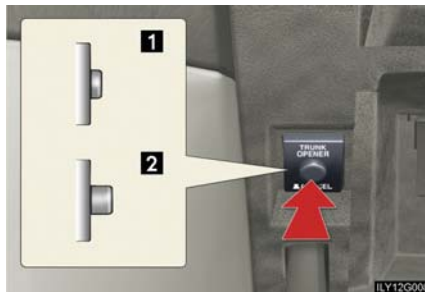


1 Open the trunk lid.

1-2. Opening, closing and locking the doors and trunk

Luggage security system

The trunk opener feature using the trunk opener switch, wireless remote control and smart access system with push-button start can be disabled by turning off a switch inside the glove box. This function allows you to keep valuables safety locked in the trunk when leaving a key with a parking attendant.



1 Enabled

2 Disabled

After turning off the trunk opener main switch, lock the glove box using the mechanical key. Take the mechanical key for your own use and provide the attendant with the electronic key only. (→P. 2)

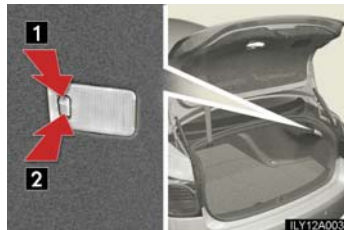
1-2. Opening, closing and locking the doors and trunk

n Trunk lid closer

In the event that the trunk lid is left slightly open (not latched properly), the trunk easy closer will automatically close it to the fully closed position.

n Trunk light

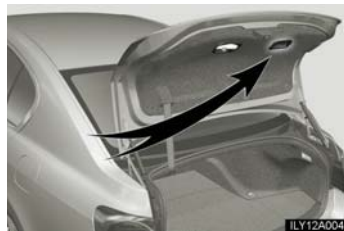
When the trunk light switch is set to ON, the trunk light turns on when the trunk is opened.



- 1 ON
- 2 OFF

1
Before driving

n Trunk handle



Use the trunk handle when closing the trunk.

n Internal trunk release lever



The trunk lid can be opened by pulling down on the glow-in-the-dark lever located on the inside of trunk lid.

The lever will continue to glow for some time after the trunk lid is closed.

n Using the mechanical key

The trunk can be also opened using the mechanical key. (→P. 486)

1-2. Opening, closing and locking the doors and trunk

CAUTION

n Caution while driving

Keep the trunk lid closed.

This not only keeps personal belongings from being thrown out, but also prevents exhaust gases from entering the vehicle.

n When children are in the vehicle

Never leave children unattended in the vehicle as they may lock themselves in the vehicle or trunk, which could cause the child to overheat or suffocate resulting in death or serious injury.

n When the trunk has not been fully closed

Be careful that your fingers do not get caught by the trunk lid when it is closing automatically.

NOTICE

n To avoid damage to the trunk lid closer

Do not apply excessive force when the closer is operating.