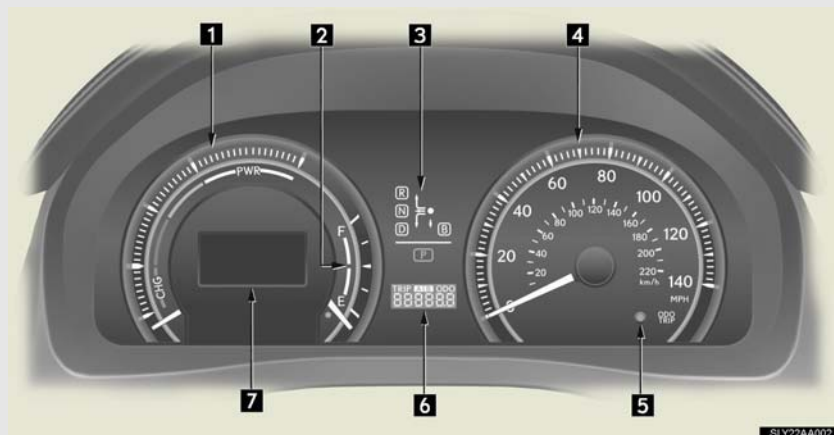


## 2-2. Instrument cluster

### Gauges and meters



The following gauges and meters and display illuminate when the “POWER” switch is in ON mode:

**1 Hybrid System Indicator**

Displays hybrid system output or regeneration level

**2 Fuel gauge**

Displays the quantity of fuel remaining in the tank

**3 Shift position indicator**

Displays the shift position

**4 Speedometer**

Displays the vehicle speed

**5 Odometer/trip meter display change button**

→P. 163

**6 Odometer and trip meter display**

Odometer: Displays the total distance that the vehicle has been driven

Trip meter: Displays the distance the vehicle has been driven since the meter was last reset. Trip meters “A” and “B” can be used to record and display different distances independently.

## Multi-information display

→P.169

## Changing the display



Switches between odometer and trip meter displays. When the trip meter is displayed, pressing and holding the button will reset the trip meter.

2

When driving

## Instrument panel light control

The brightness of the instrument panel lights can be adjusted.



1 Brighter

2 Darker

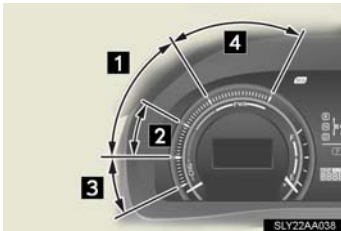
## n Instrument panel brightness adjustment

The instrument panel brightness levels when the tail lights are on and off can be adjusted. However, when the surroundings are bright (daytime, etc.) turning on the tail lights will not change the instrument panel brightness.

### n Limitations of brightness adjustment

The brightness of the instrument panel lights is automatically adjusted based on the light sensor detecting how bright the surroundings are. However, if the instrument panel brightness has been manually set to either the brightest or dimmest setting, the automatic adjustment will not be performed.

### n Hybrid System Indicator



- 1 Eco area  
Eco Driving Indicator Light comes on
- 2 Hybrid Eco area  
Eco Driving Indicator Light comes on
- 3 Charge area  
Eco Driving Indicator Light comes on
- 4 Power area  
Eco Driving Indicator Light turns off

- 1 By keeping the indicator needle within Eco area, environmentally-friendly driving can be achieved.

Hybrid Eco area shows that gasoline engine power is not being used very often.\*<sup>1</sup>

- 1 Charge area indicates regeneration\*<sup>2</sup> status. Regenerated energy will be used to charge the hybrid battery.

\*<sup>1</sup>: The gasoline engine will automatically stop and restart under various conditions.

\*<sup>2</sup>: When used in this manual, “regeneration” refers to the conversion of energy created by the movement of the vehicle into electrical energy.

### n Customization

Settings (e.g. Sensitivity of the ambient light sensor used for dimming the meter lights) can be changed. (Customizable features →P. 572)

### NOTICE

#### n To prevent damage to the hybrid system and its components

A high engine coolant temperature warning light (→P. 492) is installed instead of an engine coolant temperature gauge. If the high engine coolant temperature warning light illuminates or flashes, the vehicle may be overheating. Immediately stop the vehicle in a safe area (→P. 541).

## 2-2. Instrument cluster

### Indicators and warning lights

The indicator and warning lights on the instrument cluster and center panel inform the driver of the status of the vehicle's various systems.

#### Instrument cluster



#### Center panel (without a navigation system)



#### Center panel (with a navigation system)



**n Indicators**

The indicators inform the driver of the operating state of the vehicle's various systems.



Turn signal indicator  
(→P. 162)



(U.S.A.)

Headlight indicator  
(→P. 183)



(Canada)

Tail light indicator  
(→P. 183)



Headlight high beam indicator  
(→P. 185)



(if equipped)

Automatic High Beam indicator  
(→P. 188)



Front fog light indicator  
(→P. 194)



"READY" indicator  
(→P. 147)



EV drive mode indicator  
(→P. 152)



\*1

Eco Driving Indicator  
Light (→P. 138)



"ECO MODE" indicator  
(→P. 158)



"PWR MODE" indicator  
(→P. 158)



Cruise control indicator  
(→P. 201, 205)



(if equipped)

Radar cruise control indicator  
(→P. 205)



(if equipped)

"LKA" indicator  
(→P. 218)



"SET" indicator  
(→P. 201, 205)



(if equipped)

Intuitive parking assist indicator (Refer to "Navigation System Owner's Manual".)



(if equipped)

"AFS OFF" indicator  
(→P. 185)

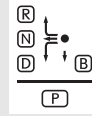


\*1, 2

Slip indicator  
(→P. 226, 230)



\*1  
VSC OFF indicator  
(→P. 226)



Shift position indicators  
(→P. 156)



\*1, 3  
"PCS" indicator  
(→P. 233)  
(if equipped)



\*1  
SRS airbag on-off  
indicator (→P. 115)

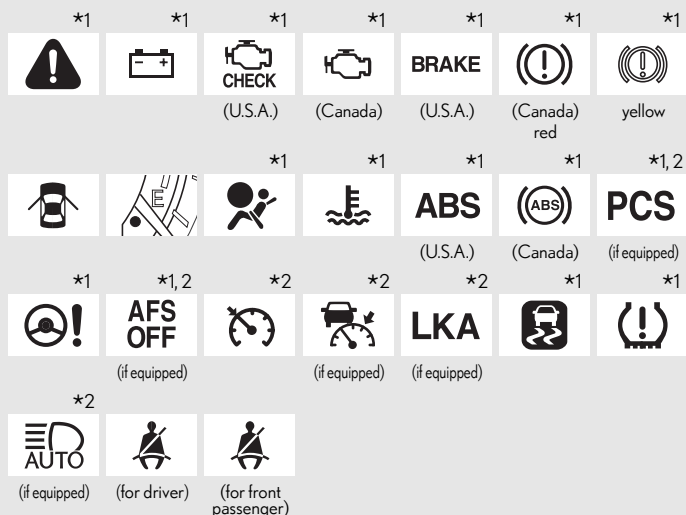
\*1: These lights turn on when the "POWER" switch is turned to the ON mode to indicate that a system check is being performed. They will turn off after the hybrid system is on, or after a few seconds. There may be a malfunction in a system if a light does not come on, or if the lights do not turn off. Have the vehicle inspected by your Lexus dealer.

\*2: The indicator flashes to indicate that the system is operating.

\*3: The indicator flashes faster than usual to indicate that the system is operating.

## n Warning lights

Warning lights inform the driver of malfunctions in any of the vehicle's systems. (→P. 492)



\*1: These lights turn on when the “POWER” switch is turned to ON mode to indicate that a system check is being performed. They will turn off after the hybrid system is on, or after a few seconds. There may be a malfunction in a system if a light does not come on, or if the lights do not turn off. Have the vehicle inspected by your Lexus dealer.

\*2: The indicator flashes to indicate a malfunction.

**CAUTION**

**n** If a safety system warning light does not come on

Should a safety system light such as the ABS and SRS airbag warning light not come on when you start the hybrid system, this could mean that these systems are not available to help protect you in an accident, which could result in death or serious injury. Have the vehicle inspected by your Lexus dealer immediately if this occurs.

# Multi-information display

The multi-information display presents the driver with a variety of driving-related data including the current outside air temperature.

### n Multi-information switches



#### 1 Menu switch

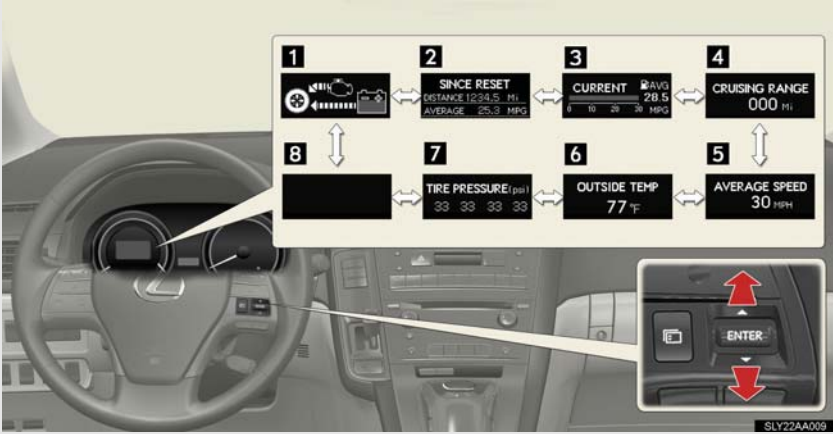
Changes modes to electronic feature control mode (if equipped), customization mode or back to normal display mode.

#### 2 “ENTER” switch

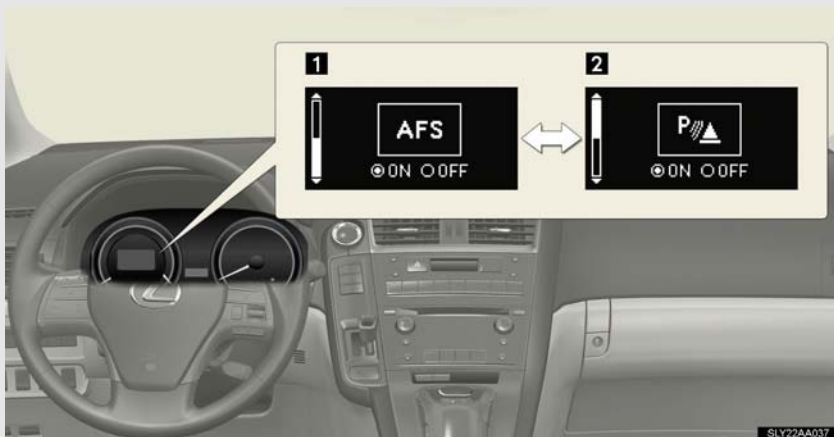
Changes trip information items. This switch is also used to turn on/off electronic feature controls and to change customization settings.



n Display contents



| Trip information contents   | Switching display items                      |
|---|--|
| 1 Energy monitor  | Press the “ENTER” switch upward or downward. |
| 2 Total distance/Total average fuel consumption                     |  |
| 3 Current fuel consumption/Average fuel consumption after refueling |  |
| 4 Cruising range  |  |
| 5 Average vehicle speed   |  |
| 6 Outside temperature   |  |
| 7 Tire inflation pressure   |  |
| 8 Blank   |  |



| Electronic feature control contents      | Setting electronic feature controls          |
|--|--|
| 1 AFS (if equipped)                      | →P. 185                                      |
| 2 Intuitive parking assist (if equipped) | Refer to “Navigation System Owner’s Manual”. |

Display order may vary depending on vehicle condition.

| Other contents   | Details  |
|--|--|
| Customization (→P. 572)                                      | Settings of functions such as the door lock and light illumination time can be changed |
| Dynamic radar cruise control (if equipped) (→P. 205)         | Automatically displayed when using the dynamic radar cruise control                    |
| LKA (Lane Keeping Assist) (if equipped) (→P. 217)            | Automatically displayed when using the lane keeping assist                             |
| PCS (Pre-Collision System) (if equipped) (→P. 232, 502, 505) | Automatically displayed if there is a possibility of collision.                        |

| Other contents            | Details   |
|---------------------------|---|
| Warning message (→P. 501) | Automatically displayed when a malfunction occurs in any of the vehicle's systems |

**Trip information**

**n Energy monitor**

Displays the status of the hybrid system (→P. 32)

**n Total distance/Total average fuel consumption**

Displays the total distance and average fuel consumption since the last reset.

Press the “ENTER” switch for 1 second or more when the total distance and the average fuel consumption is displayed.

“Past Record” screen on the navigation system (if equipped) will also be reset. (→P. 36)

**n Current fuel consumption/Average fuel consumption after refueling**

Displays the instant fuel consumption and average fuel consumption after refueling.

**n Cruising range**

Displays the estimated maximum distance that can be driven with the quantity of fuel remaining.

- This distance is computed based on your average fuel consumption. As a result, the actual distance that can be driven may differ from that displayed.
- When only a small amount of fuel is added to the tank, the display may not be updated.

**n Average vehicle speed**

Displays the average vehicle speed since the function was reset

The function can be reset by pushing the “ENTER” switch for longer than 1 second when the average vehicle speed is displayed.

**n Outside temperature**

Displays the outside temperature

**n Tire inflation pressure**

Displays inflation pressure of each tire. There is no correlation between the order of the displayed values and the tire positions.

It may take a few minutes to display the tire inflation pressure after the “POWER” switch is turned to ON mode. It may also take a few minutes to display the tire inflation pressure after the inflation pressure has been adjusted.

2

When driving

**n Electronic feature control can be turned on/off when**

The “POWER” switch is in ON mode.

**n Conditions for ending electronic feature control**

In the following situations, the electronic feature control will end:

- 1 The menu switch is pressed
- 1 The radar cruise control is operated (if equipped)
- 1 The lane keeping assist is operated (if equipped)
- 1 Intuitive parking assist starts operating (if equipped)
- 1 No action is performed for some time after the electronic feature control screen is displayed
- 1 A warning message appears after the electronic feature control screen is displayed

**n Outside temperature display**

In the following situations, the correct outside temperature may not be displayed, or the display may take longer than normal to change.

- 1 When stopped, or driving at low speeds (less than 15 mph [25 km/h])
- 1 When the outside temperature has changed suddenly (at the entrance/exit of a garage, tunnel, etc.)

**n When disconnecting and reconnecting battery terminals**

The following information will be reset:

- 1 Total distance/Total average fuel consumption
- 1 Average fuel consumption after refueling
- 1 Cruising range
- 1 Average vehicle speed

**n Customization**

Settings (e.g. available languages) can be changed.  
(Customizable features→P. 572)

**⚠ CAUTION**

**n Caution while driving**

When operating the electronic feature control while driving, take extra notice of the vehicle's surrounding area.

**⚠ NOTICE**

**n The multi-information display at low temperatures**

Allow the interior of the vehicle to warm up before using the liquid crystal information display. At extremely low temperatures, the information display monitor may respond slowly, and display changes may be delayed.

## 2-2. Instrument cluster

### Head-up display\*

The head-up display can be used to project vehicle speed and other information onto the windshield.



#### 1 Head-up display

Display brightness will change automatically according to the brightness of the surrounding area.

#### 2 Turn-by-turn navigation switch

Used to turn the turn-by-turn navigation on or off.

#### 3 HUD (Head-up Display) main switch

#### 4 HUD (Head-up Display) contrast adjustment switch

Used to adjust the display brightness to the desired level.

#### 5 HUD (Head-up Display) position adjustment switch

2

When driving

\*: If equipped

### **n Head-up display contents**

In addition to the vehicle speed display (standard display), the following information will be displayed:

#### 1 Vehicle speed display (standard display)



Displays the vehicle speed.

#### 1 Audio display



Displays audio information for approximately 3 seconds when the audio system is operated

#### 1 Dynamic radar cruise control (if equipped)



Displays the approach warning message (→P. 505)

#### 1 PCS (Pre-Collision System) (if equipped)



Indicates that there is a possibility of collision. (→P. 505)

#### 1 LKA (Lane Keeping Assist) (if equipped)



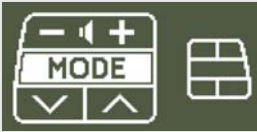
Displays a warning message that alerts the driver of a deviation from the lane through use of the lane departure warning function. (→P. 505)

## 1 Turn-by-turn navigation



Displays a notification of upcoming intersections during navigation system route guidance

## 1 Touch tracer display



Displays the switch operation status when the steering switch is operated.

## HUD (Head-up Display) main switch



Pressing the switch turns the head-up display on/off and changes the vehicle speed display units as follows:

### Vehicles sold in the U.S.A.

OFF → ON (mph) → ON (km/h)  
→ OFF

### Except vehicles sold in the U.S.A.

OFF → ON (km/h) → ON (mph)  
→ OFF

When the head-up display is on, a prolonged press will turn the touch tracer display or audio display ON/OFF. (→P.181)



Turn-by-turn navigation switch



Pressing the switch turns the turn-by-turn navigation on/off, when the head-up display is on.

The switch indicator illuminates while the turn-by-turn navigation is active.

Display adjustment

The display position and brightness of the head-up display can be changed when necessary.

n Adjusting display contrast



- 1 Brighter
- 2 Darker

n Adjusting display position



- 1 Higher
- 2 Lower

## Touch tracer display function

The switch operation is shown on the head-up display when the steering switch provided on the steering wheel is operated. The driver can operate the steering switch without seeing it on the steering wheel.



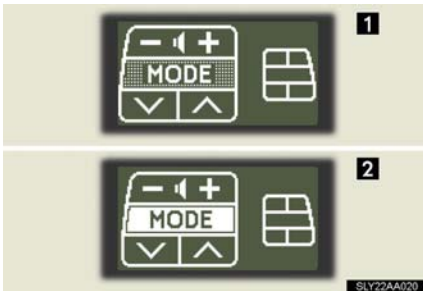
The display will change in response to steering switch operation.

Touching the steering switch will cause the touch tracer display to appear on the head-up display.

2

When driving

### n Touch tracer display



- 1 Only the switch that is being operated is highlighted, and thus, the driver can perceive which button is being operated.
- 2 The applicable switch displayed on the head-up display will change in response to the switch operation.

Taking your finger off the steering switch returns the display to the vehicle speed indication.

It is possible to turn the touch tracer display ON/OFF as necessary. (→P. 181)

### Turn-by-turn navigation



When the vehicle approaches an intersection, the direction the vehicle should go is guided by the arrow.

When the vehicle approaches an intersection, the route guidance will start and the distance\* to the intersection will also be displayed.

The animation guidance changes according to the vehicle conditions (running or stopped).

\*:The distance decreases in increments of 50 yards and the distance indication will disappear when the vehicle passes through the intersection.

## Display customization

The touch tracer display and audio display can be hidden (not display) if desired.

### n Touch tracer display



Pressing and holding the HUD (Head-up Display) main switch for more than 2 seconds changes the display to touch tracer display ON/OFF mode. Press the HUD (Head-up Display) main switch to select ON or OFF.

Customization can be performed when the head-up display is on and the vehicle is traveling at less than 5 mph (8 km/h).

### n Audio display



With the touch tracer display ON/OFF selection mode displayed, press and hold HUD (Head-up Display) main switch for more than 2 seconds again to enter audio display ON/OFF selection mode. ON or OFF can be selected by pressing HUD (Head-up Display) main switch.

Customization can be performed when the head-up display is on and the vehicle is traveling at less than 5 mph (8 km/h).

### n Brightness of the head-up display

The headlight control sensor detects the brightness of the area surrounding the head-up display and adjusts the brightness accordingly. (→P. 186)

### n Head-up display

The head-up display may seem dark and hard to see when viewed through sunglasses, especially polarized sunglasses.

Adjust the brightness of the head-up display or remove your sunglasses.

## ⚠ CAUTION

### n Before using the head-up display

Check that the position and brightness of the head-up display image does not interfere with safe driving. Incorrect adjustment of the image's position or brightness may obstruct the driver's view and lead to an accident, resulting in death or serious injury.

## ⚠ NOTICE

### n To prevent damage to components



- 1 Do not place any drinks near the head-up display projector. If the projector gets wet, electrical malfunctions may result.
- 1 Do not place anything on or put stickers onto the head-up display projector. Doing so could interrupt head-up display indications.
- 1 Do not touch the inside of the head-up display projector or thrust sharp edges or the like into the projector. Doing so could cause mechanical malfunctions.