

Sun visors

To set the visor in the forward position, flip it down.

2 To set the visor in the side position, flip down, unhook, and swing it to the side.

3 To use the side extender, place the visor in the side position, then slide it backward.

3-7. Other interior features

Vanity mirrors

Slide the cover to open.

The light turns on when the cover is opened.



NOTICE

n To prevent 12-volt battery discharge

Do not leave the vanity lights on for extended periods while the hybrid system is off.

Clock

Vehicles with a navigation system

Refer to the “Navigation System Owner’s Manual”.

Vehicles without navigation system



- 1 Rounds to the nearest hour*
- 2 Adjusts the hours
- 3 Adjusts the minutes

*: e.g. 1:00 to 1:29 → 1:00
1:30 to 1:59 → 2:00

n The clock is displayed when

The “POWER” switch is in ACCESSORY or ON mode.

3-7. Other interior features

Power outlets

The power outlet can be used for 12 V accessories that run on less than 10 A.



n The power outlet can be used when

The "POWER" switch is in ACCESSORY or ON mode.

NOTICE

n To avoid damaging the power outlets

Close the power outlet lid when the power outlet is not in use.

Foreign objects or liquids that enter the power outlet may cause a short circuit.

n To prevent blown fuse

Do not use an accessory that uses more than 12 V 10 A.

n To prevent 12-volt battery discharge

Do not use the power outlet longer than necessary when the hybrid system is off.

Seat heaters and ventilators*

The seat heaters and ventilators heat the seats and maintain good airflow by blowing air from the seats.

Seat heaters



1 Turns the seat heater on

The indicator light comes on.
The higher the number is, the warmer the seat becomes.

Seat heaters/ventilators



1 Turns the seat heater on

The indicator light (green) comes on.
The higher the number is, the warmer the seat becomes.

2 Blows air from the seat

The indicator light (green) comes on.
The higher the number is, the stronger the airflow becomes.

n The seat heaters/ventilators can be used when

The "POWER" switch is in ON mode.

n When not in use

Set the knob at "0". The indicator light turns off.

*: If equipped

CAUTION

n Burns

- I** Use caution when seating the following persons in a seat with the seat heater on to avoid the possibility of burns:
 - Babies, small children, the elderly, the sick and the physically challenged
 - Persons with sensitive skin
 - Persons who are fatigued
 - Persons who have taken alcohol or drugs that induce sleep (sleeping drugs, cold remedies, etc.)
- I** Do not cover the seat with anything when using the seat heater.
Using the seat heater with a blanket or cushion increases the temperature of the seat and may lead to overheating.
- I** Do not use the seat heater more than necessary. Doing so may cause minor burns or overheating.

NOTICE

n To prevent damage to the seat heaters/ventilators

Do not put heavy objects that have an uneven surface on the seat and do not stick sharp objects (needles, nails, etc.) into the seat.

n To prevent 12-volt battery discharge

Turn the seat heaters/ventilators off when the hybrid system is off.

Armrest

Fold down the armrest for use.



NOTICE

n To prevent damage to the armrest

Do not apply too much load on the armrest.

3-7. Other interior features

Rear sunshade*

The rear sunshade can be raised and lowered by operating the button shown below.



Extends/retracts the rear sunshade.

n The rear sunshade can be used when

The "POWER" switch is in ON mode.

n Operating the rear sunshade after the hybrid system is turned off

The rear sunshade can be operated for approximately 1 minute even after the "POWER" switch is turned to ACCESSORY mode or turned off.

n Reverse operation feature

To ensure adequate rear visibility, the rear sunshade automatically lowers when the shift lever is shifted to R.

*: If equipped

However, the rear sunshade is raised again if any of the following occurs:

- 1 The button is pressed again.
- 1 The shift lever is shifted to P.
- 1 The shift lever is shifted out of P or R, and the vehicle reaches a speed of 9 mph (15 km/h).

If the hybrid system is turned off when the rear sunshade has been lowered due to the reverse operation feature, it will not be raised even when the hybrid system is turned on again and the vehicle reaches a speed of 9 mph (15 km/h). To raise the sunshade again, press the button.

n When the reverse operation feature does not operate

The rear sunshade may not lower or rise automatically. In this case, press the switch to lower or raise the rear sunshade.

n Customization

Settings (e.g. time elapsed before the reverse operation) can be changed.
(Customizable features: →P. 572)

⚠ CAUTION

n When the rear sunshade is being raised or lowered

Do not place fingers or other objects in the fastener section or in the opening.
They may get caught, causing injury.

⚠ NOTICE

n To prevent 12-volt battery discharge

Do not operate the rear sunshade when the hybrid system is off.

n To ensure normal operation of the sunshade

Observe the following precautions:

- 1 Do not place excessive load on the motor or other components.
- 1 Do not place objects where they may hinder opening and closing operations.
- 1 Do not attach items to the rear sunshade.
- 1 Keep the opening clean and clear of obstructions.
- 1 Do not operate the rear sunshade continuously for long periods of time.

3-7. Other interior features

Floor mat

Securely place a mat that matches the size of the space on the carpet.



Secure the floor mat using the hooks provided.

CAUTION

n When inserting the floor mat

Observe the following precautions.

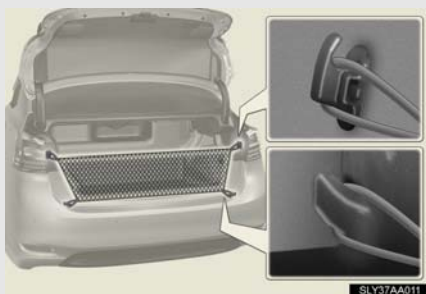
Failure to do so may result in the floor mat slipping and interfering with the movement of the pedals during driving, resulting in an accident.

- I** Make sure the floor mat is properly placed on the vehicle carpet and the correct side faces upward.
- I** Do not place floor mats on top of existing mats.

3-7. Other interior features

Trunk compartment features

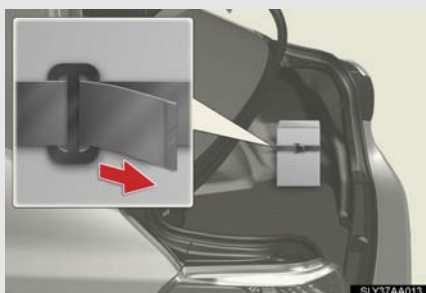
n Cargo net



n Grocery bag hooks



n First-aid kit storage belt



Secure the first-aid kit.

n Luggage mat



Pull the lever upward to lift up the luggage mat.



The lever can be hooked on the edge of the trunk.

⚠ NOTICE

n When closing the trunk

Do not leave the luggage mat lever hooked on the edge of the trunk as the luggage mat may get damaged.

3-7. Other interior features

Garage door opener

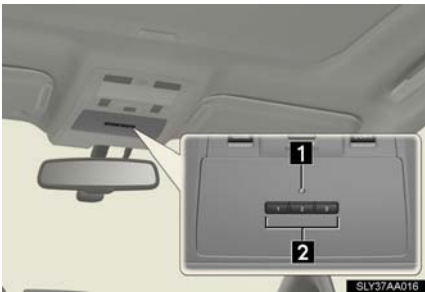
The garage door opener can be programmed to operate garage doors, gates, entry doors, door locks, home lighting systems, security systems, and other devices.

The garage door opener (HomeLink® Universal Transceiver) is manufactured under license from HomeLink®.

Programming the HomeLink® (for U.S.A. owners)

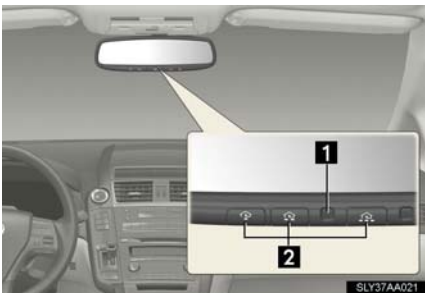
The HomeLink® compatible transceiver in your vehicle has 3 buttons which can be programmed to operate 3 different devices. Refer to the programming method below appropriate for the device.

Overhead console type



- 1 Indicator light
- 2 Buttons

Inside rear view mirror type



- 1 Indicator light
- 2 Buttons

n Programming HomeLink®

Overhead console type



Point the remote control transmitter for the device 1 to 3 in. (25 to 75 mm) from the HomeLink® buttons.

Keep the HomeLink® indicator light in view while programming.

Inside rear view mirror type



Point the remote control transmitter for the device 1 to 3 in. (25 to 75 mm) from the HomeLink® buttons.

Keep the HomeLink® indicator light in view while programming.

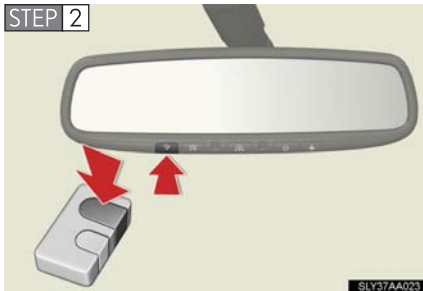
Overhead console type



Press and hold one of the HomeLink® buttons and the transmitter button. When the HomeLink® indicator light changes from a slow to a rapid flash, you can release both buttons.

If the HomeLink® indicator light comes on but does not flash, or flashes rapidly for 2 seconds and remains lit, the HomeLink® button is already programmed. Use the other buttons or follow the "Reprogramming a HomeLink® button" instructions. (→P. 388)

Inside rear view mirror type



Press and hold one of the HomeLink[®] buttons and the transmitter button. When the HomeLink[®] indicator light changes from a slow to a rapid flash after 20 seconds, release both buttons.

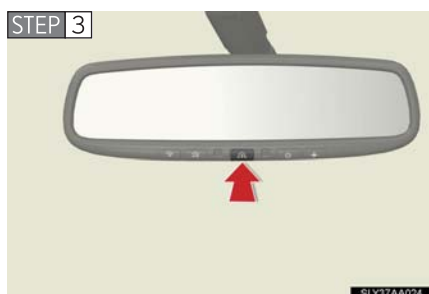
Overhead console type



Test the HomeLink[®] operation by pressing the newly programmed button.

If a HomeLink[®] button has been programmed for a garage door, check to see if the garage door opens and closes. If the garage door does not operate, see if your garage transmitter is of the rolling code type. Press and hold the programmed HomeLink[®] button. The remote control transmitter is of the rolling code type if the HomeLink[®] indicator light flashes rapidly for 2 seconds and then remains lit. If your transmitter is the rolling code type, proceed to the heading "Programming a rolling code system".

Inside rear view mirror type



Test the HomeLink[®] operation by pressing the newly programmed button.

If a HomeLink[®] button has been programmed for a garage door, check to see if the garage door opens and closes. If the garage door does not operate, see if your garage transmitter is of the rolling code type. Press and hold the programmed HomeLink[®] button. The remote control transmitter is of the rolling code type if the HomeLink[®] indicator light flashes rapidly for 2 seconds and then remains lit. If your transmitter is the rolling code type, proceed to the heading "Programming a rolling code system".

STEP 4 Repeat the steps above to program another device for any of the remaining HomeLink[®] buttons.

n Programming a rolling code system (for U.S.A. owners)

If your device is rolling code equipped, follow the steps under the heading "Programming HomeLink[®]" before proceeding with the steps listed below.

STEP 1 Locate the training button on the ceiling mounted garage door opener motor. The exact location and color of the button may vary by brand of garage door opener motor.

Refer to the operation manual supplied with the garage door opener for the location of the training button.

STEP 2 Press the training button.

Following this step, you have 30 seconds in which to initiate step 3 below.

- STEP 3** Press and hold the vehicle's programmed HomeLink[®] button for 2 seconds and release it. Repeat this step once again. The garage door may open.

If the garage door opens, the programming process is complete. If the door does not open, press and release the button a third time. This third press and release will complete the programming process by opening the garage door.

The ceiling mounted garage door opener motor should now recognize the HomeLink[®] signal and operate the garage door.

- STEP 4** Repeat the steps above to program another rolling code system for any of the remaining HomeLink[®] buttons.

n Programming an entry gate (for U.S. owners)/Programming a devices in the Canadian market

- STEP 1** Place the remote control transmitter 1 to 3 in. (25 to 75 mm) away from the HomeLink[®] buttons.

Keep the HomeLink[®] indicator light in view while programming.

- STEP 2** Press and hold the selected HomeLink[®] button.

- STEP 3** Repeatedly press and release (cycle) the remote control transmitter for 2 seconds each until step 4 is completed.

- STEP 4** When the HomeLink[®] indicator light starts to flash rapidly, release the buttons.

- STEP 5** Test the HomeLink[®] operation by pressing the newly programmed button. Check to see if the gate/device operates correctly.

- STEP 6** Repeat the steps above to program another device for any of the remaining HomeLink[®] buttons.

n Programming other devices

To program other devices such as home security systems, home door locks and lighting, contact your Lexus dealer for assistance.

n Reprogramming a button

The individual HomeLink[®] buttons cannot be erased but can be reprogrammed. To reprogram a button, follow the "Reprogramming a HomeLink[®] button" instructions.

Operating HomeLink®

Press the appropriate HomeLink® button. The HomeLink® indicator light should come on.

The HomeLink® compatible transceiver in your vehicle continues to send a signal for up to 20 seconds as long as the button is pressed.

Reprogramming a HomeLink® button

Press and hold the desired HomeLink® button. After 20 seconds, the HomeLink® indicator light will start flashing slowly. Next, while still pressing and holding the HomeLink® button, press and hold the button on the transmitter until the HomeLink® indicator light changes from a slow to a rapid flash.

Erasing the entire HomeLink® memory (all three programs)

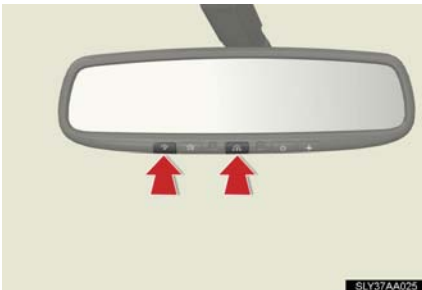
Overhead console type



Press and hold the 2 outside buttons for 10 seconds until the indicator light flashes.

If you sell your vehicle, be sure to erase the programs stored in the HomeLink® memory.

Inside rear view mirror type



Press and hold the 2 outside buttons for 20 seconds until the indicator light flashes.

If you sell your vehicle, be sure to erase the programs stored in the HomeLink® memory.

n Before programming

- 1 Install a new battery in the remote control transmitter.
- 1 The battery side of the remote control transmitter must be pointed away from the HomeLink[®] button.

n Certification for the garage door opener

For vehicles sold in the U.S.A.

Overhead console type

FCC ID: CB2070AHL4

Inside rear view mirror type

FCC ID: NZLZTVHL3

NOTE:

This device complies with Part 15 of the FCC Rules.

Operation is subject to the following two conditions: (1) this device may not cause harmful interference, and (2) this device must accept any interference received, including interference that may cause undesired operation.

FCC WARNING:

Changes or modifications not expressly approved by the party responsible for compliance could void the user's authority to operate the equipment

For vehicles sold in Canada

NOTE:

Operation is subject to the following two conditions: (1) this device may not cause interference, and (2) this device must accept any interference, including interference that may cause undesired operation of the device.

n When support is necessary

Visit on the web at www.homelink.com or call 1-800-355-3515.

CAUTION

n When programming a garage door or other remote control device

The garage door or other device may operate, so ensure people and objects are out of danger to prevent potential harm.

n Conforming to federal safety standards

Do not use the HomeLink[®] compatible transceiver with any garage door opener or device that lacks safety stop and reverse features as required by federal safety standards.

This includes any garage door that cannot detect an interfering object. A door or device without these features increases the risk of death or serious injury.

Compass*

The compass on the inside rear view mirror indicates the direction in which the vehicle is heading.

n Operation



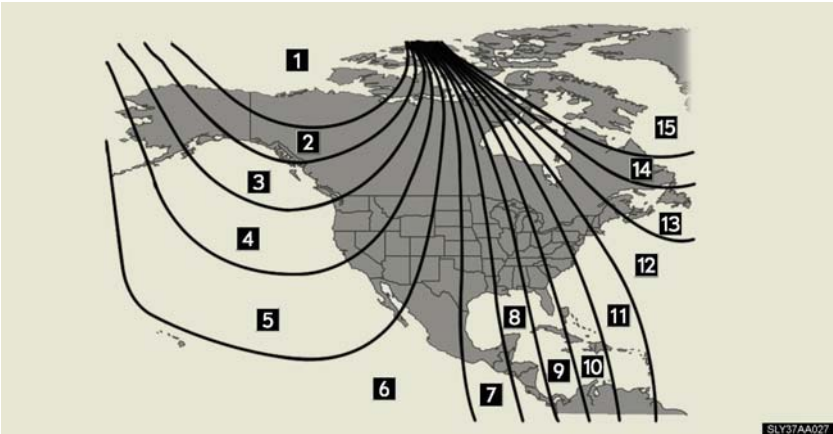
To turn the compass on or off, press the button for more than 3 seconds.

n Displays and directions

Display	Direction
"N"	North
"NE"	Northeast
"E"	East
"SE"	Southeast
"S"	South
"SW"	Southwest
"W"	West
"NW"	Northwest

*: If equipped

Calibrating the compass

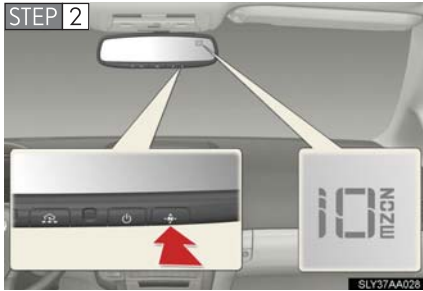


The direction display deviates from the true direction determined by the earth’s magnetic field. The amount of deviation varies depending on the geographic position of the vehicle.

If you cross over one of the map boundaries shown in illustration, the compass will deviate.
To obtain higher precision or perfect calibration, refer to “Deviation calibration”.

n Deviation calibration

STEP 1 Stop the vehicle in a place where it is safe to drive in a circle.



Press and hold the switch.

A number (1 to 15) appears on the compass display.

STEP 3 Referring to the map above, press the switch to select the number of the zone you are in.

If the direction is displayed several seconds after adjustment, the calibration is complete.

n Circling calibration



If "CAL" appears on the display, drive the vehicle at 5 mph (8 km/h) or less in a circle until a direction is displayed.

If there is not enough space to drive in a circle, drive around the block until a direction is displayed.

n Conditions unfavorable to correct operation

The compass may not show the correct direction in the following conditions:

- 1 The vehicle is stopped immediately after turning.
- 1 The vehicle is on an inclined surface.
- 1 The vehicle is in a place where the earth's magnetic field is subject to interference by artificial magnetic fields (underground car park/parking lot, under a steel tower, between buildings, roof car park/parking lot, near an intersection, near a large vehicle, etc.).
- 1 The vehicle has become magnetized. (There is a magnet or metal object near the inside rear view mirror.)
- 1 The battery has been disconnected.
- 1 A door is open.

CAUTION

n While driving the vehicle

Do not adjust the display. Adjust the display only when the vehicle is stopped.

n When doing the circling calibration

Secure a wide space, and watch out for people and vehicles in the vicinity. Do not violate any local traffic rules while performing circling calibration.

NOTICE

n To avoid compass malfunctions

Do not place magnets or any metal objects near the inside rear view mirror. Doing this may cause the compass sensor to malfunction.

n To ensure normal operation of the compass

- 1 Do not perform a circling calibration of the compass in a place where the earth's magnetic field is subject to interference by artificial magnetic fields.
- 1 During calibration, do not operate electric systems (moon roof, power windows, etc.) as they may interfere with the calibration.

Safety Connect

Safety Connect is a subscription-based telematics service that uses Global Positioning System (GPS) data and embedded cellular technology to provide safety and security features to subscribers. Safety Connect is supported by Lexus' designated response center, which operates 24 hours per day, 7 days per week.

Safety Connect service is available by subscription on select, telematics hardware-equipped vehicles.

By using the Safety Connect service, you are agreeing to be bound by the Telematics Subscription Service Agreement and its Terms and Conditions, as in effect and amended from time to time, a current copy of which is available at Lexus.com. All use of the Safety Connect service is subject to such then-applicable Terms and Conditions.

n System components



- 1 Microphone
- 2 "SOS" button
- 3 LED light indicators

n Services

Subscribers have the following Safety Connect services available:

1 Automatic Collision Notification*

Helps drivers receive necessary response from emergency service providers. (→P. 398)

*: U.S. Patent No. 7,508,298 B2

1 Stolen Vehicle Location

Helps drivers in the event of vehicle theft. (→P. 398)

1 Emergency Assistance Button (SOS)

Connects drivers to response-center support. (→P. 398)

1 Roadside Assistance

Provides drivers various on-road assistance. (→P. 398)

n Subscription

After you have signed the Telematics Subscription Service Agreement and are enrolled, you can begin receiving services.

A variety of subscription terms is available for purchase. Contact your Lexus dealer, call 1-800-25-LEXUS (1-800-255-3987) or push the “SOS” button in your vehicle for further subscription details.

n Safety Connect Services Information

- 1 Phone calls using the vehicles Bluetooth® technology will not be possible during Safety Connect.
- 1 Safety Connect is available beginning Fall 2009 on select Lexus models. Contact with the Safety Connect response center is dependent upon the telematics device being in operative condition, cellular connection availability, and GPS satellite signal reception, which can limit the ability to reach the response center or receive emergency service support. Enrollment and Telematics Subscription Service Agreement required. A variety of subscription terms is available; charges vary by subscription term selected.
- 1 Safety Connect services will function in the United States, including Hawaii and Alaska, and in Canada. The services will not function outside of the United States in countries other than Canada. For details about the service, contact your Lexus dealer.
- 1 Safety Connect services are not subject to section 255 of the Telecommunications Act and the device is not TTY compatible.

n Languages

The Safety Connect response center will offer support in multiple languages. The Safety Connect system will offer voice prompts in English and Spanish. Please indicate your language of choice when enrolling.

n When contacting the response center

You may be unable to contact the response center if the network is busy.

Safety Connect LED light Indicators

When the “POWER” switch is turned to ON mode, the red indicator light comes on for 2 seconds then turns off. Afterward, the green indicator light comes on, indicating that the service is active.

The following indicator light patterns indicate specific system usage conditions:

- 1 Green indicator light on = Active service
- 1 Green indicator light flashing = Safety Connect call in process
- 1 Red indicator light (except at vehicle start-up) = System malfunction (contact your Lexus dealer)
- 1 No indicator light (off) = Safety Connect service not active

Safety Connect services

n Automatic Collision Notification

In case of either airbag deployment or severe rear-end collision, the system is designed to automatically call the response center. The responding agent receives the vehicle's location and attempts to speak with the vehicle occupants to assess the level of emergency. If the occupants are unable to communicate, the agent automatically treats the call as an emergency, contacts the nearest emergency services provider to describe the situation, and requests that assistance be sent to the location.

n Stolen Vehicle Location

If your vehicle is stolen, Safety Connect can work with local authorities to assist them in locating and recovering the vehicle. After filing a police report, call the Safety Connect response center at 1-800-25-LEXUS (1-800-255-3987) and follow the prompts for Safety Connect to initiate this service.

In addition to assisting law enforcement with recovery of a stolen vehicle, Safety-Connect-equipped vehicle location data may, under certain circumstances, be shared with third parties to locate your vehicle. Further information is available at Lexus.com.

n Emergency Assistance Button (“SOS”)

In the event of an emergency on the road, push the “SOS” button to reach the Safety Connect response center. The answering agent will determine your vehicle’s location, assess the emergency, and dispatch the necessary assistance required.

If you accidentally press the “SOS” button, tell the response-center agent that you are not experiencing an emergency.

n Roadside Assistance

Subscribers can press the “SOS” button to reach a Safety Connect response-center agent, who can help with a wide range of needs, such as: towing, flat tire, fuel delivery, etc. For a description of the Roadside Assistance services and their limitations, please see the Safety Connect Terms and Conditions, which are available at Lexus.com.

Safety information for Safety Connect

Important! Read this information before using Safety Connect.

n Exposure to radio frequency signals

The Safety Connect system installed in your vehicle is a low-power radio transmitter and receiver. It receives and also sends out radio frequency (RF) signals.

In August 1996, the Federal Communications Commission (FCC) adopted RF exposure guidelines with safety levels for mobile wireless phones. Those guidelines are consistent with the safety standards previously set by the following U.S. and international standards bodies.

- 1 ANSI (American National Standards Institute) C95.1 [1992]
- 1 NCRP (National Council on Radiation Protection and Measurement) Report 86 [1986]
- 1 ICNIRP (International Commission on Non-Ionizing Radiation Protection) [1996]

Those standards were based on comprehensive and periodic evaluations of the relevant scientific literature. Over 120 scientists, engineers, and physicians from universities, and government health agencies and industries reviewed the available body of research to develop the ANSI Standard (C95.1).

The design of Safety Connect complies with the FCC guidelines in addition to those standards.

n License

Licensed by QUALCOMM Incorporated under one or more of the following United States Patents and/or their counterparts in other nations:

4,901,307 5,490,165 5,056,109 5,504,773 5,101,501
5,506,865 5,109,390 5,511,073 5,228,054 5,535,239
5,267,261 5,544,196 5,267,262 5,568,483 5,337,338
5,600,754 5,414,796 5,657,420 5,416,797 5,659,569
5,710,784 5,778,338