



List of Warning/Indicator Lights

Stop the vehicle immediately. Continuing to drive the vehicle may be dangerous.




(U.S.A.)



(Canada)


Brake system warning light

Stop the vehicle immediately.




Charging system warning light

Have the vehicle inspected immediately.




(U.S.A.)




(Canada)


Malfuction indicator lamp



SRS warning light




(U.S.A.)




(Canada)

ABS warning light



Electric power steering system warning light



(Blinking and then continuously on)

Tire pressure warning light




(Comes on)

Slip indicator

Have the malfunction repaired immediately.



Open door warning light




(On the center panel)

Front passenger's seat belt reminder light



Low fuel level warning light




(Illuminates without blinking)

Tire pressure warning light^{*1}



(On the instrument cluster)

Driver's seat belt reminder light



Master warning light

For further information, refer to the Owner's Manual.

See the Owner's Manual



Turn signal indicator



Headlight high beam indicator



Headlight indicator (U.S.A.)



Tail light indicator (Canada)



ECT SNOW indicator^{*2}



ETCS SNOW indicator^{*3}



ECT PWR indicator^{*2}



Shift position and shift range indicators^{*2}



Cruise control indicator



Front fog light indicator



Intuitive parking assist indicator^{*4}



(Flashes)

Slip indicator



SRS airbag on-off indicator



VSC off indicator

For further information, refer to the Owner's Manual.

^{*1}: Turns on due to natural causes such as natural air leaks or tire inflation pressure changes caused by temperature including the spare tire. Adjust the tire inflation pressure to the specified level. The light will turn off after a few minutes. In case the light does not turn off even if the tire inflation pressure is adjusted, have the system checked by your Lexus dealer.

^{*2}: Vehicles with automatic transmission

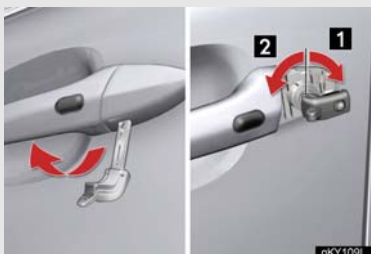
^{*3}: Vehicles with manual transmission

^{*4}: If equipped

What to do if ...

If the electronic key does not operate properly

Unlocking and locking the doors



To unlock or lock the vehicle, use the mechanical key to remove the lock cover on the driver's door handle. The mechanical key is stored inside the electronic key.

1 Unlocks

2 Locks

Starting the engine



1 Depress the brake pedal (for automatic transmission) or clutch pedal (for manual transmission).

2 Touch the Lexus emblem side of the electronic key to the "ENGINE START STOP" switch.

3 Press the "ENGINE START STOP" switch within 10 seconds of the buzzer, keeping the brake pedal (for automatic transmission) or clutch pedal (for manual transmission) depressed.

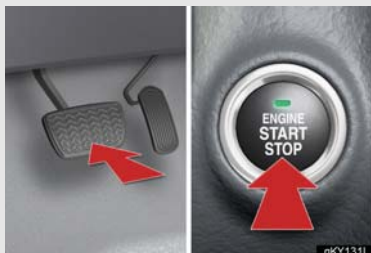


If the electronic key battery becomes depleted, replace it with a new battery. For instructions on replacing the battery, refer to the Owner's Manual. If you need further assistance, contact your Lexus dealer.

If the engine doesn't start

Make sure that the correct operating procedures have been followed.

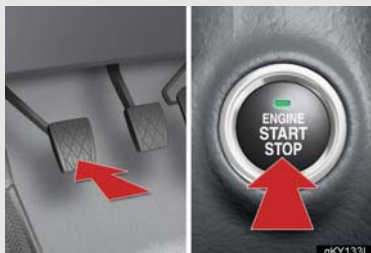
► Automatic transmission



Brake/clutch pedal

Make sure that the brake pedal (for automatic transmission) or clutch pedal (for manual transmission) is firmly depressed when attempting to start the engine. (→P.14)

► Manual transmission



Steering wheel lock

Make sure that the steering wheel lock is released.



To release the steering wheel lock, gently turn the wheel left or right while pressing the "ENGINE START STOP" switch. (→P.10)

If the engine still does not start, see the Owner's Manual for more information or contact your Lexus dealer.

Electronic Key Alarm

The electronic key alarm uses an alarm and warning messages to indicate that the electronic key has been used improperly. Take appropriate measure in response to any warning messages that are displayed. In some cases, an alarm may sound without an accompanying warning message. If so, follow the correction procedure in the table below.

Alarm	Situation	Correction procedure
Exterior alarm sounds once for 2 seconds	Tried to lock the doors using the entry function while the electronic key is still inside the passenger compartment	Retrieve the electronic key from the passenger compartment and lock the doors again.
	Closed the trunk while the electronic key is still inside and all doors are locked	Retrieve the electronic key from the trunk and close the trunk lid.
Exterior alarm sounds once for 60 seconds	Tried to exit the vehicle with the electronic key and lock the doors without first turning the "ENGINE START STOP" switch OFF	Turn the "ENGINE START STOP" switch OFF and lock the doors again.
Exterior alarm sounds once for 10 seconds	Tried to lock the vehicle using the entry function while a door is open	Close all of the doors and lock the doors again.
Interior alarm sounds continuously*	Tried to open the door and exit the vehicle without shifting the shift lever to P	Shift the shift lever to P.
Interior alarm pings continuously	Switched to ACCESSORY mode while the driver's door is open (Opened the driver's door when the "ENGINE START STOP" switch is in ACCESSORY mode.)	Close the driver's door.
	Turned the "ENGINE START STOP" switch OFF while the driver's door is still open	Close the driver's door.

*: Vehicles with automatic transmission only