

## Engine (ignition) Switch

With the electronic key on your person, the engine can be started by simply pressing the "ENGINE START STOP" switch, while depressing the brake pedal or clutch pedal.  
(The mechanical key cannot be used to start the engine.)

### Starting the engine



#### ► Automatic transmission

Make sure the parking brake is engaged and the shift lever is in P.

- 1 Depress the brake pedal.  
The "ENGINE START STOP" switch indicator light turns green.
- 2 Press the "ENGINE START STOP" switch.



#### ► Manual transmission

Make sure the parking brake is engaged and the shift lever is in N.

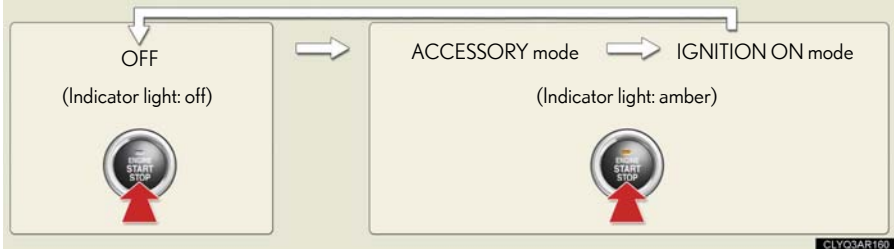
- 1 Depress the clutch pedal.  
The "ENGINE START STOP" switch indicator light turns green.
- 2 Press the "ENGINE START STOP" switch.

### Stopping the engine

- 1 Engage the parking brake and shift the shift lever to P (for automatic transmission) or N (for manual transmission).
- 2 Press the "ENGINE START STOP" switch.

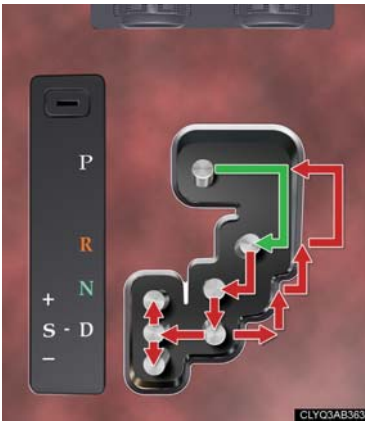
## ■ Changing power modes

To change power modes without turning on the engine, press the “ENGINE START STOP” switch without depressing the brake pedal (for automatic transmission) or the clutch pedal (for manual transmission). The modes can be changed in the following order:



## Automatic Transmission (If Equipped)

### ■ Shift positions



- P Park
- R Reverse
- N Neutral (drive not engaged)
- D Drive
- S S mode

← The vehicle can only be shifted out of P when the “ENGINE START STOP” switch is in IGNITION ON mode and the brake pedal is depressed.

## ■ Changing shift ranges in the D position

Operating the shift paddle switches allows shift ranges to be selected to suit the driving conditions.



- 1 Pull the “-” shift paddle switch toward you.  
The indicator in the meter cluster will display the selected shift range.

- 2 **Higher shift range:**  
Pull the “+” shift paddle switch toward you.  
**Lower shift range:**  
Pull the “-” shift paddle switch toward you.



Pulling and holding the “+” shift paddle switch for a certain period of time allows you to return to normal D position driving. If the accelerator pedal is depressed for more than a certain period of time in one range, shift range selection in the D position will be automatically deactivated.

## ■ Changing shift ranges in the S position

Operating the shift lever or shift paddle switches allows shift ranges to be selected to suit the driving conditions.



- 1 Shift the shift lever to S.

The indicator in the meter cluster will display the selected shift range.



- 2 **Higher shift range:**

Move the shift lever in the "+" direction, or pull the "+" shift paddle switch toward you.

**Lower shift range:**

Move the shift lever in the "-" direction, or pull the "-" shift paddle switch toward you.



## Manual Transmission (If Equipped)



To operate the shift lever, the clutch pedal must be fully depressed.

To shift into R, the ring on the shift lever must be pulled up.

Shift the shift lever to R only when the vehicle is stationary.

## Multi-information Display

The multi-information display shows information about your vehicle, including the items shown below.

### Display information



- Trip information
  - Outside temperature
  - Driving range
  - Average fuel consumption
  - Average fuel consumption after refueling
  - Current fuel consumption
  - Average vehicle speed
  - Gear position display (automatic transmission only)
- Satellite switch mode display
- Intuitive parking assist display (if equipped)
- Warning messages

### Changing the display of trip information



Trip information items can be switched by pressing the DISP switch.

- When using intuitive parking assist, the appropriate display is shown on the screen.
- In the event that a problem is detected in any of the vehicle's systems, a warning message is shown on the multi-information display.

## Satellite Switches

The satellite switches can be used to change the settings of various functions. Settings are shown on the multi-information display.



The satellite switches can be used to change the settings of the following items.

- Intuitive parking assist (if equipped)
- Tire pressure warning system initialization
- ID code selection for the tire pressure warning system
- Vehicle speed indicator
- Tacho indicator

### ■ Changing the ON/OFF settings



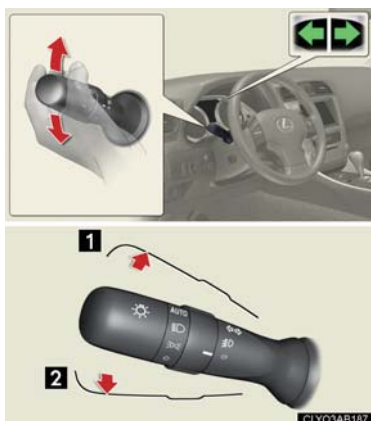
- 1 To cycle through the functions, press either the left or right selector switch.



- 2 To change the settings, press the ON/OFF button.

For detailed information of changing the settings, see the Owner's Manual.

## Turn Signal Lever



- 1 Right turn signal
- 2 Left turn signal

To signal a lane change, move the lever partway and hold.

## ECT Switch (Automatic Transmission)

Use the ECT switch to select the driving mode that best suits the driving and road conditions.



- 1 Power mode  
For more powerful acceleration and uphill driving.
- 2 Normal mode
- 3 Snow mode  
For starting or accelerating on snow-covered roads or other slippery surfaces.

An indicator comes on when in power or snow mode.

## ETCS Switch (Manual Transmission)

Use the ETCS switch to change to snow mode when starting or accelerating on snow-covered roads or other slippery surfaces.



An indicator comes on when in snow mode. Press again to return to normal mode.

## Intuitive Parking Assist (If Equipped)

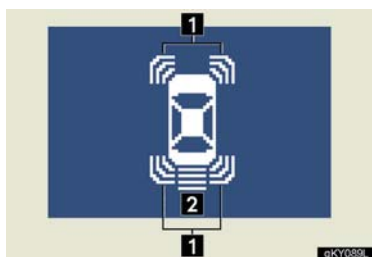
The system uses a screen display and buzzer to inform the driver of obstacles near the vehicle when parking or driving at low speed.

Owners of models equipped with a navigation system should refer to the "Navigation System Owner's Manual".

### Turning the system on and off

The system can be turned on and off using the satellite switch. (→P.19)

### Multi-information display



Sensors are used to detect obstacles near the vehicle. The distance to a detected obstacle is shown by the number of indicator bars.

- 1 Indicates obstacles detected by the corner sensors
- 2 Indicates obstacles detected by the back sensors



## Cruise Control

Cruise control allows the driver to maintain a constant speed without having to operate the accelerator pedal.

Use for highway driving or when traveling at a constant speed for long periods of time.



- 1 Indicator
- 2 Cruise control switch

### Setting the speed



- 1 Press the ON-OFF button.  
The system will turn on.
- 2 Accelerate or decelerate to the desired speed, and then push the lever down.  
This sets the speed in the cruise control memory.

### Canceling



- 1 To temporarily cancel the cruise control, pull the lever toward you. To resume the cruise control, push the lever up.
- 2 To turn the system off, press the ON-OFF button.

### Adjusting the speed setting



- To **increase speed**: push the lever up.
- To **decrease speed**: push the lever down.

Release the lever when the desired speed is reached.