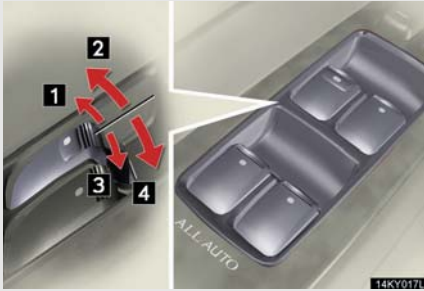


## 1-4. Opening and closing the windows and moon roof

### Power windows

The power windows can be opened and closed using the following switches.



- 1 Closing
- 2 One-touch closing\*
- 3 Opening
- 4 One-touch opening\*

\*: Pushing the switch in the opposite direction will stop window travel partway.

### Lock switch



Press the switch down to lock passenger window switches.

Use this switch to prevent children from accidentally opening or closing a passenger window.

#### n The power windows can be operated when

The "ENGINE START STOP" switch is in IGNITION ON mode.

#### n Door lock linked window operation

- 1 The power windows can be opened and closed using the mechanical key. (→P. 394)
- 1 The power windows can be opened using the wireless remote control. (→P. 34)

## n Operating the power windows after turning the “ENGINE START STOP” switch OFF

The power windows can be operated for approximately 45 seconds even after the “ENGINE START STOP” switch is switched to ACCESSORY mode or turned OFF. They cannot, however, be operated once either front door is opened.

## n Jam protection function

If an object becomes caught between the window and the window frame, window travel is stopped and the window is opened slightly.

## n When the battery is disconnected

The power windows must be initialized in order to ensure proper operation. (Perform for each window with the switch for each seat.)

**STEP 1** Open the window halfway.

**STEP 2** Fully close the window by pulling the switch up and continue holding the switch for one second.

The indicator on the switch changes from a flashing pattern to being on when initial settings are complete.

## n Customization that can be configured at Lexus dealer

Settings (e.g. linked door lock operation) can be changed. (Customizable features →P. 436)

## CAUTION

## n Closing the windows

Observe the following precautions.

Failing to do so may result in death or serious injury.

**1** Check to make sure that all passengers do not have any part of their body in a position where it could be caught when a window is being operated.

**1** Do not allow children to operate the power windows.

Closing a power window on someone can cause serious injury, and in some instances, even death.

## n Jam protection function

**1** Never try jamming any part of your body to activate the jam protection function intentionally.

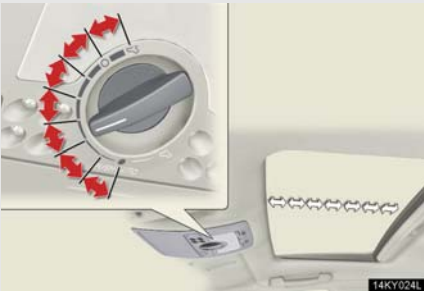
**1** The jam protection function may not work if something gets caught just before the window fully closes.


1-4. Opening and closing the windows and moon roof


**Moon roof (if equipped)**

Use the overhead switches to open, close, and tilt the moon roof up and down.

**n Manually opening and closing**

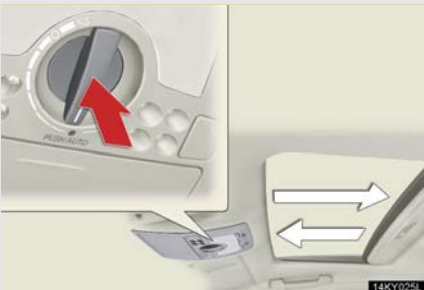


 Fully open

 Fully close

The moon roof can be opened in 7 steps by changing the position of the switch.

**n One-touch open and close**

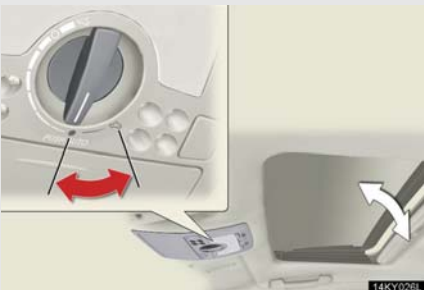


Open to step 6

While the moon roof is opening, pushing the switch will stop the moon roof operation partway. Any further opening must be performed manually, using the switch.

After the operation stops, press the switch again to fully close the moon roof.

**n Tilt up and down**



 Tilt up

 Tilt down

Fully up/fully down.

### n The moon roof can be operated when

The "ENGINE START STOP" switch is in IGNITION ON mode.

### n Door lock linked moon roof operation

1 The moon roof can be opened and closed using the mechanical key. (→P. 394)

1 The moon roof can be opened using the wireless remote control. (→P. 34)


### n Operating the moon roof after turning the "ENGINE START STOP" switch OFF

The moon roof can be operated for approximately 45 seconds even after the "ENGINE START STOP" switch is switched to ACCESSORY mode or turned OFF. It cannot, however, be operated once either front door is opened.

### n Jam protection function

If an object is detected between the moon roof and the frame while closing or tilting down, travel is stopped and the moon roof opens slightly.

### n If the moon roof can not be closed

Pressing the switch of at  for more than 10 seconds closes the moon roof.

### n To reduce moon roof wind noise

1 Drive with the moon roof switch in  when you open and close the moon roof manually.

1 Drive with the moon roof where it has stopped when opening automatically.

### n Sunshade

The sunshade can be opened and closed manually. However, the sunshade will open automatically when the moon roof is opened.

### n Customization that can be configured at Lexus dealer

Settings (e.g. linked door lock operation) can be changed. (Customizable features →P. 436)

### CAUTION

#### **n Opening the moon roof**

Observe the following precautions.

Failing to do so may cause death or serious injury.

**1** Do not allow any passengers to put their hands or heads outside the vehicle while it is moving.

**1** Do not sit on top of the moon roof.

#### **n Closing the moon roof**

Observe the following precautions.

Failing to do so may result in death or serious injury.

**1** Check to make sure that all passengers do not have any part of their bodies in a position where they could be caught when the moon roof is being operated.

**1** Do not allow children to operate the moon roof.

Closing the moon roof on someone can cause death or serious injury.

#### **n Jam protection function**

**1** Never try jamming any part of your body to activate the jam protection function intentionally.

**1** The jam protection function may not work if something gets caught just before the moon roof fully closes.