

2-2. Instrument cluster

Gauges and meters



The units used on the speedometer and the tachometer gauge display may differ depending on the model/type.

The following gauges, meters and display illuminate when the engine switch is in IG-ON mode.

1 Speedometer

Displays the vehicle speed.

2 Multi-information display

→P. 118

3 Tachometer

Displays the engine speed in revolutions per minute.

4 Tacho indicator

When the set engine speed is reached while driving, this ring-shaped indicator comes on in yellow. The indicator comes on in red when the engine speed reaches a dangerous range.

5 Engine coolant temperature gauge

Displays the engine coolant temperature.

6 Odometer and trip meter

1 Odometer

Displays the total distance the vehicle has been driven.

1 Trip meter

Displays the distance the vehicle has been driven since the meter was last reset. Trip meters A and B can be used to record and display different distances independently.

7 Speed indicator

When the set speed is reached while driving, this ring-shaped indicator comes on in yellow. The indicator comes on in red when the vehicle speed reaches the dangerous range.

8 Fuel gauge

Displays the quantity of fuel remaining in the tank.

9 Odometer/trip meter and trip meter reset button

Switches between odometer and trip meter displays. Pushing and holding the button will reset the trip meter when the trip meter is being displayed.

Instrument panel light control

The brightness of the instrument panel lights can be adjusted.



1 Darker

2 Brighter

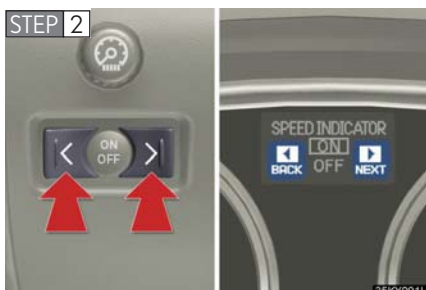
Speed and tacho indicators

n Turning the indicator ON/OFF



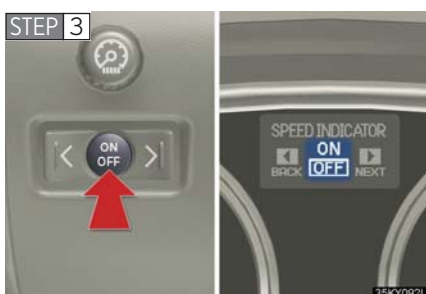
Bring up the satellite switch mode on the multi-information display.

Press the < switch, > switch, or the ON/OFF button.



Select the item whose setting is to be changed.

Press < or > switch to display the item whose setting is to be changed.



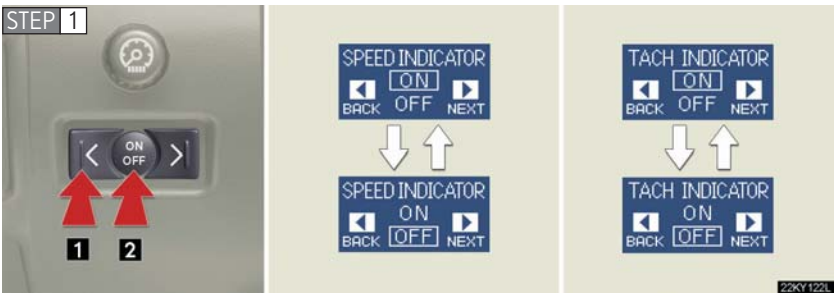
Change the settings.

Press ON/OFF button to change the settings (e.g. ON/OFF).

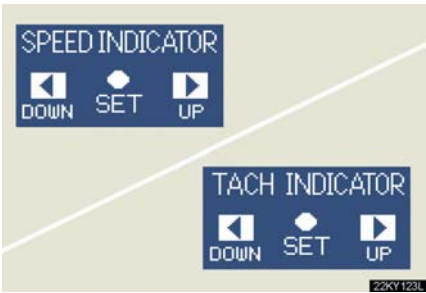
n Changing the indicator setting

The satellite switch can be used to change the set speed at which the yellow speed or tacho indicator ring comes on.

The setting can be made only when the engine switch is in IG-ON mode and the vehicle is stopped.



Push the < or > switch to select the speed or tacho indicator set mode. (1) Turn the speed or tacho indicator to OFF and then ON by pushing the ON/OFF button. (2)



After one second, the mode enters the indicator setting mode.

The speedometer or tachometer needle moves to the previously set speed.



Push the < or > switch within 6 seconds of the speedometer or tachometer needle moving to change the setting of the desired speed, then turn the indicator mode to ON by pushing the ON/OFF button.

Pushing and holding the switch changes values at a faster rate.

If the satellite switch is not operated for some time, the multi-information display returns to its previously displayed content.



The yellow indicator is displayed to indicate that the desired speed has been set.

n **Speed indicator display conditions and vehicle speed setting range**

Vehicle speed setting range: Approximately 30 to 100 mph
(approximately 50 to 160 km/h)

When the maximum speed is selected, the speed indicator comes on only in red.

n **Tacho indicator display conditions and engine speed setting range**

Engine rpm setting range: Approximately 2000 to 6500 rpm (r/min)

When the maximum rpms is selected, the tacho indicator comes on only in red.

NOTICE

n To prevent damage to the engine and its components

- i** Do not let the indicator needle of the tachometer enter the red zone, which indicates the maximum engine speed.
- i** The engine may be overheating if the temperature gauge is in the red zone (H). In this case, immediately stop the vehicle in a safe place. Check the engine after it has cooled completely. (→P. 375)

2-2. Instrument cluster

Indicators and warning lights

The indicator and warning lights on the instrument cluster and center panel inform the driver of the status of the vehicle's various systems.



► Instrument cluster

The units used on the speedometer and the tachometer gauge display may differ depending on the model/type.



► Center panel

n Indicators

The indicators inform the driver of the operating state of the vehicle's various systems.



Turn signal indicator
(→P. 107)



Headlight high beam indicator (→P. 122)



(U.S.A.)

Headlight indicator
(→P. 122)



(CANADA)

Tail light indicator
(→P. 122)



Front fog light indicator
(→P. 125)



(vehicles with an automatic transmission)
Shift position and shift range indicators (→P. 101)



(vehicles with an automatic transmission)

ECT SNOW indicator
(→P. 102)



(vehicles with a manual transmission)

ETCS SNOW indicator
(→P. 105)



(vehicles with an automatic transmission)

ECT PWR indicator
(→P. 102)



Cruise control indicator
(→P. 130)



(if equipped)

AFS OFF indicator light
(→P. 123)



(if equipped)

Lexus parking assist-sensor indicator (→P. 142)



Slip indicator (→P. 149)



VSC OFF indicator
(→P. 150)



SRS airbag on-off indicator (→P. 72)

n Warning lights

Warning lights inform the driver of malfunctions in any of the vehicle's systems. (→P. 339)



*: These lights turn on when the engine switch is turned to IG-ON mode to indicate that a system check is being performed. They will turn off after the engine is started, or after a few seconds. There may be a malfunction in a system if a light does not come on, or if the lights do not turn off. Have the vehicle inspected by your Lexus dealer.

! CAUTION

n If a safety system warning light does not come on

Should a safety system light such as ABS and the SRS airbag warning light not come on when you start the engine, this could mean that these systems are not available to help protect you in an accident, which could result in death or serious injury. Have the vehicle inspected by your Lexus dealer immediately if this occurs.

Multi-information display

The multi-information display presents the driver with a variety of driving-related data, including the current outside air temperature.



1 Trip information (→P. 119)

Displays driving range, fuel consumption and other cruising related information.

1 Satellite switch mode display (→P. 222)

This switch is used to configure various function settings.

1 Lexus parking assist-sensor display (if equipped)

Automatically displayed when using Lexus parking assist-sensor.

1 Dynamic radar cruise control display (if equipped) (→P. 133)

Automatically displayed when using dynamic radar cruise control.

1 Warning messages (→P. 344)

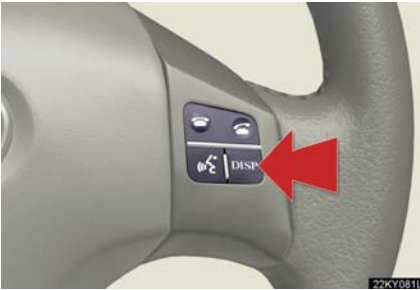
Automatically displayed when a malfunction occurs in one of the vehicle's systems.

Trip information



Display items can be switched by pushing the DISP switch.

► Without navigation system



► With navigation system

n Outside temperature



Displays the outside air temperature.

The temperature range that can be displayed is from -40°F (40°C) to 122°F (50°C).

When the temperature drops to 37°F (3°C), the digits of the display will flash for 10 seconds.

n Driving range



Displays the estimated maximum distance that can be driven with the quantity of fuel remaining.

This distance is computed based on your average fuel consumption. As a result, the actual distance that can be driven may differ from that displayed.

n Average fuel consumption



Displays the average fuel consumption since the function was reset.

The function can be reset by pushing the DISP switch for longer than one second when the average fuel consumption is displayed.

n Average fuel consumption after refueling



Displays the average fuel consumption since the vehicle was last refueled.

n Current fuel consumption



Displays the current rate of fuel consumption.

n Average vehicle speed



Displays the average vehicle speed since the engine was started or the function was reset.

The function can be reset by pushing the DISP switch for longer than one second when the average vehicle speed is displayed.

n Gear position display (vehicles with an automatic transmission only)



Indicates the current gear, and the range of gears that is available when the shift lever is in the S or D position. the gear range is shown by the number of dots (●) and the current gear is shown as a number. The transmission automatically selects the gears within the driver selected gear range.

In the illustration to the left, a range of 6 available gears (1 through 6) has been selected by the driver. (The shift lever is in the D or S position with 6 ranges enabled) It is possible for the transmission to automatically select between all 6 of the gears. In this case, the transmission has selected third gear.

2

When driving

n System check display

After switching the engine switch to IG-ON mode, CHECK is displayed while system operation is checked. When the system check is complete, COMPLETED is displayed before returning to the normal screen.

! CAUTION

n The information display at low temperatures

Allow the interior of the vehicle to warm up before using the liquid crystal information display. At extremely low temperatures, the information display monitor may respond slowly, and display changes may be delayed.

For example, there is a lag between the driver's shifting and the new gear number appearing on the display. This lag could cause the driver to downshift again, causing rapid and excessive engine braking and possibly an accident resulting in personal death or injury.