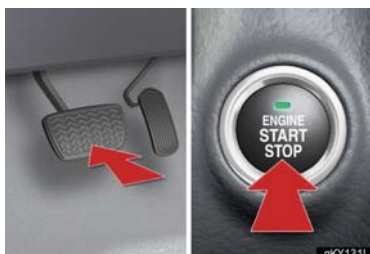


Starting

With the electronic key on your person, the engine can be started by simply pressing the engine switch, while depressing the brake pedal or clutch pedal.
(The mechanical key cannot be used to start the engine.)

Starting the engine



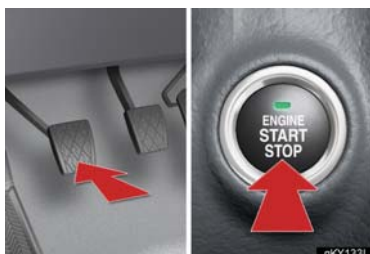
► Automatic transmission

Make sure the parking brake is engaged and the shift lever is in P.

① Depress the brake pedal.

The engine switch indicator light turns green.

② Press the engine switch.



► Manual transmission

Make sure the parking brake is engaged and the shift lever is in N.

① Depress the clutch pedal.

The engine switch indicator light turns green.

② Press the engine switch.

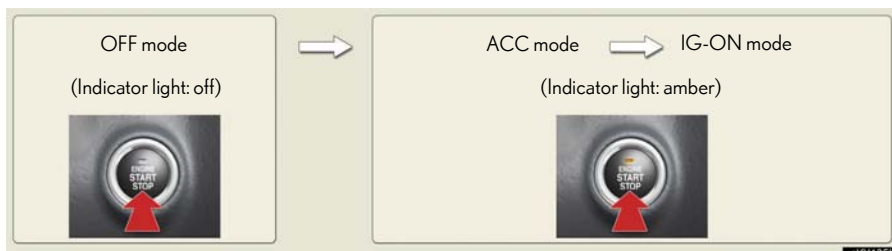
Stopping the engine

① Engage the parking brake and shift the shift lever to P (for automatic transmission) or N (for manual transmission).

② Press the engine switch.

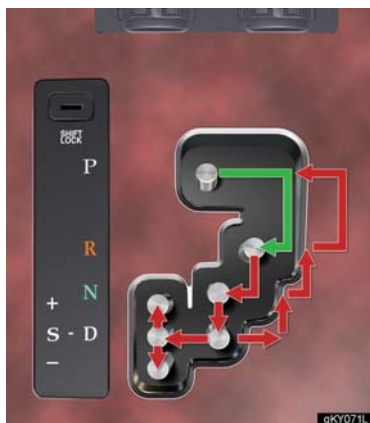
Changing power modes

To change power modes without turning on the engine, press the engine switch without depressing the brake pedal (for automatic transmission) or the clutch pedal (for manual transmission). The modes can be changed in the following order:



Automatic Transmission

Shift positions



- P Park
- R Reverse
- N Neutral (drive not engaged)
- D Drive
- S S mode

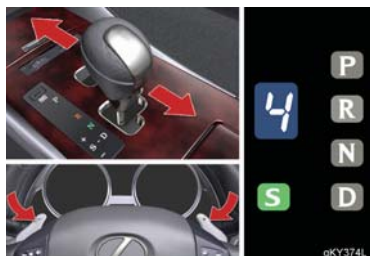
← The vehicle can only be shifted out of P when the engine switch is in IG-ON mode and the brake pedal is depressed.

S mode

S mode allows the driver to select the shift range manually based on driving conditions.



1 Shift the shift lever to S.



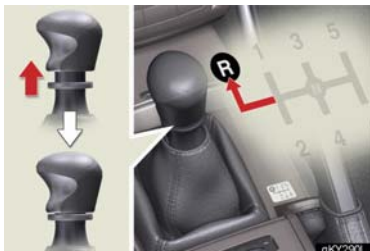
2 To upshift: shift the shift lever toward "+", or pull the "+" shift paddle switch on the steering wheel toward the driver.

To downshift: shift the shift lever toward "-", or pull the "-" shift paddle switch on the steering wheel toward the driver.

The selected shift range is displayed on the instrument cluster.



Manual Transmission



To operate the shift lever, the clutch pedal must be fully depressed.

To shift into R, the ring on the shift lever must be pulled up.

Parking Brake

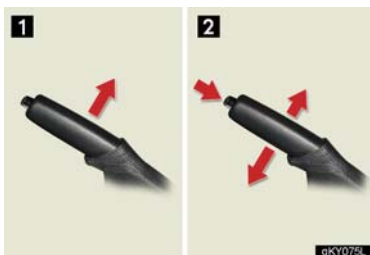
Automatic transmission



To set the parking brake: firmly depress the parking brake pedal.

To release the parking brake: depress the parking brake pedal again.

Manual transmission



1 To set the parking brake: pull the parking brake lever firmly upward.

2 To release the parking brake: press and hold the lock release button and lift the lever slightly before lowering it as far as it will go.

Multi-information Display

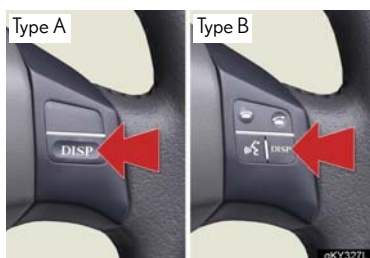
The multi-information display shows information about your vehicle, including the items shown below.

■ Display information



- Trip information
 - Outside temperature
 - Driving range
 - Average fuel consumption
 - Average fuel consumption after refueling
 - Current fuel consumption
 - Average vehicle speed
 - Gear position (automatic transmission only)
- Satellite switch mode
- Dynamic radar cruise control settings (if equipped)
- Lexus parking assist-sensor information (if equipped)
- Warning messages

■ Changing the display of trip information



Trip information items can be switched by pressing the DISP switch.

- When using Lexus parking assist-sensor or dynamic radar cruise control, the appropriate display is shown on the screen.
- In the event that a problem is detected in any of the vehicle's systems, a warning message is shown on the multi-information display.

Satellite Switches

The satellite switches can be used to change the settings of various functions. Settings are shown on the multi-information display.



The satellite switches can be used to change the settings of the following items.

- Lexus parking assist-sensor (if equipped)
- Tire inflation pressure warning system initialization
- ID code selection for tire inflation pressure warning system
- AFS (Adaptive Front-lighting System) (if equipped)
- Speed indicator
- Tacho indicator

■ Changing the ON/OFF settings



- 1 To cycle through the functions, press either the left or right selector switch.



- 2 To change the settings, press the ON/OFF button.

For detailed information of changing the settings, see the Owner's Manual.

Turn Signal Lever



- 1 Right turn signal
- 2 Left turn signal

To signal a lane change, move the lever partway and hold.

Emergency Flasher Switch



Engaging the emergency flasher switch causes all the turn signal lights to flash. The emergency flashers can be operated even when the engine switch is OFF.

ECT Switch (Automatic Transmission)

Use the ECT switch to select the driving mode that best suits the driving and road conditions.



- 1 **Power mode**
For more powerful acceleration and uphill driving.
- 2 **Normal mode**
- 3 **Snow mode**
For starting or accelerating on snow-covered roads or other slippery surfaces.

An indicator comes on when in power or snow mode.

Entering and Exiting

Before Driving

When Driving

Rain and Night Driving

Driving Comfort

Opening and Closing

What to do if ...

Customizing Your Lexus

ETCS Switch (Manual Transmission)

Use the ETCS switch to change to snow mode when starting or accelerating on snow-covered roads or other slippery surfaces.



An indicator comes on when in snow mode. Press again to return to normal mode.

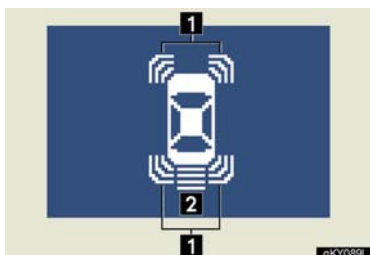
Lexus Parking Assist-sensor (If Equipped)

The system uses a screen display and buzzer to inform the driver of obstacles near the vehicle when parking or driving at low speed.

Turning the system on and off

The system can be turned on and off using the satellite switch. (→P.21)

Screen display



Sensors are used to detect obstacles near the vehicle. The distance to a detected obstacle is shown by the number of indicator bars.

- 1 Indicates obstacles detected by the corner sensors
- 2 Indicates obstacles detected by the back sensors

Cruise Control (If Equipped)

Cruise control allows the driver to maintain a constant speed without having to operate the accelerator pedal.

Use for highway driving or when traveling at a constant speed for long periods of time.

■ Setting the speed



- 1 Press the ON-OFF button.
The system will turn on.
- 2 Accelerate or decelerate to the desired speed, and then push the lever down.
This sets the speed in the cruise control memory.

■ Canceling



- 1 To temporarily cancel the cruise control, pull the lever toward you. To resume the cruise control, push the lever up.
- 2 To turn the system off, press the ON-OFF button.

■ Adjusting the speed setting



- To increase speed:** push the lever up.
To decrease speed: push the lever down.

Release the lever when the desired speed is reached.

Dynamic Radar Cruise Control (If Equipped)

Dynamic radar cruise control supplements conventional cruise control with a vehicle-to-vehicle distance control mode.

■ Cruise control display



Cruise control settings are shown on the multi-information display.

- 1 Vehicle ahead indicator
- 2 Vehicle-to-vehicle distance
- 3 Preset speed

■ Vehicle-to-vehicle distance control mode



- 1 Press the ON-OFF button.
 - 2 Accelerate or decelerate to the desired speed, and then push the lever down.
- Vehicle-to-vehicle distance can be adjusted using the distance switch.

■ Constant speed control mode



- 1 Press the ON-OFF button.
- 2 Push the lever forward and hold for at least one second.
- 3 Accelerate or decelerate to the desired speed, and then push the lever down.

■ Canceling



- 1 To temporarily cancel the dynamic radar cruise control, pull the lever toward you. To resume the cruise control, push the lever up.
- 2 To turn the system off, press the ON-OFF button.

■ Adjusting the speed setting



To increase speed: push the lever up.

To decrease speed: push the lever down.

Release the lever when the desired speed is reached.

The vehicle-to-vehicle distance control mode maintains the preset cruising speed as long as no vehicle is detected ahead.